

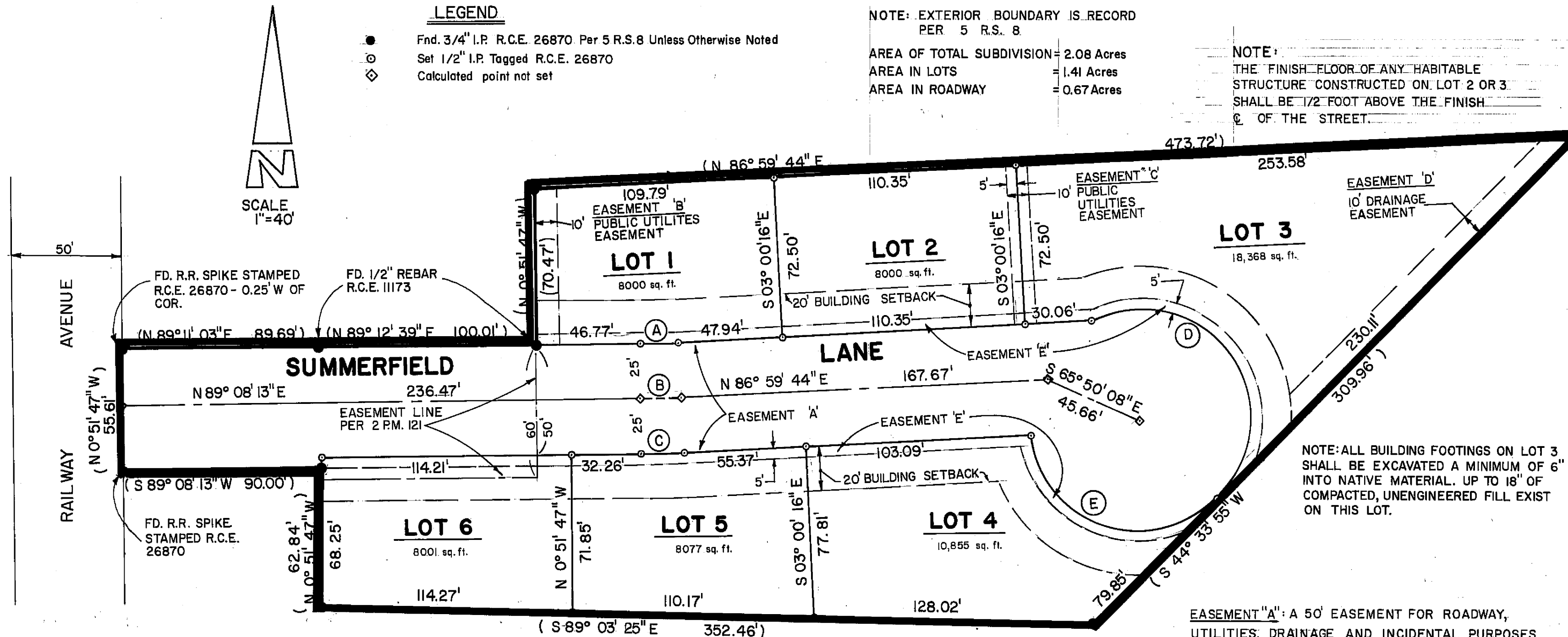
**LEGEND**

- Fnd. 3/4" I.P. R.C.E. 26870 Per 5 R.S.8 Unless Otherwise Noted
- Set 1/2" I.P. Tagged R.C.E. 26870
- ◇ Calculated point not set

NOTE: EXTERIOR BOUNDARY IS RECORD PER 5 R.S. 8

AREA OF TOTAL SUBDIVISION = 2.08 Acres  
 AREA IN LOTS = 1.41 Acres  
 AREA IN ROADWAY = 0.67 Acres

NOTE: THE FINISH FLOOR OF ANY HABITABLE STRUCTURE CONSTRUCTED ON LOT 2 OR 3 SHALL BE 1/2 FOOT ABOVE THE FINISH OF THE STREET.



NOTE: ALL BUILDING FOOTINGS ON LOT 3 SHALL BE EXCAVATED A MINIMUM OF 6" INTO NATIVE MATERIAL. UP TO 18" OF COMPACTED, UNENGINEERED FILL EXIST ON THIS LOT.

EASEMENT "A": A 50' EASEMENT FOR ROADWAY, UTILITIES, DRAINAGE AND INCIDENTAL PURPOSES TO BE DEDICATED TO THE COUNTY OF PLUMAS.

EASEMENT "E": A 5' SNOW REMOVAL AND PUBLIC UTILITIES EASEMENT TO BE DEDICATED TO THE COUNTY OF PLUMAS.

**COUNTY CLERK'S CERTIFICATE**

I, RAYNELLE SLATEN, CLERK OF THE COUNTY OF PLUMAS, STATE OF CALIFORNIA, AND EX-OFFICIO CLERK OF THE BOARD OF SUPERVISORS OF SAID COUNTY, HEREBY CERTIFY THAT THE HEREIN EMBODIED MAP WAS APPROVED BY THE SAID BOARD OF SUPERVISORS CONVENED IN REGULAR MEETING UPON THE 6<sup>th</sup> DAY OF March, 1979 AND THE EASEMENTS AS SHOWN ON THE MAP WERE ACCEPTED FOR THE USES NOTED.

*Raynelle Slaten*  
 RAYNELLE SLATEN

**COUNTY SURVEYOR'S CERTIFICATE**

THIS MAP CONFORMS WITH THE REQUIREMENTS OF THE SUBDIVISION MAP ACT AND LOCAL ORDINANCE.

3-5-79 DATED *Laurence J. Brock*  
 PLUMAS COUNTY SURVEYOR

**COUNTY TAX COLLECTOR'S CERTIFICATE**

I, TAX COLLECTOR OF THE COUNTY OF PLUMAS, STATE OF CALIFORNIA, DO HEREBY CERTIFY THAT THERE ARE NO TAX LIENS AGAINST THE PARCELS, AS SHOWN HEREON, FOR UNPAID COUNTY, MUNICIPAL, OR LOCAL TAXES OR SPECIAL ASSESSMENTS COLLECTED AS TAXES, EXCEPT TAXES OR ASSESSMENTS NOT YET PAYABLE. TAXES OR ASSESSMENTS WHICH ARE A LIEN BUT NOT YET PAYABLE ARE ESTIMATED TO BE IN THE AMOUNT OF \$1940.<sup>00</sup>

*Lois Alexander*  
 LOIS ALEXANDER  
 PLUMAS COUNTY TAX COLLECTOR

**COUNTY RECORDER'S CERTIFICATE**

FILED THIS 16<sup>th</sup> DAY OF March, 1979, AT 12:15 P.M. IN BOOK 4 OF MAPS AT PAGE 130, AT THE REQUEST OF THE COUNTY ENGINEER.

RAYNELLE SLATEN  
 COUNTY RECORDER

FEE \$5.00  
 FILE NO. 7078

BY *James Nicol*  
 DEPUTY

**CERTIFICATE OF BENEFICIARY**

FINANCIAL SAVINGS AND LOAN ASSOCIATION OF SAN FRANCISCO, A CALIFORNIA CORPORATION, AS BENEFICIARY UNDER THAT CERTAIN DEED OF TRUST, RECORDED SEPTEMBER 15, 1978 IN BOOK 295 OF OFFICIAL RECORDS, AT PAGE 298, AND FURTHER ADVANCE, RECORDED DECEMBER 19, 1978, IN BOOK 300 OF OFFICIAL RECORDS, AT PAGE 488, HEREBY CONSENTS TO THE PREPARATION AND RECORDATION OF THIS SUBDIVISION MAP.

FINANCIAL SAVINGS AND LOAN ASSOCIATION OF SAN FRANCISCO, A CALIFORNIA CORPORATION, BENEFICIARY

BY *Marlo J. Montgomery*  
 MARLO J. MONTGOMERY, VICE PRESIDENT  
 STATE OF CALIFORNIA )  
 COUNTY OF YUBA ) SS

ON THIS 24<sup>th</sup> DAY OF JANUARY, 1979, BEFORE ME, CAROL L. MURISSET, A NOTARY PUBLIC, IN AND FOR SAID STATE, PERSONALLY APPEARED MARLO J. MONTGOMERY, KNOWN TO ME TO BE THE VICE PRESIDENT OF THE CORPORATION THAT EXECUTED THE WITHIN INSTRUMENT, AND ALSO KNOWN TO ME TO BE THE PERSON WHO EXECUTED IT ON BEHALF OF SUCH CORPORATION, AND ACKNOWLEDGED TO ME THAT SUCH CORPORATION EXECUTED THE WITHIN INSTRUMENT PURSUANT TO ITS BY-LAWS OR A RESOLUTION OF ITS BOARD OF DIRECTORS.

DATED JAN 24, 1979

*Carol L. Muriset*  
 NOTARY PUBLIC  
 OFFICIAL SEAL  
 CAROL L. MURISSET  
 NOTARY PUBLIC - CALIFORNIA  
 Principal Office in YUBA County  
 My Commission Expires Mar. 23, 1982

March 23, 1982  
 MY COMMISSION EXPIRES

STATE OF CALIFORNIA )  
 COUNTY OF PLUMAS ) SS

ON THIS 15<sup>th</sup> DAY OF Feb, 1979, BEFORE ME, ELIZABETH A. CAMMACK, A NOTARY PUBLIC, IN AND FOR SAID COUNTY AND STATE, PERSONALLY APPEARED MICHAEL WEBB, KNOWN TO ME TO BE THE PERSON WHO EXECUTED THE WITHIN INSTRUMENT AND ACKNOWLEDGED TO ME THAT HE EXECUTED THE SAME.

11-28-80  
 MY COMMISSION EXPIRES

*Elizabeth A. Cammack*  
 NOTARY PUBLIC

STATE OF CALIFORNIA )  
 COUNTY OF PLUMAS ) SS

ON THIS 2<sup>nd</sup> DAY OF JAN, 1979, BEFORE ME, ELIZABETH A. CAMMACK, A NOTARY PUBLIC IN AND FOR SAID COUNTY AND STATE, PERSONALLY APPEARED FERN W. SEEVER AND FERN W. HORN, KNOWN TO ME TO BE THE PERSONS WHO EXECUTED THE WITHIN INSTRUMENT AND ACKNOWLEDGED TO ME THAT THEY EXECUTED THE SAME.

11-28-80  
 MY COMMISSION EXPIRES

*Elizabeth A. Cammack*  
 NOTARY PUBLIC  
*Michael Webb*  
 MICHAEL WEBB

2-15-79  
 DATED

**ENGINEER'S CERTIFICATE**

THIS MAP WAS PREPARED BY ME OR UNDER MY DIRECTION AND IS BASED UPON A FIELD SURVEY IN CONFORMANCE WITH THE REQUIREMENTS OF THE SUBDIVISION MAP ACT AT THE REQUEST OF FERN W. SEEVER IN NOVEMBER, 1977. I HEREBY STATE THAT THE SUBDIVISION MAP PROCEDURES OF THE LOCAL AGENCY HAVE BEEN COMPLIED WITH AND THAT THIS SUBDIVISION MAP CONFORMS TO THE APPROVED TENTATIVE MAP AND THE CONDITIONS OF APPROVAL THEREOF WHICH WERE REQUIRED TO BE FULFILLED PRIOR TO THE FILING OF THE SUBDIVISION MAP. THE SURVEY IS TRUE AND COMPLETE AS SHOWN, THAT THE MONUMENTS SHOWN THEREON EXIST AND ARE OF THE CHARACTER AND OCCUPY THE POSITIONS INDICATED, AND ARE SUFFICIENT TO ENABLE THE SURVEY TO BE RETRACED.

*Joseph G. Brandt*  
 JOSEPH G. BRANDT R.C.E. 26870

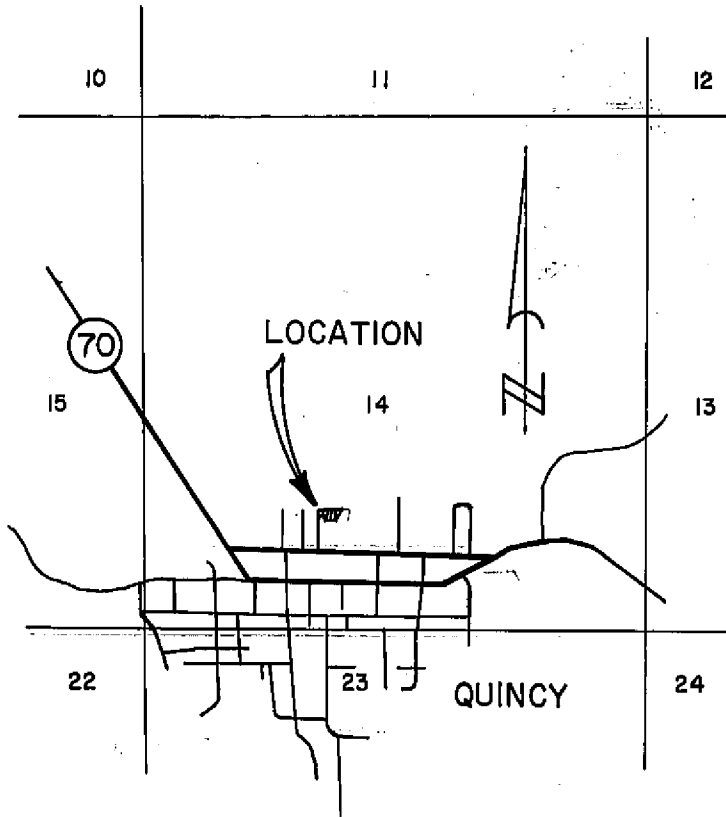
**OWNER'S CERTIFICATE**

WE HEREBY CERTIFY THAT WE ARE THE OWNERS OF THE LAND SHOWN ON THIS SUBDIVISION MAP AND CONSENT TO PREPARATION AND RECORDING OF THIS MAP, AND THAT WE ARE THE ONLY PERSONS WHOSE CONSENT IS REQUIRED TO PASS TITLE TO SAID LANDS. THE EASEMENTS SHOWN ON THIS MAP, TO BE CREATED, BY RECORDATION THEREOF, ARE CREATED WITH OUR CONSENT AND ARE HEREBY DEDICATED OR DECLARED. THESE EASEMENTS TO BE FOR PUBLIC USE AS INDICATED. EASEMENTS FOR PUBLIC UTILITIES, ROADS AND DRAINAGE FACILITIES ARE HEREBY DEDICATED FOR PUBLIC USE.

Jan 2<sup>nd</sup> 1979 *Fern W. Seever*  
 DATED FERN W. SEEVER  
 Jan 2-1 1979 *Fern W. Horn*  
 DATED FERN W. HORN

Curve Data

(A) Δ = 02° 08' 29"	(D) Δ = 161° 04' 43"
R = 475'	R = 50.00'
L = 17.75'	L = 140.57'
(B) Δ = 02° 08' 29"	(E) Δ = 127° 40' 09"
R = 500'	R = 50.00'
L = 18.68'	L = 111.41'
(C) Δ = 02° 08' 29"	
R = 525'	
L = 19.62'	



LOCATION MAP  
 T24N, R9E, MDM

SUMMERFIELD SUBDIVISION  
 A PORTION OF  
 THE S.W. 1/4 OF SEC. 14, T24N, R9E, MDM  
 WITHIN  
 PLUMAS COUNTY, CALIFORNIA  
 FOR  
 FERN W. SEEVER

**brandt & associates**  
 CIVIL ENGINEERS - SURVEYORS

75 COURT STREET  
 QUINCY, CALIFORNIA 95971  
 W.O. No. 770703

P.O. BOX 749  
 916-283-1111  
 DATE: NOV., 1978  
 SHEET 1 OF 1