

OWNER'S CERTIFICATE:

I HEREBY CERTIFY THAT I AM THE OWNER OF THE LAND SHOWN ON THIS MAP AND CONSENT TO PREPARATION AND RECORDING OF THIS MAP, AND THAT I AM THE ONLY PERSON WHOSE CONSENT IS REQUIRED TO PASS CLEAR TITLE TO SAID LANDS. THE EASEMENTS SHOWN ON THIS MAP TO BE CREATED BY RECORDATION THEREOF ARE CREATED WITH MY CONSENT AND ARE HEREBY DEDICATED OR DECLARED TO BE FOR PUBLIC OR PRIVATE USE AS INDICATED. EASEMENTS FOR PUBLIC UTILITIES, ROADS, AND DRAINAGE FACILITIES ARE HEREBY DEDICATED FOR PUBLIC USE.

Richard A. Clifford
RICHARD A. CLIFFORD, CO-TRUSTEE
William H. Finkbeiner
WILLIAM H. FINKBEINER, CO-TRUSTEE


STATE OF Washington
COUNTY OF King

ON THIS 12th DAY OF June, 1978, BEFORE ME Velta M. Strambog, A NOTARY PUBLIC IN AND FOR SAID COUNTY RESIDING THEREIN, DULY COMMISSIONED AND SWORN, PERSONALLY APPEARED RICHARD A. CLIFFORD & WILLIAM H. FINKBEINER, KNOWN TO ME TO BE THE PERSONS WHOSE NAMES ARE SIGNED TO THE WITHIN INSTRUMENT, AND ACKNOWLEDGED TO ME THAT THEY EXECUTED THE SAME. IN WITNESS WHEREOF I HAVE HEREUNTO SET MY HAND AND AFFIXED MY SEAL THE DAY AND YEAR IN THIS CERTIFICATE FIRST ABOVE WRITTEN.

Velta M. Strambog
NOTARY
MY COMMISSION EXPIRES 2/16/79

ENGINEER'S CERTIFICATE:

THIS MAP WAS PREPARED BY ME OR UNDER MY DIRECTION AND IS BASED UPON A FIELD SURVEY IN CONFORMANCE WITH THE REQUIREMENTS OF THE SUBDIVISION MAP ACT AT THE REQUEST OF WILLIAM H. FINKBEINER, IN JUNE, 1978. I HEREBY STATE THAT THIS MAP CONFORMS TO THE APPROVED TENTATIVE MAP AND THE CONDITIONS OF APPROVAL THEREOF. ALL MONUMENTS SHOWN AND DESCRIBED HEREON ARE IN PLACE AND ARE SUFFICIENT TO BE RETRACED.

Paul E. Simpson
PAUL E. SIMPSON, R.C.E. 18535


COUNTY SURVEYOR'S CERTIFICATE:

THIS MAP CONFORMS WITH THE REQUIREMENTS OF THE SUBDIVISION MAP ACT AND LOCAL ORDINANCE.

DATED: 8/1/78

Larry A. Fites
LARRY A. FITES, R.C.E. 13225
PLUMAS COUNTY ENGINEER

COUNTY TAX COLLECTOR'S CERTIFICATE:

I, TAX COLLECTOR OF THE COUNTY OF PLUMAS, STATE OF CALIFORNIA, DO HEREBY CERTIFY THAT THERE ARE NO TAX LIENS AGAINST THE LOTS AS SHOWN HEREON, FOR UNPAID COUNTY, MUNICIPAL, OR LOCAL TAXES OR SPECIAL ASSESSMENTS COLLECTED AS TAXES, EXCEPT TAXES OR ASSESSMENTS NOT YET PAYABLE. TAXES OR ASSESSMENTS WHICH ARE A LIEN BUT NOT YET PAYABLE, ARE ESTIMATED TO BE IN THE AMOUNT OF \$3545.00

Lois Alexander
LOIS ALEXANDER
PLUMAS COUNTY TAX COLLECTOR

COUNTY CLERK'S CERTIFICATE:

I, CLERK OF THE COUNTY OF PLUMAS, STATE OF CALIFORNIA, AND EX-OFFICIO CLERK OF THE BOARD OF SUPERVISORS OF SAID COUNTY, HEREBY CERTIFY THAT THE HEREIN EMBODIED MAP WAS APPROVED BY THE SAID BOARD OF SUPERVISORS CONVENED IN REGULAR MEETING UPON THE 18th DAY OF July, 1978, AND THE EASEMENTS AS SHOWN ON THE MAP WERE ACCEPTED FOR THE USES NOTED.

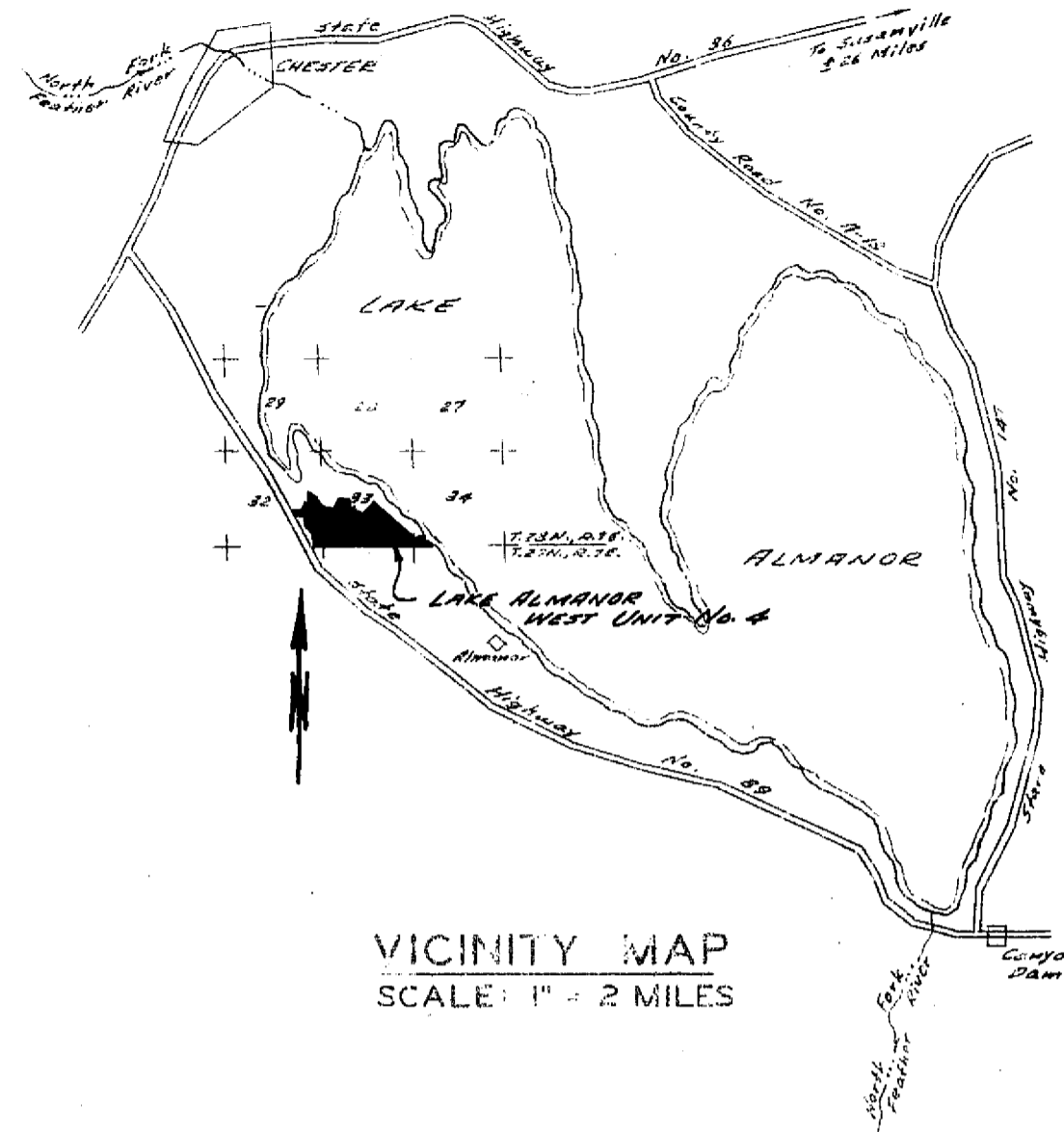
Raynelle Slaten
RAYNELLE SLATEN
PLUMAS COUNTY CLERK

COUNTY RECORDER'S CERTIFICATE:

FILED THIS 1st DAY OF August, 1978, AT 10:15 A.M. IN BOOK 4 OF Maps, AT PAGE 111-118, AT THE REQUEST OF The County Engineer

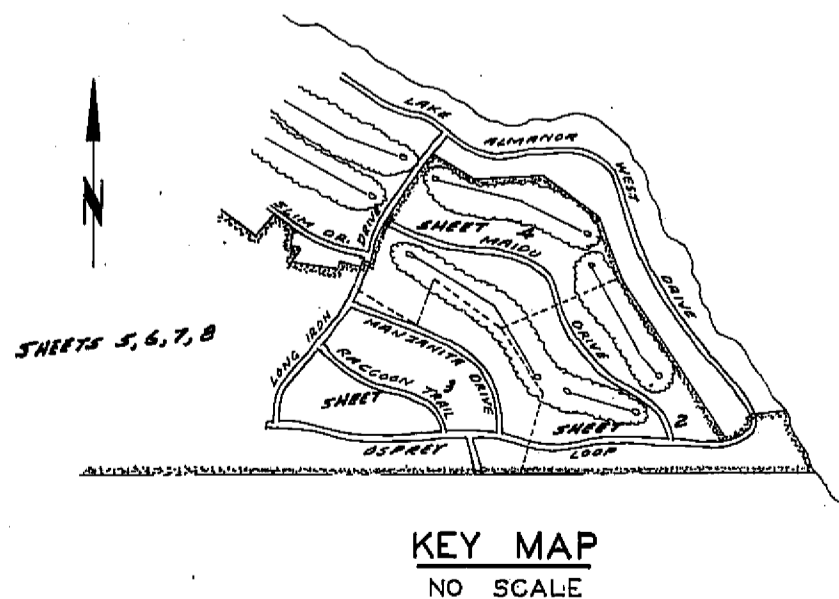
FEE: \$19.00
FILE NO. 819

RAYNELLE SLATEN
COUNTY RECORDER
BY Meredith Cotten
DEPUTY



NOTES:

- 1. THE BASIS OF BEARINGS IS THE MAP FILED FOR LAKE ALMANOR WEST UNIT NO. 3 IN MAP BOOK 4 AT PAGES 87-89.
- 2. SUBDIVISION ACREAGE:
LOTS = 250.20 AC.
AREAS = 32.96 AC.
ROADS = 15.60 AC.
TOTAL = 298.76 AC.
- 3. ALL SEPTIC TANK & LEACHFIELD SYSTEMS INSTALLED ON THESE LOTS SHALL BE IN CONFORMANCE WITH THE "GUIDELINES FOR WASTE DISPOSAL FROM LAND DEVELOPMENTS" ESTABLISHED BY THE CALIFORNIA REGIONAL WATER QUALITY CONTROL BOARD, CENTRAL VALLEY REGION.
- 4. A SOILS AND GEOLOGIC REPORT ON THIS SUBDIVISION WAS PREPARED IN OCTOBER, 1972 BY TOM CORDOVA, REGISTERED GEOLOGIST NO. 242.



LAKE ALMANOR WEST UNIT NO. 4
IN A PORTION OF SECTIONS 32, 33, 34, T.28N., R.7E., M.D.B. & M.
PLUMAS COUNTY, CALIFORNIA

SCALE: 1" = 100'

OWNER & SUBDIVIDER: RICHARD A. CLIFFORD, CO-TRUSTEE
WILLIAM H. FINKBEINER, CO-TRUSTEE
PAUL E. SIMPSON, & ASSOCIATES, ENGINEERING-PLANNING-SURVEYING
SUSANVILLE, CALIFORNIA