

GRAEAGLE MEADOWS UNIT NO. 4

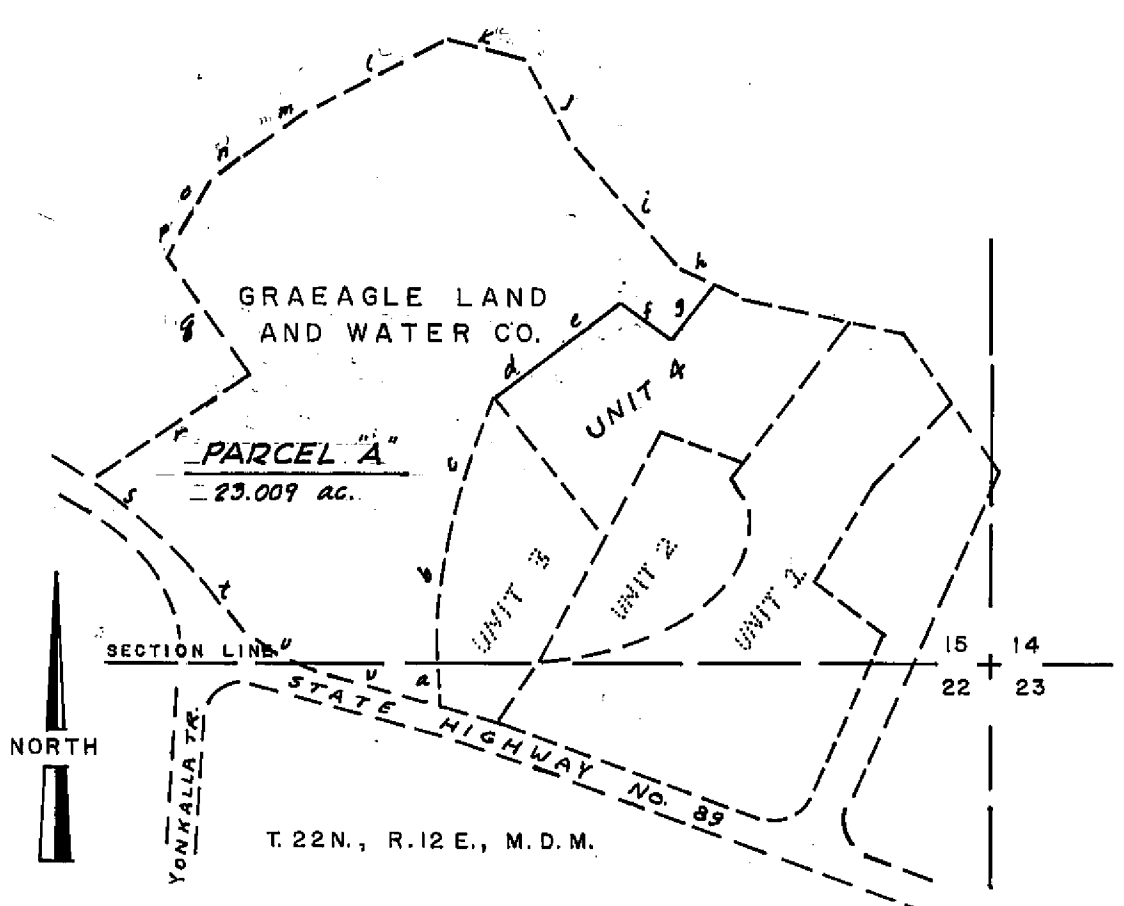
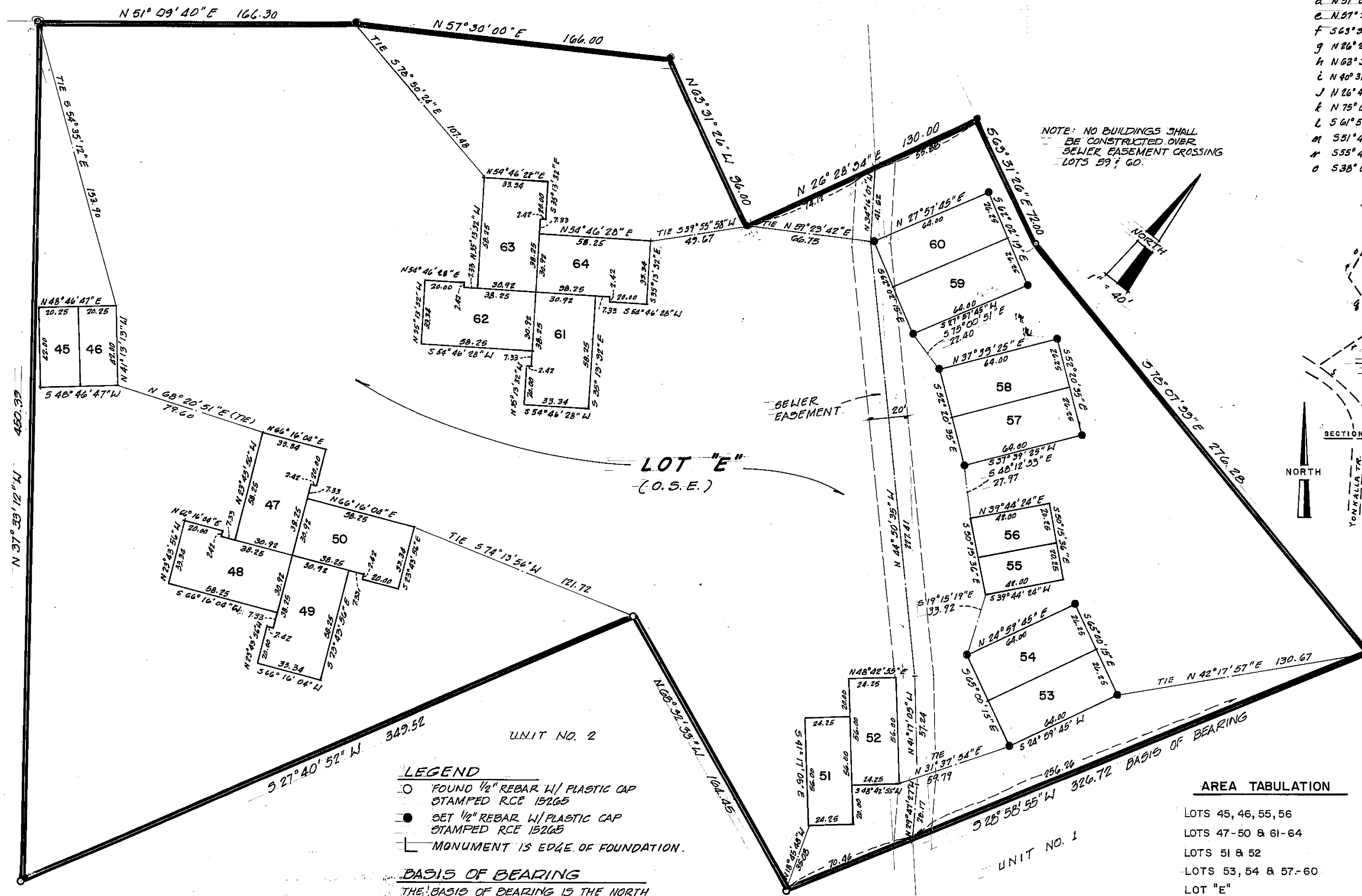
A PLANNED UNIT DEVELOPMENT
 A PORTION OF SECTION 15, T.22N., R.12E., M.D.M.
 PLUMAS COUNTY, CALIFORNIA

LUNDY ENGINEERING - GRAEAGLE, CALIFORNIA
 JANUARY, 1978

PARCEL "A" BOUNDARY CALLS

a. N 04° 22' 05" E 203.79	p. S 31° 32' 53" W 132.99
b. A 15° 07' 53" R: 1094.37 T: 153.46 L: 304.93	q. S 34° 41' 08" E 317.60
c. N 20° 20' 01" E 187.21	r. S 56° 40' 12" W 420.09
d. N 51° 09' 40" E 166.30	s. A: 20° 57' 24" R: 860 T: 159.06 L: 314.56
e. N 57° 30' 00" E 166.00	t. S 37° 09' 33" E 94.32
f. S 63° 31' 26" E 96.00	u. A: 37° 21' 30" R: 400 T: 135.23 L: 260.91
g. N 26° 28' 34" E 130.00	v. S 74° 31' 03" E 298.62
h. N 63° 31' 26" W 72.00	
i. N 40° 31' 29" W 373.36	
j. N 26° 40' 39" W 194.10	
k. N 75° 04' 39" W 178.89	
l. S 61° 57' 19" W 363.71	
m. S 51° 40' 00" W 164.45	
n. S 55° 42' 47" W 53.25	
o. S 38° 04' 22" W 76.22	

NOTE: NO BUILDINGS SHALL
 BE CONSTRUCTED OVER
 SEWER EASEMENT CROSSING
 LOTS 59 & 60.



LOCATION PLAN
 NO SCALE

- LEGEND**
- FOUND 1/2" REBAR W/ PLASTIC CAP STAMPED RCE 15265
 - SET 1/2" REBAR W/ PLASTIC CAP STAMPED RCE 15265
 - └ MONUMENT IS EDGE OF FOUNDATION.

BASIS OF BEARING
 THE BASIS OF BEARING IS THE NORTH WESTERN MOST LINE OF GRAEAGLE MEADOWS UNIT NO. 1, GIVEN AS S 28° 58' 55" W IN BOOK A OF MAPS AT PAGES 58, 59 & 60, AUGUST 15, 1975 PLUMAS COUNTY RECORDS.

AREA TABULATION	SQUARE FEET
LOTS 45, 46, 55, 56	3402
LOTS 47-50 & 61-64	14,796
LOTS 51 & 52	2716
LOTS 53, 54 & 57-60	10,080
LOT "E"	183,669.68
TOTAL BOUNDARY	214,663.68 (4.928 ac.)