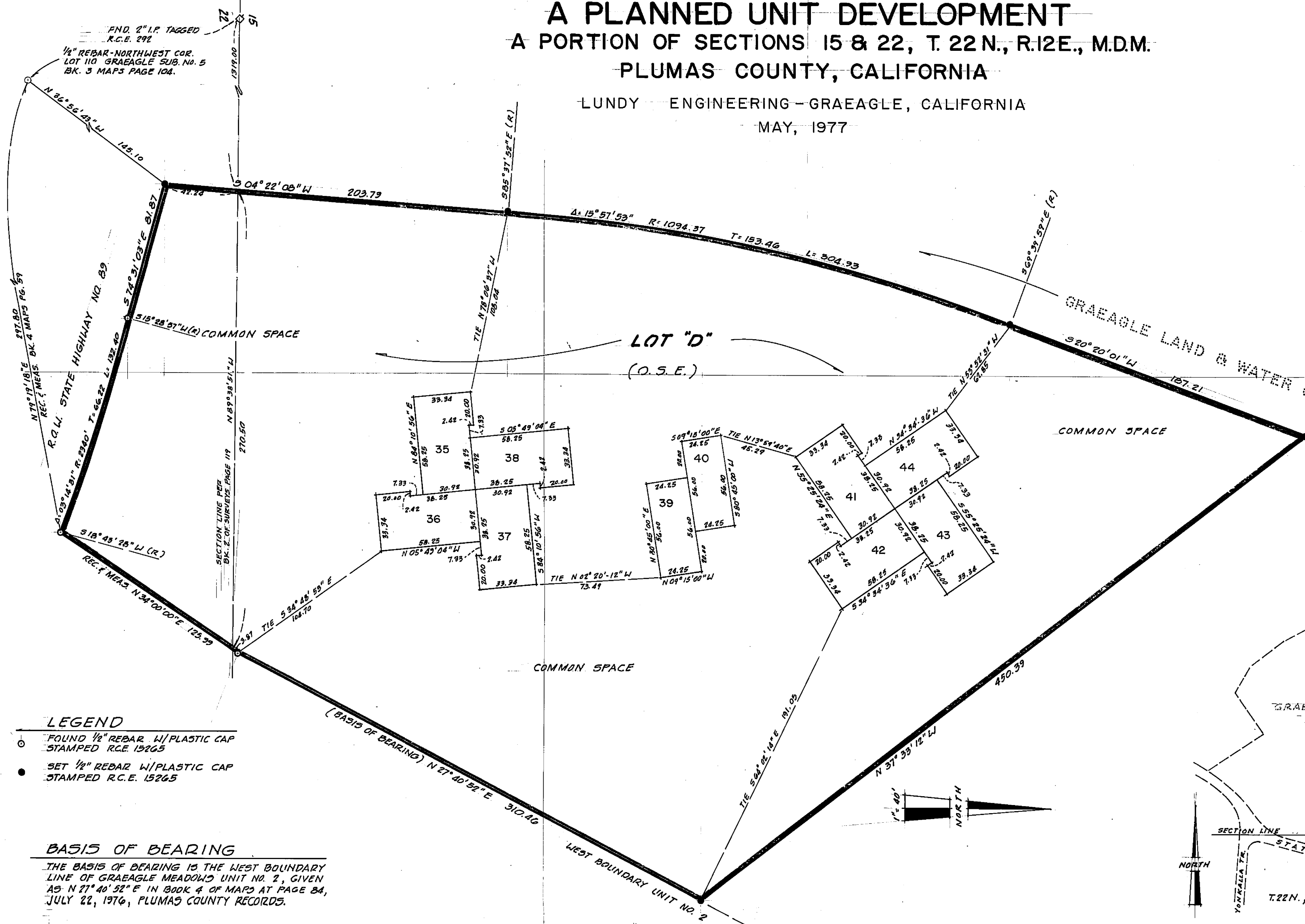


GRAEAGLE MEADOWS UNIT NO. 3

A PLANNED UNIT DEVELOPMENT
 A PORTION OF SECTIONS 15 & 22, T. 22 N., R. 12 E., M.D.M.
 PLUMAS COUNTY, CALIFORNIA

LUNDY ENGINEERING - GRAEAGLE, CALIFORNIA
 MAY, 1977

AREA TABULATION	SQUARE FEET
LOTS 35-38 & LOTS 41-44	14,796
LOTS 39 & 40	2,716
LOT "D"	64,277
TOTAL BOUNDARY	81,789 (4.173 ac.)



LEGEND

- FOUND 1/2" REBAR W/ PLASTIC CAP STAMPED R.C.E. 15265
- SET 1/2" REBAR W/ PLASTIC CAP STAMPED R.C.E. 15265

BASIS OF BEARING

THE BASIS OF BEARING IS THE WEST BOUNDARY LINE OF GRAEAGLE MEADOWS UNIT NO. 2, GIVEN AS N 27° 40' 52" E IN BOOK 4 OF MAPS AT PAGE 84, JULY 22, 1976, PLUMAS COUNTY RECORDS.