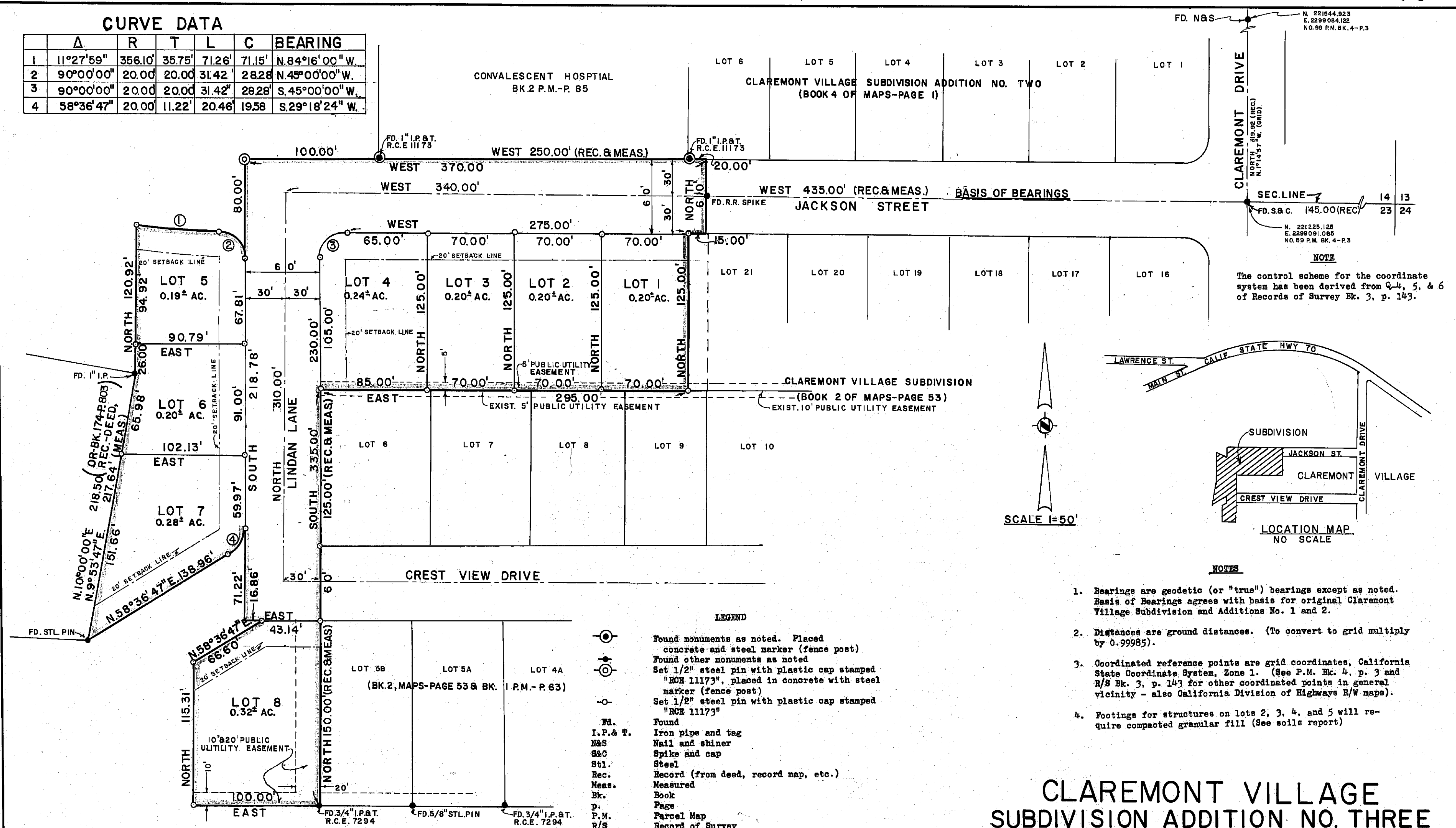
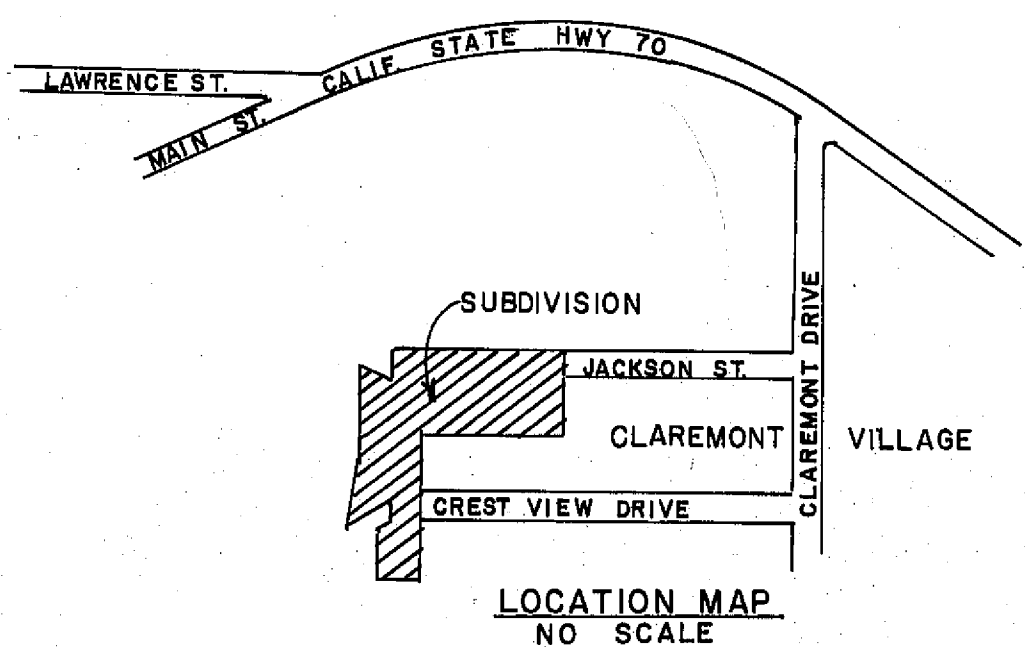


CURVE DATA

| | Δ | R | T | L | C | BEARING |
|---|-----------|---------|--------|--------|--------|---------------|
| 1 | 11°27'59" | 356.10' | 35.75' | 71.26' | 71.15' | N.84°16'00"W. |
| 2 | 90°00'00" | 20.00' | 20.00' | 31.42' | 28.28' | N.45°00'00"W. |
| 3 | 90°00'00" | 20.00' | 20.00' | 31.42' | 28.28' | S.45°00'00"W. |
| 4 | 58°36'47" | 20.00' | 11.22' | 20.46' | 19.58' | S.29°18'24"W. |



NOTE
The control scheme for the coordinate system has been derived from Q-4, 5, & 6 of Records of Survey Bk. 3, p. 143.



NOTES

1. Bearings are geodetic (or "true") bearings except as noted. Basis of Bearings agrees with basis for original Claremont Village Subdivision and Additions No. 1 and 2.
2. Distances are ground distances. (To convert to grid multiply by 0.99985).
3. Coordinated reference points are grid coordinates, California State Coordinate System, Zone 1. (See P.M. Bk. 4, p. 3 and R/S Bk. 3, p. 143 for other coordinated points in general vicinity - also California Division of Highways R/W maps).
4. Footings for structures on lots 2, 3, 4, and 5 will require compacted granular fill (See soils report)

LEGEND

- ⊙ Found monuments as noted. Placed concrete and steel marker (fence post)
- ⊙ Found other monuments as noted
- ⊙ Set 1/2" steel pin with plastic cap stamped "RCE 11173", placed in concrete with steel marker (fence post)
- ⊙ Set 1/2" steel pin with plastic cap stamped "RCE 11173"
- ⊙ Found
- ⊙ Iron pipe and tag
- ⊙ Nail and shiner
- ⊙ S&C Spike and cap
- ⊙ Stl. Steel
- ⊙ Rec. Record (from deed, record map, etc.)
- ⊙ Meas. Measured
- ⊙ Bk. Book
- ⊙ P. Page
- ⊙ P.M. Parcel Map
- ⊙ R/S Record of Survey
- ⊙ R/W Right-of-way
- ⊙ O.R. Official Records, Blumas Co. records

TOTAL ACREAGE 2.74
TOTAL ACREAGE IN LOTS 1.83
TOTAL ACREAGE IN STREETS 0.91

CLAREMONT VILLAGE SUBDIVISION ADDITION NO. THREE

WITHIN
SE 1/4 SE 1/4 SEC. 14, T. 24N. R. 9E., M.D.M.
NE 1/4 NE 1/4 SEC. 23, T. 24N. R. 9E., M.D.M.
PLUMAS COUNTY, CALIFORNIA
RECORD OWNER
ERNEST G. LEONHARDT

JOHN C. SIMPSON, P.E.
CIVIL ENGINEER
P.O. BOX 719
QUINCY, CALIFORNIA