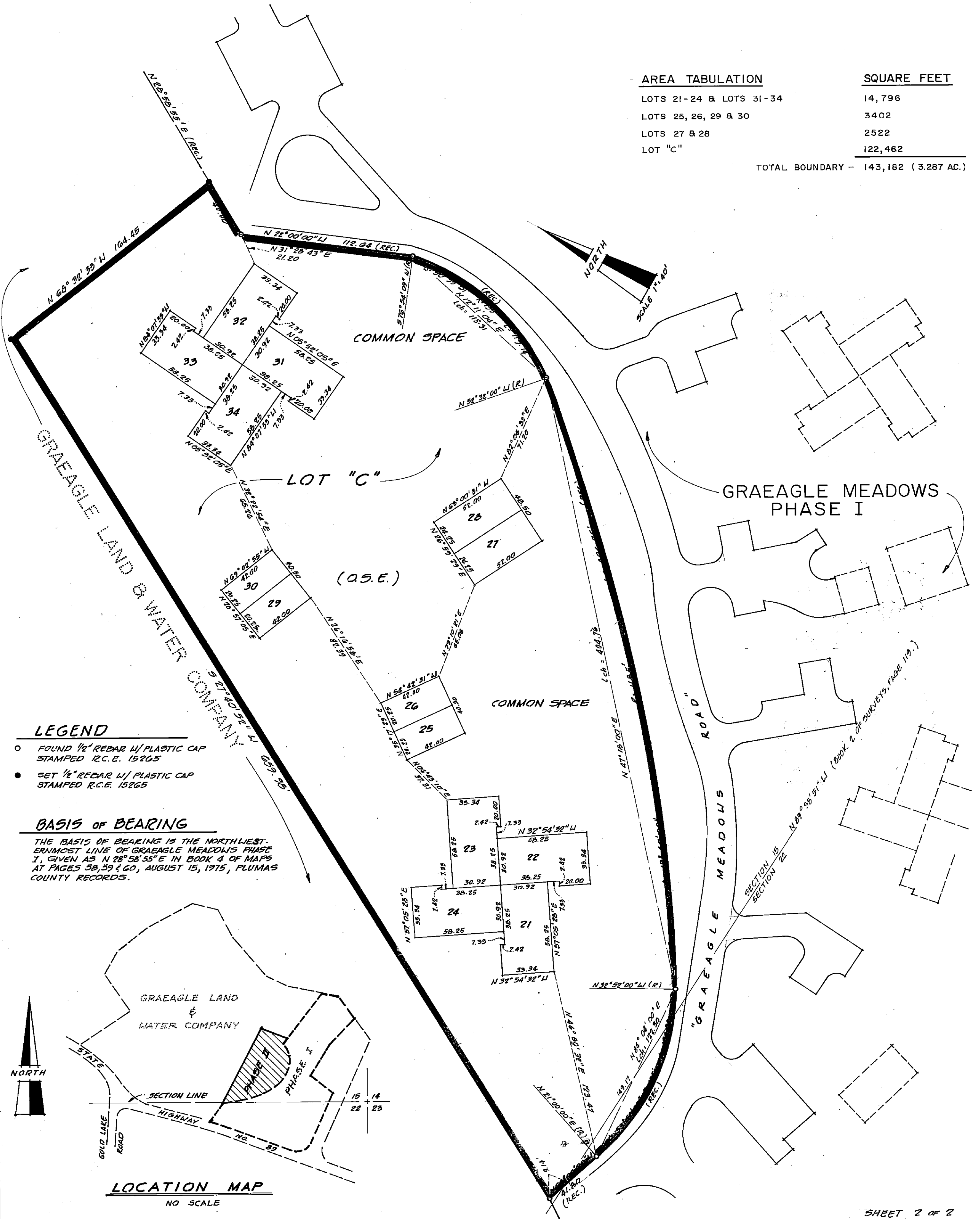


GRAEAGLE MEADOWS UNIT NO. 2

A PLANNED UNIT DEVELOPMENT
 A PORTION OF SECTIONS 15 & 22, T.22N., R.12E., M.D.M.
 PLUMAS COUNTY, CALIFORNIA

LUNDY ENGINEERING - GRAEAGLE, CALIFORNIA
 JUNE, 1976
 SCALE 1"=40'

| AREA TABULATION | SQUARE FEET |
|-------------------------|---------------------|
| LOTS 21-24 & LOTS 31-34 | 14,796 |
| LOTS 25, 26, 29 & 30 | 3402 |
| LOTS 27 & 28 | 2522 |
| LOT "C" | 122,462 |
| TOTAL BOUNDARY - | 143,182 (3.287 AC.) |



LEGEND

- FOUND 1/2" REBAR W/ PLASTIC CAP STAMPED R.C.E. 15265
- SET 1/2" REBAR W/ PLASTIC CAP STAMPED R.C.E. 15265

BASIS OF BEARING

THE BASIS OF BEARING IS THE NORTHWEST-ERNMOST LINE OF GRAEAGLE MEADOWS PHASE I, GIVEN AS N 28° 58' 55" E IN BOOK 4 OF MAPS AT PAGES 58, 59 & 60, AUGUST 15, 1975, PLUMAS COUNTY RECORDS.

LOCATION MAP

NO SCALE