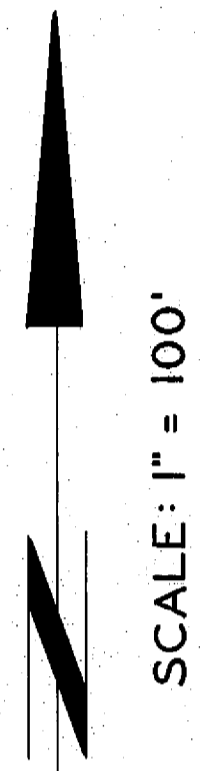
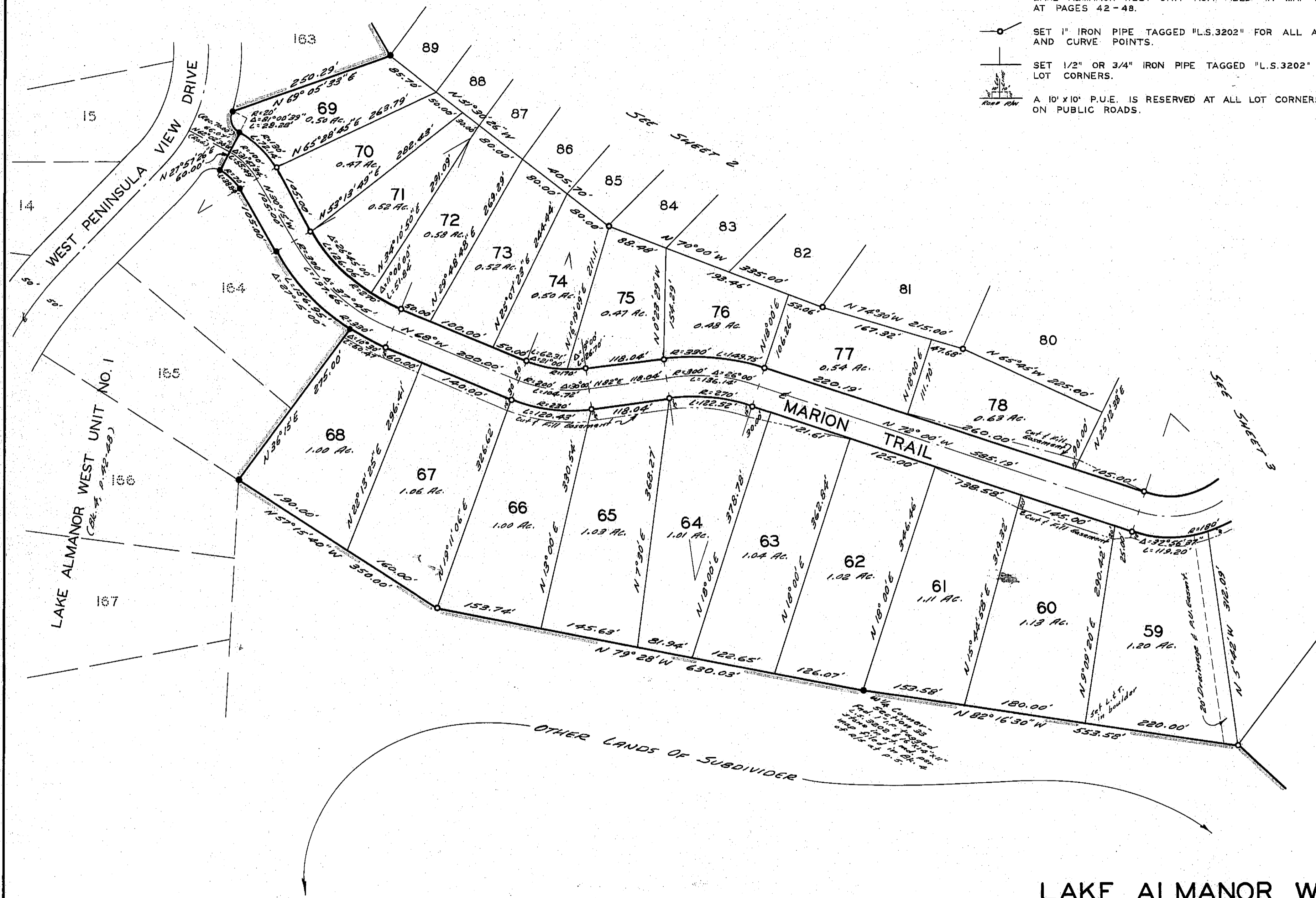


LEGEND

- FOUND IRON PIPE MONUMENT TAGGED "L.S.3202" PER LAKE ALMANOR WEST UNIT NO.1 FILED IN MAP BOOK 4 AT PAGES 42-48.
- SET 1" IRON PIPE TAGGED "L.S.3202" FOR ALL ANGLE AND CURVE POINTS.
- ⊥ SET 1/2" OR 3/4" IRON PIPE TAGGED "L.S.3202" FOR ALL LOT CORNERS.
- ⊥ A 10' X 10' P.U.E. IS RESERVED AT ALL LOT CORNERS FRONTING ON PUBLIC ROADS.



LAKE ALMANOR WEST UNIT NO. 2
 IN A PORTION OF SECTIONS 32 & 33, T.28N., R. 7E., M.D.B. & M.
 PLUMAS COUNTY, CALIFORNIA
 SCALE: 1" = 100'

RECORDED IN BOOK 4 OF MAPS AT PAGE 80

SHEET 5 OF 5

74-57

4 M 80