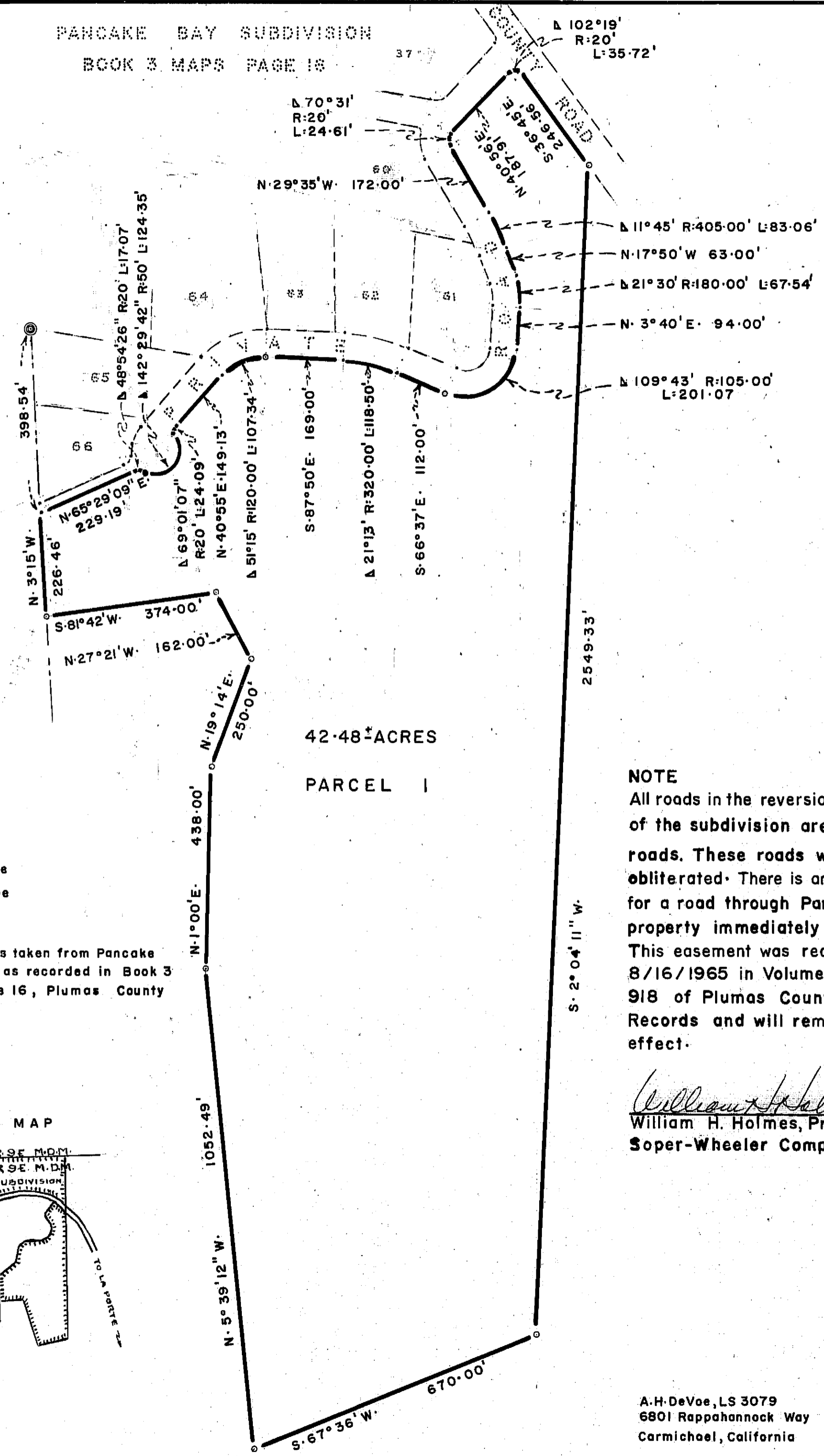


PANCAKE BAY SUBDIVISION
BOOK 3 MAPS PAGE 16

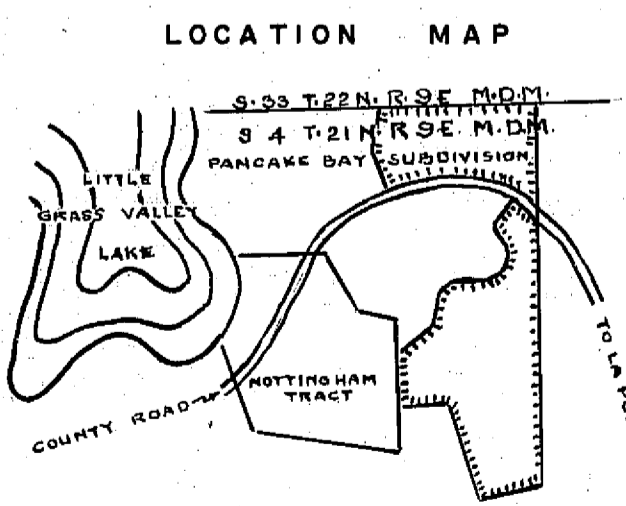
NOTTINGHAM TRACT
BOOK 2 MAPS PAGE 67



42.48± ACRES
PARCEL 1

LEGEND
 ○ 3/4" Iron pipe
 ⊙ 1/2 Iron pipe

Basis of Bearing is taken from Pancake Bay Subdivision as recorded in Book 3 of Maps at page 16, Plumas County Records.



NOTE
 All roads in the reversion portions of the subdivision are private roads. These roads will not be obliterated. There is an easement for a road through Parcel 2 to the property immediately adjacent. This easement was recorded on 8/16/1965 in Volume 170, Page 918 of Plumas County Official Records and will remain in effect.

William H. Holmes
 William H. Holmes, President
 Soper-Wheeler Company

A.H. DeVoe, LS 3079
 6801 Rappahannock Way
 Carmichael, California

OWNERS CERTIFICATE

This is to certify that Soper-Wheeler Company, a California Corporation, is the sole owner of all rights and interests to that tract of land in Pancake Bay Subdivision reverting to acreage as shown on this map. Soper-Wheeler Company hereby consents to the preparation and recording of this map in witness whereof, said Corporation has caused its President and Vice President to sign their names and affix its corporate seal hereto this 1st day of July 1975.

James P. Soper
 James P. Soper, Vice President

William H. Holmes
 William H. Holmes, President

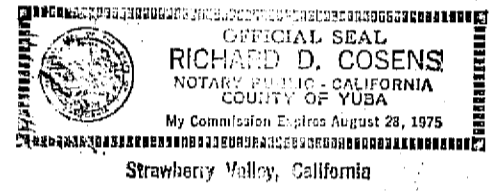
State of California)
 County of Yuba) ss

On this 1st day of July in the year of 1975 before me Richard D. Cozens a notary public in and for the State of California with principal office in Yuba County personally appeared William H. Holmes and James P. Soper known to me to be the President and Vice President of the Corporation that executed the within instrument on behalf of Soper-Wheeler Company and acknowledged to me that such Corporation executed the same.

Witness my hand and official seal this 1st day of July 1975.

My commission expires August 28 1975

Richard D. Cozens
 Notary Public



SURVEYORS CERTIFICATE

This map was prepared by me or under my direction and was compiled from record data in conformance with the requirements of the Subdivision Map Act at the request of W.H. Holmes on June 1975. I hereby certify all provisions of applicable state law and local ordinances have been complied with.

Albert H. DeVoe
 Albert H. DeVoe, Licensed Surveyor 3079

COUNTY CLERK'S CERTIFICATE

I, Raynelle Slater, Clerk of the County of Plumas, State of California, and Ex-Officio Clerk of the Board of Supervisors of said County, hereby certify that the herein embodied map was approved by the said Board of Supervisors convened in regular meeting upon the 21st day of October 1975.

Raynelle Slater

COUNTY SURVEYOR'S CERTIFICATE

This map conforms with the requirements of the Subdivision Map Act and local ordinance.

10-21-75

Larry A. Fites
 Larry A. Fites CE 13225 County Engineer

RECORDERS CERTIFICATE

Filed this 22nd day of OCTOBER 1975, at 12:40 Pm, in Book 4 of Maps, at page 64 at the request of the Soper-Wheeler Company.
 Fee \$7.00 Recording N° 2497

Dorothy Ann Masley
 Recorder, Plumas County
 by *Sona S. Brown*

MAP TO REVERT A PORTION OF PANCAKE BAY SUBDIVISION TO ACREAGE

Being a portion of Lot 2,3,7, and SW/4NE1/4 of Section 4, Township 21 North, Range 9 East, M.D.M.

SCALE 1"=200' JUNE 1975

PLUMAS COUNTY, CALIFORNIA
 SHEET 1 OF 2

4 Maps 64