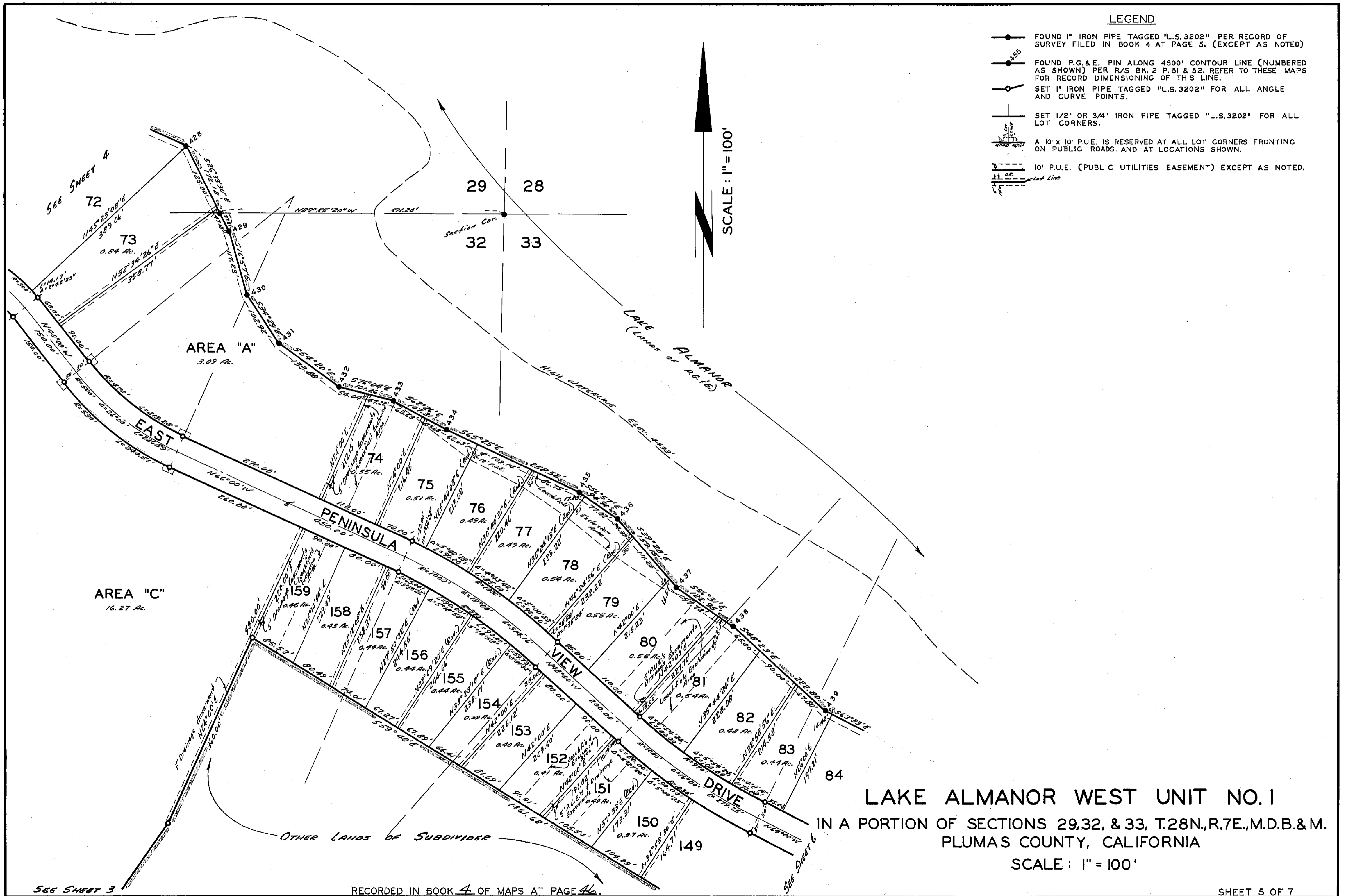


LEGEND

- FOUND 1" IRON PIPE TAGGED "L.S.3202" PER RECORD OF SURVEY FILED IN BOOK 4 AT PAGE 5; (EXCEPT AS NOTED)
- FOUND P.G.&E. PIN ALONG 4500' CONTOUR LINE (NUMBERED AS SHOWN) PER R/S BK. 2 P. 51 & 52; REFER TO THESE MAPS FOR RECORD DIMENSIONING OF THIS LINE.
- SET 1" IRON PIPE TAGGED "L.S.3202" FOR ALL ANGLE AND CURVE POINTS.
- SET 1/2" OR 3/4" IRON PIPE TAGGED "L.S.3202" FOR ALL LOT CORNERS.
- A 10' X 10' P.U.E. IS RESERVED AT ALL LOT CORNERS FRONTING ON PUBLIC ROADS AND AT LOCATIONS SHOWN.
- 10' P.U.E. (PUBLIC UTILITIES EASEMENT) EXCEPT AS NOTED.

SCALE: 1" = 100'



**LAKE ALMANOR WEST UNIT NO. 1**  
 IN A PORTION OF SECTIONS 29, 32, & 33, T.28N., R.7E., M.D.B. & M.  
 PLUMAS COUNTY, CALIFORNIA  
 SCALE: 1" = 100'

SEE SHEET 3

RECORDED IN BOOK 4 OF MAPS AT PAGE 46.

SHEET 5 OF 7

4M46 73-88