



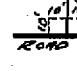
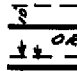
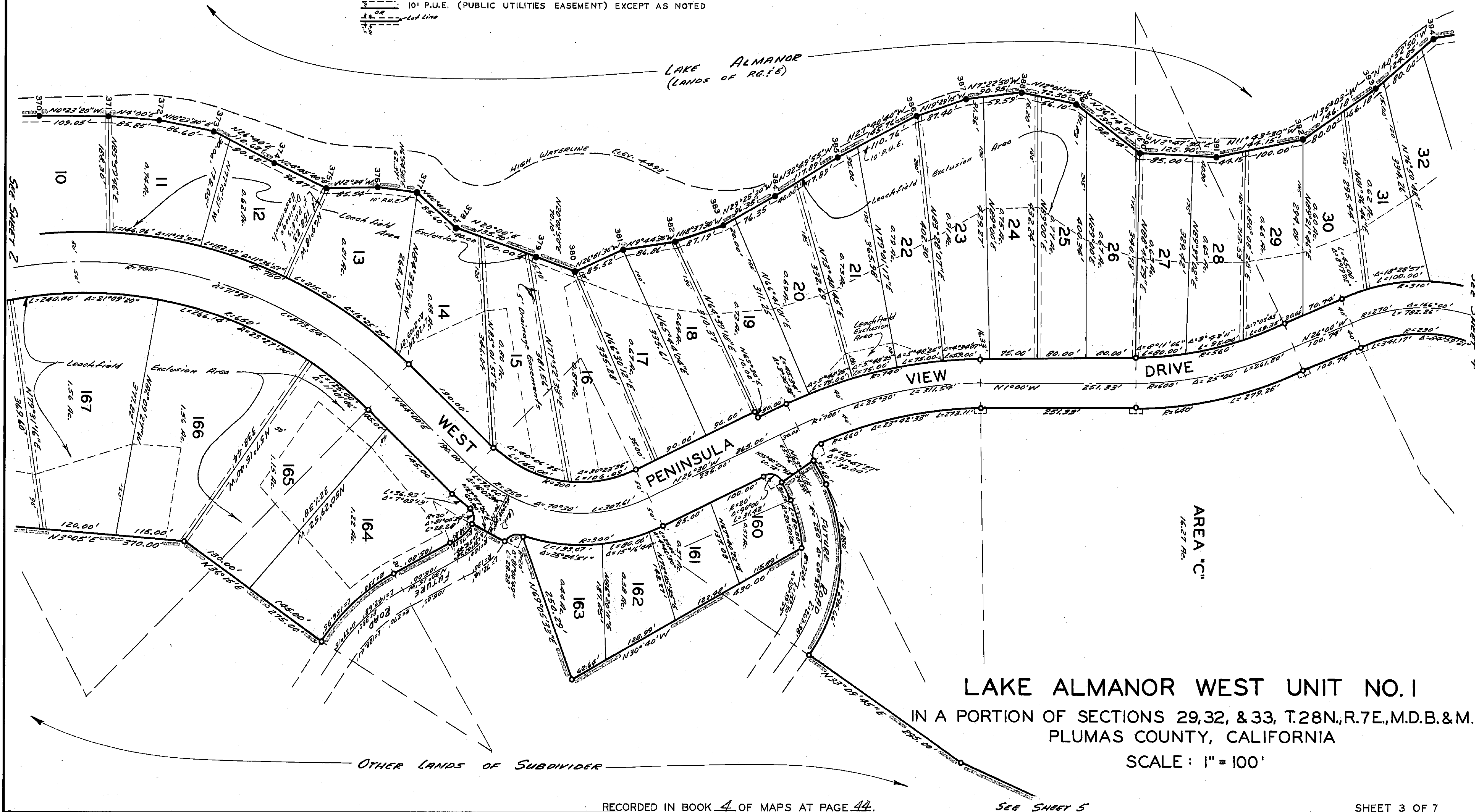


LEGEND

-  FOUND 1" IRON PIPE TAGGED "L.S.3202" PER RECORD OF SURVEY FILED IN BOOK 4 AT PAGE 5 (EXCEPT AS NOTED)
-  FOUND P.G.&E. PIN ALONG 4500' CONTOUR LINE (NUMBERED AS SHOWN) PER R/S BK.2 P.51 & 52. REFER TO THESE MAPS FOR RECORD DIMENSIONING OF THIS LINE.
-  SET 1" IRON PIPE TAGGED "L.S.3202" FOR ALL ANGLE AND CURVE POINTS.
-  SET 1/2" OR 3/4" IRON PIPE TAGGED "L.S.3202" FOR ALL LOT CORNERS.
-  A 10' X 10' P.U.E. IS RESERVED AT ALL LOT CORNERS FRONTING ON PUBLIC ROADS AND AT LOCATIONS SHOWN.
-  10' P.U.E. (PUBLIC UTILITIES EASEMENT) EXCEPT AS NOTED

SCALE: 1" = 100'



LAKE ALMANOR WEST UNIT NO. 1  
 IN A PORTION OF SECTIONS 29, 32, & 33, T.28N., R.7E., M.D.B. & M.  
 PLUMAS COUNTY, CALIFORNIA

SCALE: 1" = 100'

RECORDED IN BOOK 4 OF MAPS AT PAGE 44.

SEE SHEET 5

SHEET 3 OF 7

4M44 73-88