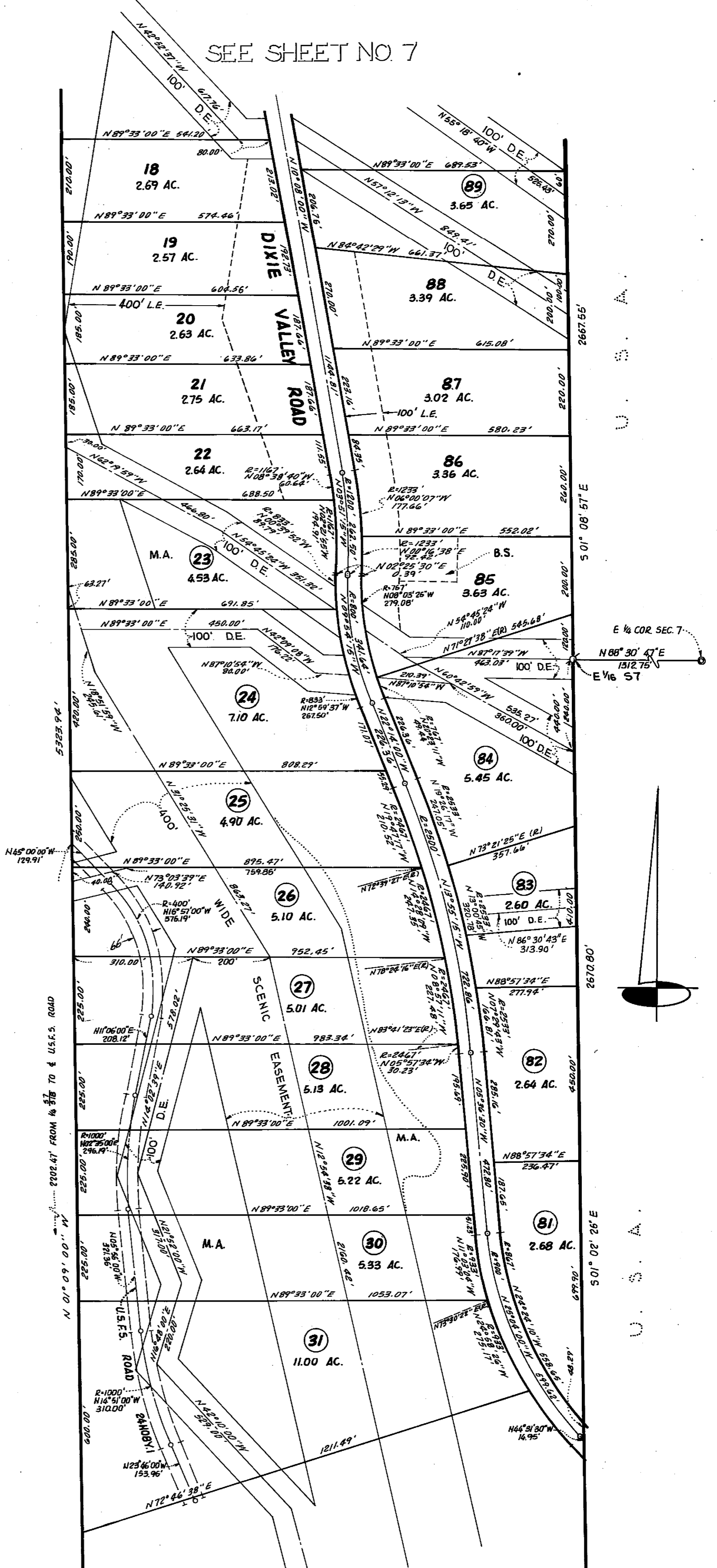


DIXIE VALLEY PROPERTIES UNIT 1

BEING A PORTION OF
SECTIONS 6, 7, 17, 18, 20 AND 21
TOWNSHIP 24 NORTH, RANGE 15 EAST, M.D.M.
PLUMAS COUNTY, CALIFORNIA
SCALE: 1" = 200' OCTOBER, 1971
THE MURRAY - McCORMICK ENVIRONMENTAL GROUP
RENO, NEVADA
SHEET 6 OF 9 SHEETS

SEE SHEET NO. 7



SEE SHEET NO. 5