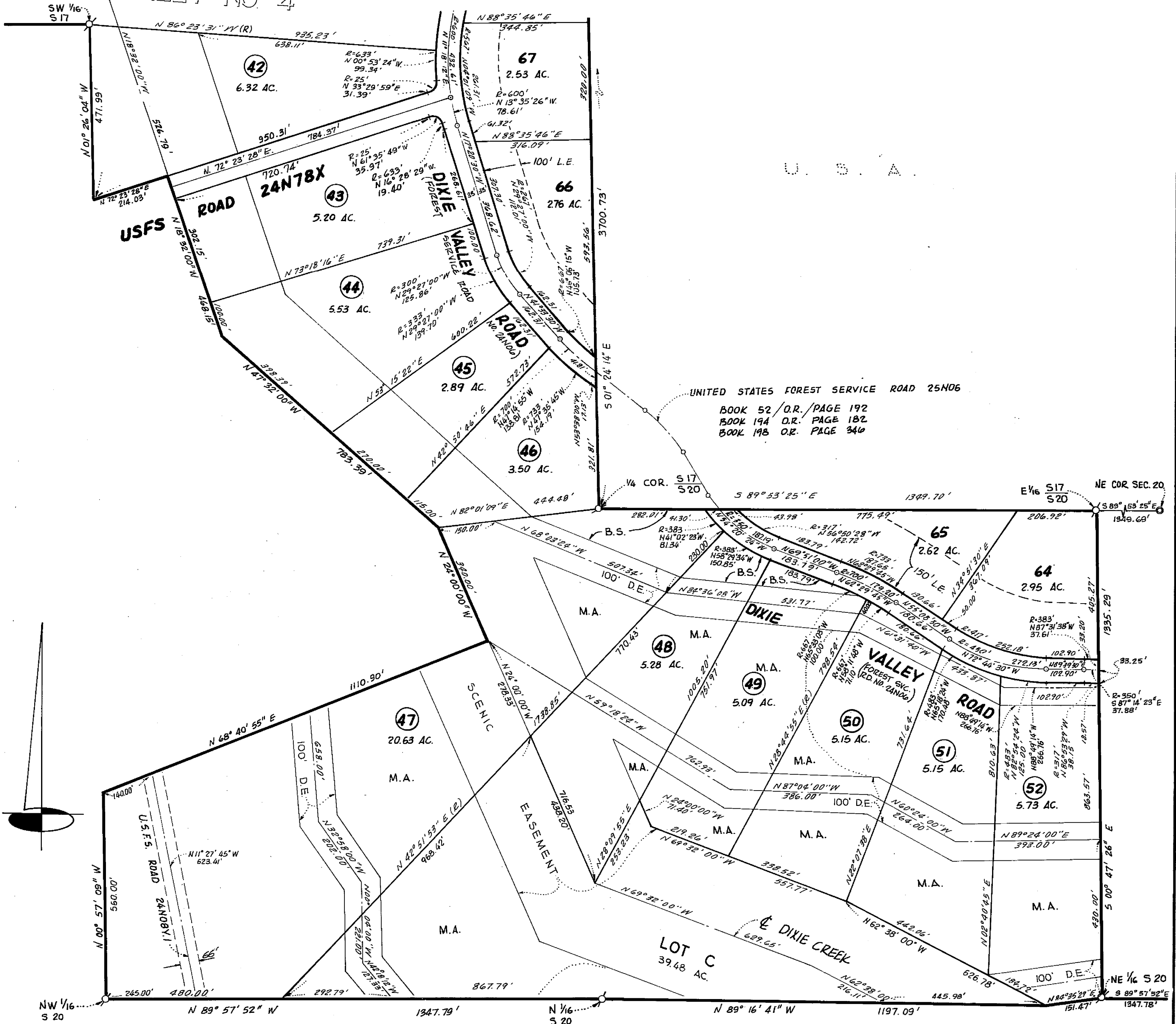


# DIXIE VALLEY PROPERTIES UNIT 1

BEING A PORTION OF  
SECTIONS 6, 7, 17, 18, 20 AND 21  
TOWNSHIP 24 NORTH, RANGE 15 EAST, M.D.M.

PLUMAS COUNTY, CALIFORNIA  
SCALE: 1"=200'  
OCTOBER, 1971  
THE MURRAY - MCGORMICK ENVIRONMENTAL GROUP  
RENO, NEVADA  
SHEET 3 OF 9 SHEETS

SEE SHEET NO 4



UNITED STATES FOREST SERVICE ROAD 25N06  
BOOK 52 / O.R. / PAGE 192  
BOOK 194 O.R. PAGE 182  
BOOK 198 O.R. PAGE 340

4M7