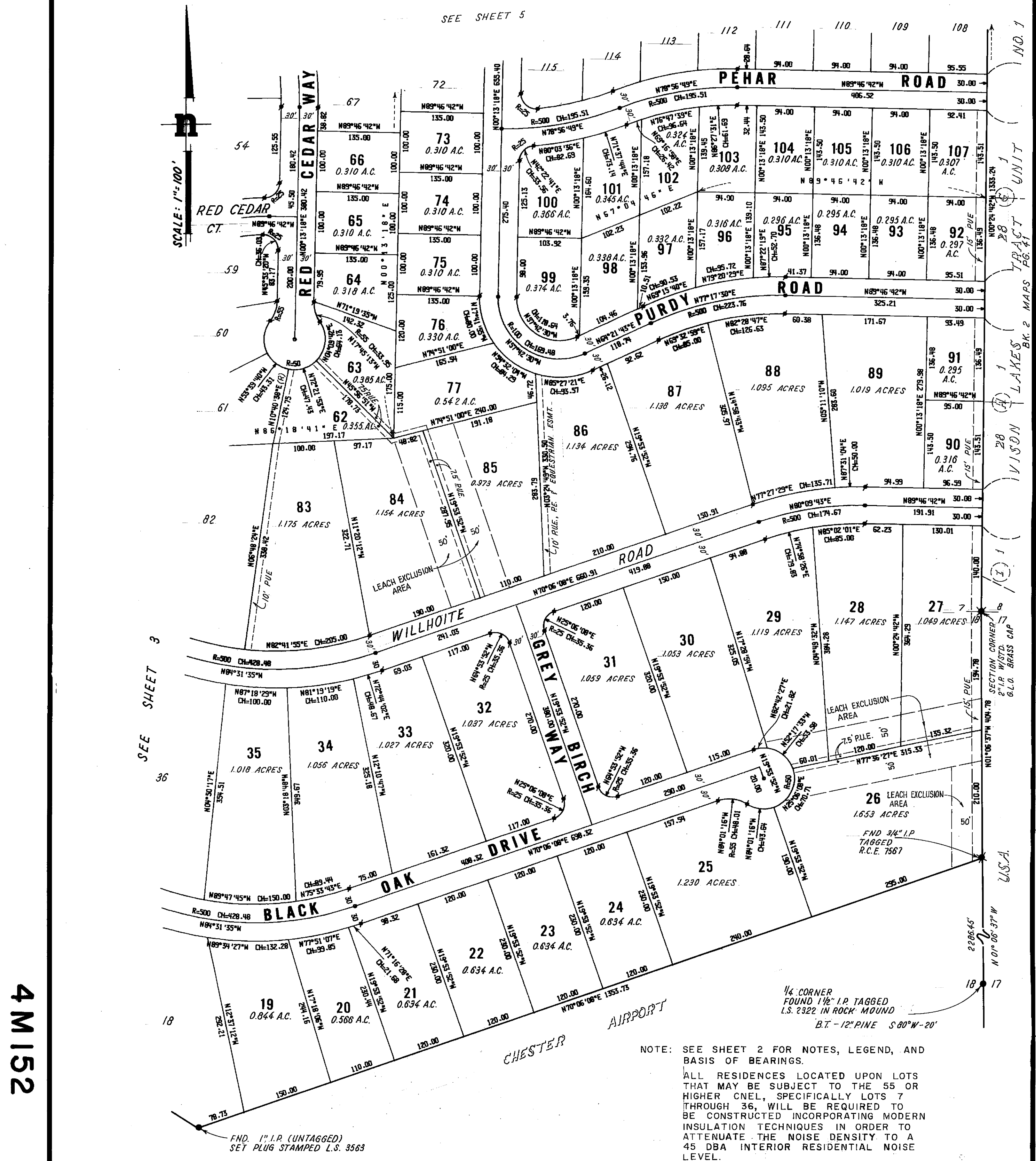


SUBDIVISION MAP OF
LAKE ALMADOR FOREST
 PORTION OF SECTIONS 7 & 18, T.28N., R.7E., M.D.M.
 COUNTY OF PLUMAS
 CALIFORNIA
 SCALE: 1"=100'
 LLOYD PARKER, LAND SURVEYOR

SHEET 4 OF 5



SCALE: 1"=100'

SEE SHEET 5

SEE SHEET 3

NOTE: SEE SHEET 2 FOR NOTES, LEGEND, AND BASIS OF BEARINGS.

ALL RESIDENCES LOCATED UPON LOTS THAT MAY BE SUBJECT TO THE 55 OR HIGHER CNEL, SPECIFICALLY LOTS 7 THROUGH 36, WILL BE REQUIRED TO BE CONSTRUCTED INCORPORATING MODERN INSULATION TECHNIQUES IN ORDER TO ATTENUATE THE NOISE DENSITY TO A 45 DBA INTERIOR RESIDENTIAL NOISE LEVEL.

4M152

152

FND. 1" I.P. (UNTAGGED)
 SET PLUG STAMPED L.S. 3563

1/4 CORNER
 FOUND 1 1/2" I.P. TAGGED
 L.S. 2322 IN ROCK MOUND
 B.T. - 12" PINE S 80° W - 20'