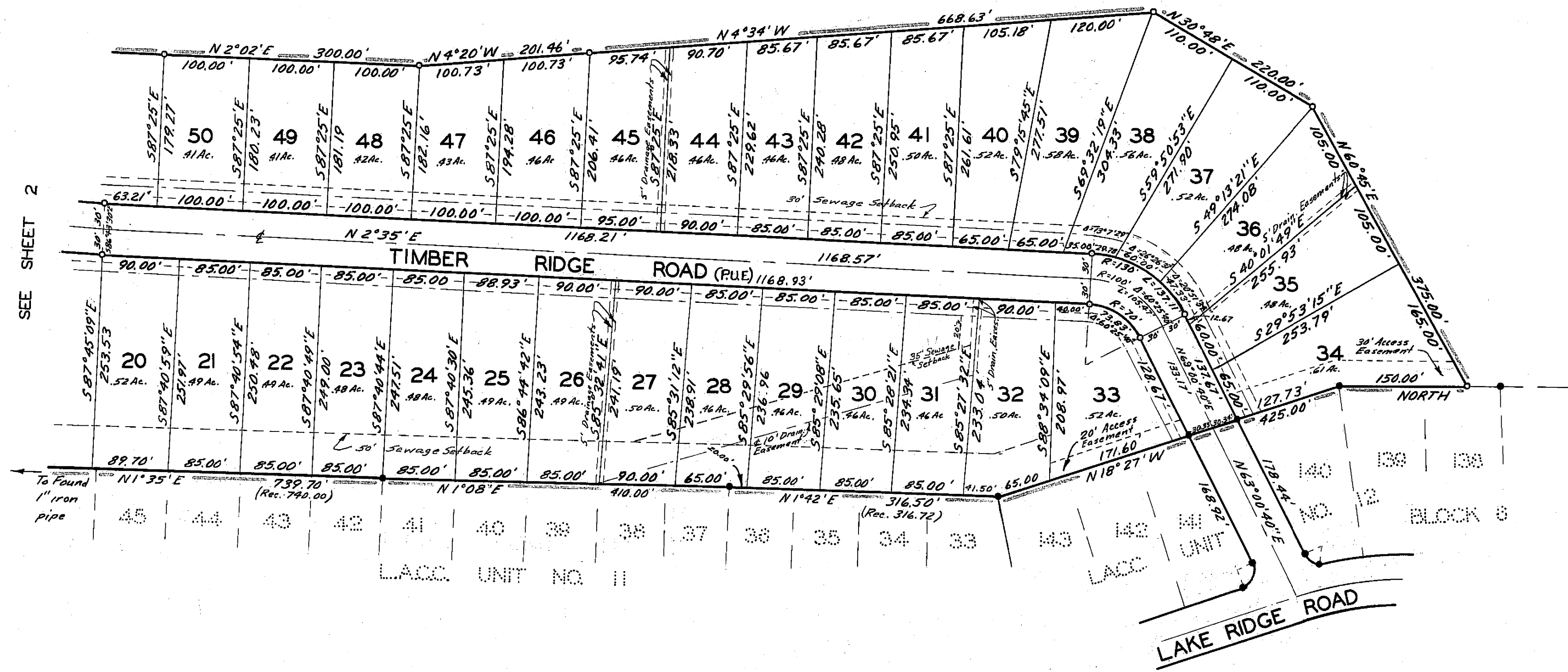


SCALE: 1" = 100'

OTHER LANDS OF SUBDIVIDER



SEE SHEET 2

LEGEND

- FOUND IRON PIPE MONUMENT ON SUBDIVISION BOUNDARIES OF L.A.C.C. UNIT 9, UNIT 11, OR UNIT 12
- SET 1" IRON PIPE TAGGED "L.S. 3202" FOR ANGLE AND CURVE POINTS
- SET 3/4" IRON PIPE TAGGED "L.S. 3202" FOR ALL LOT CORNERS
- 20' BUILDING SETBACK LINES
- 10' R.U.E. (PUBLIC UTILITIES EASEMENT) EXCEPT AS NOTED

LAKE ALMANOR COUNTRY CLUB UNIT NO. 17

IN A PORTION OF SECTION 25, T28 N, R 7 E, MDB & M

PLUMAS COUNTY, CALIFORNIA

SCALE: 1" = 100'

OWNER & SUBDIVIDER: EDWARD A. CLIFFORD

SIMPSON & ASSOCIATES, ENGINEERS & SURVEYORS
SUSANVILLE, CALIFORNIA

REC. IN BOOK _____ OF MAPS AT PAGE _____

SHEET 3 OF 3

70-08

3M107