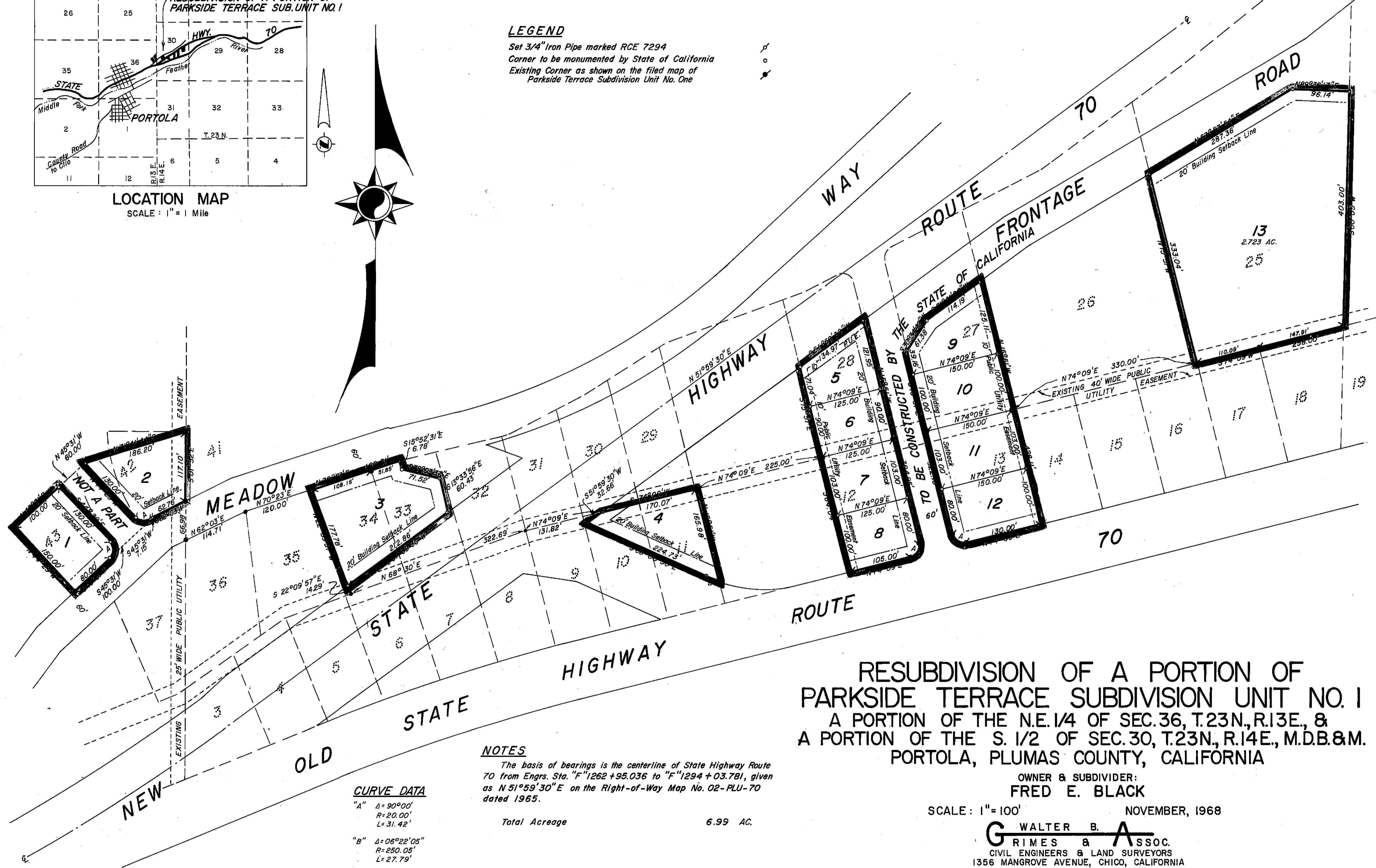
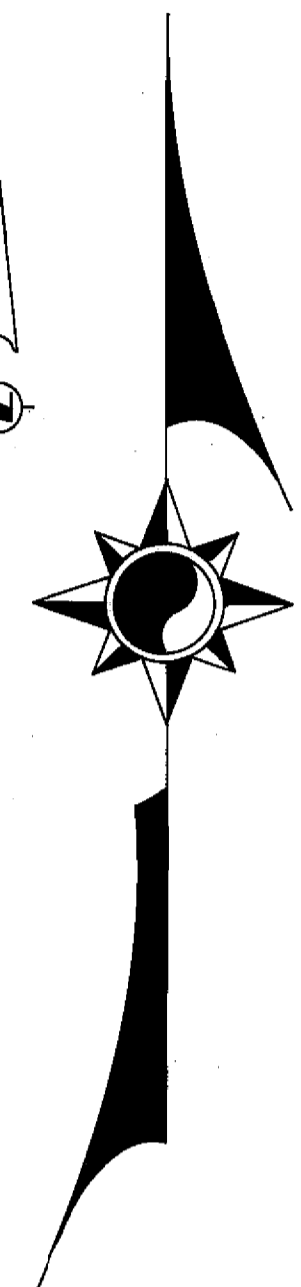


LOCATION MAP  
SCALE: 1" = 1 Mile

**LEGEND**  
 Set 3/4" Iron Pipe marked RCE 7294  
 Corner to be monumented by State of California  
 Existing Corner as shown on the filed map of  
 Parkside Terrace Subdivision Unit No. One



**RESUBDIVISION OF A PORTION OF  
 PARKSIDE TERRACE SUBDIVISION UNIT NO. 1**  
 A PORTION OF THE N.E. 1/4 OF SEC. 36, T. 23 N., R. 13 E., &  
 A PORTION OF THE S. 1/2 OF SEC. 30, T. 23 N., R. 14 E., M.D.B. & M.  
 PORTOLA, PLUMAS COUNTY, CALIFORNIA

OWNER & SUBDIVIDER:  
**FRED E. BLACK**

SCALE: 1" = 100' NOVEMBER, 1968

**G WALTER B. ASSOC.**  
 CIVIL ENGINEERS & LAND SURVEYORS  
 1356 MANGROVE AVENUE, CHICO, CALIFORNIA  
 SHEET 2 OF 2 SHEETS

**NOTES**  
 The basis of bearings is the centerline of State Highway Route  
 70 from Engrs. Sta. "F" 1262 + 95.036 to "F" 1294 + 03.781, given  
 as N 51° 59' 30" E on the Right-of-Way Map No. 02-PLU-70  
 dated 1965.

**CURVE DATA**  
 "A" Δ = 90° 00'  
 R = 20.00'  
 L = 31.42'  
 "B" Δ = 06° 22' 05"  
 R = 250.05'  
 L = 27.79'

Total Acreage 6.99 AC.