

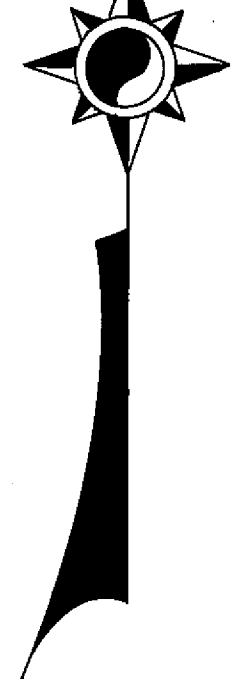
NOTES

The Basis of Bearing is the Southeast line of Bald Mountain Extension Location Lot 50, given as S 46°45'52"W, as shown on that certain map filed December 8, 1965, in Book 3 of Surveys at page 52, file No. 2755.

Total Acreage 24.50 Ac.
Total Acreage in Lots 19.70 Ac.
Total Acreage in Streets 4.80 Ac.

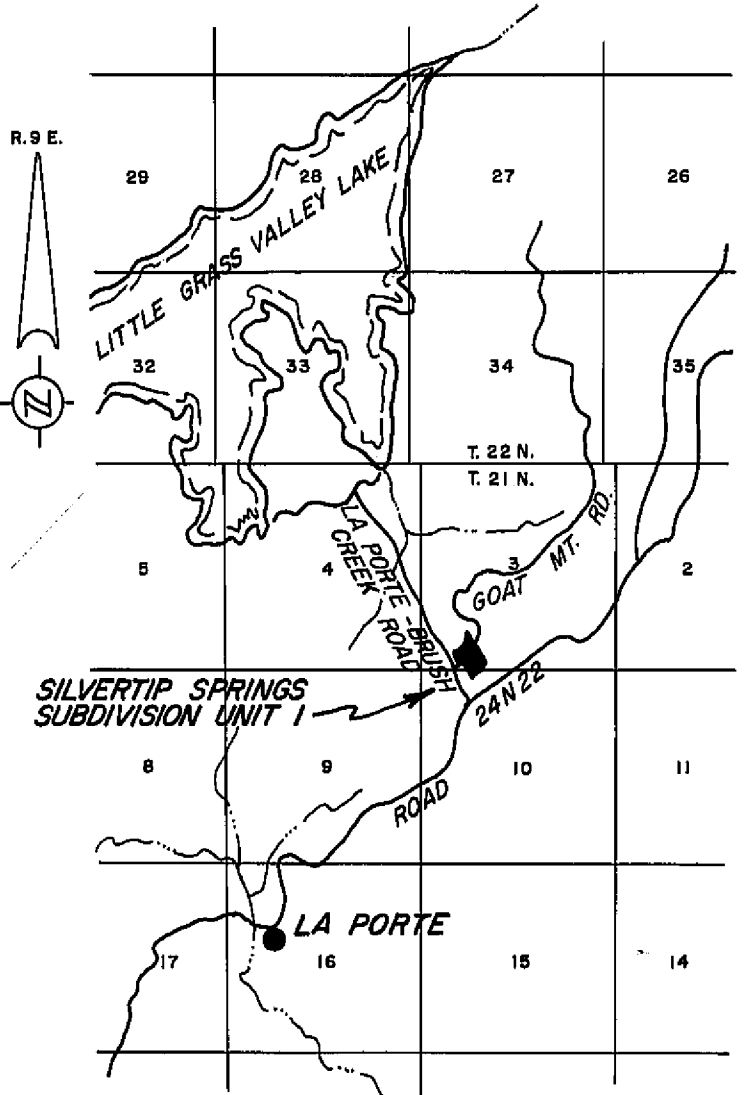
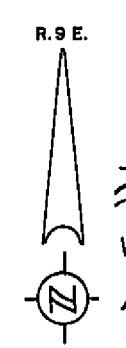
CURVE DATA

- "A" Δ= 92°03'46"
R= 20.00'
L= 32.14'
- "B" Δ= 78°27'46"
R= 20.00'
L= 27.33'
- "C" Δ= 109°28'17"
R= 20.00'
L= 38.21'
- "D" Δ= 87°56'14"
R= 20.00'
L= 30.70'



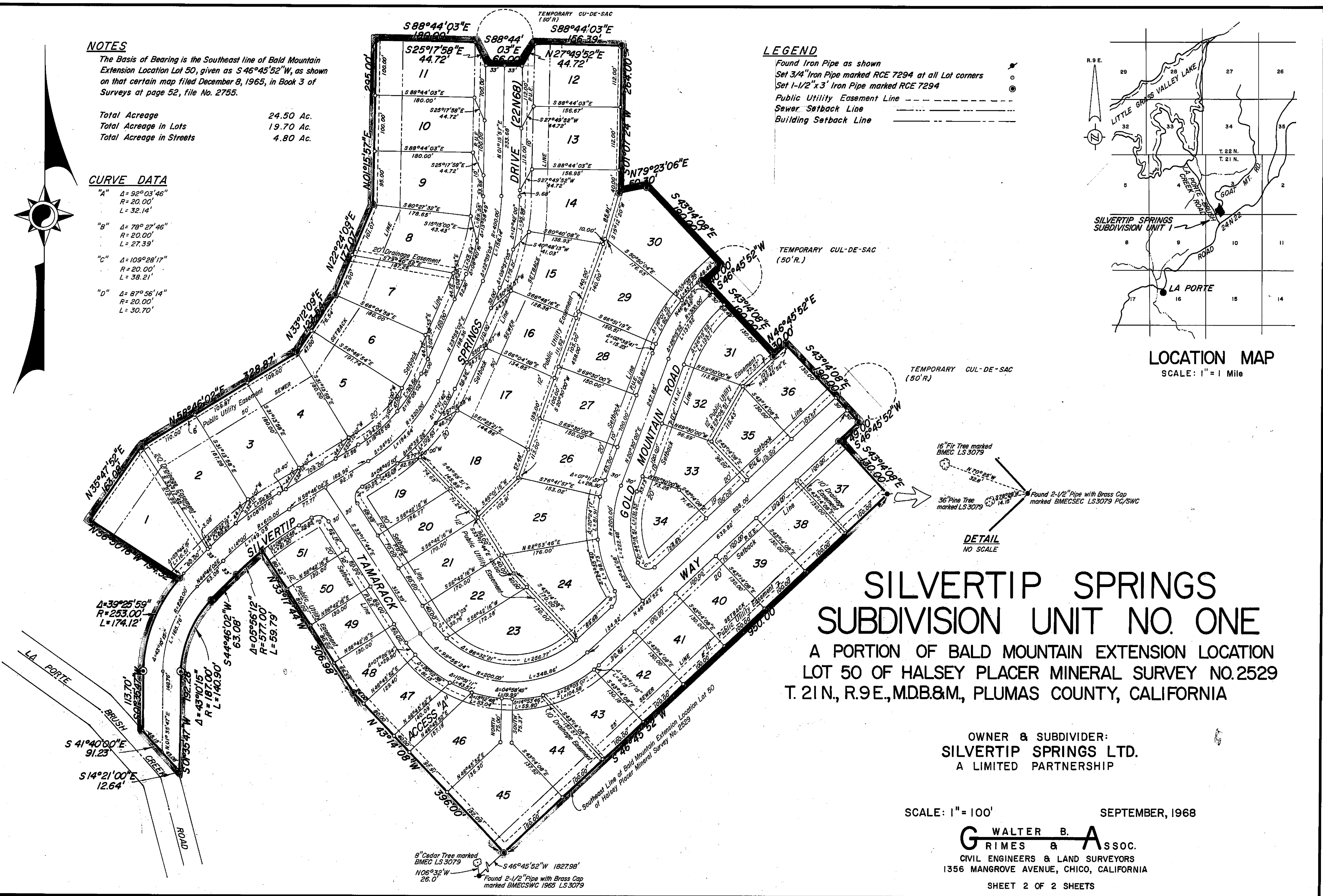
LEGEND

- Found Iron Pipe as shown
- Set 3/4" Iron Pipe marked RCE 7294 at all Lot corners
- Set 1-1/2"x3" Iron Pipe marked RCE 7294
- Public Utility Easement Line
- Sewer Setback Line
- Building Setback Line



LOCATION MAP

SCALE: 1" = 1 Mile



16" Fir Tree marked BMEC LS 3079
 36" Pine Tree marked LS 3079
 Found 2-1/2" Pipe with Brass Cap marked BMECSEC LS3079 PC/SWC

DETAIL NO SCALE

SILVERTIP SPRINGS SUBDIVISION UNIT NO. ONE

A PORTION OF BALD MOUNTAIN EXTENSION LOCATION LOT 50 OF HALSEY PLACER MINERAL SURVEY NO. 2529 T. 21 N., R. 9 E., M.D.B.&M., PLUMAS COUNTY, CALIFORNIA

OWNER & SUBDIVIDER:
SILVERTIP SPRINGS LTD.
A LIMITED PARTNERSHIP

SCALE: 1" = 100'

SEPTEMBER, 1968

G WALTER B. **A**SSOC.
RIMES &
CIVIL ENGINEERS & LAND SURVEYORS
1356 MANGROVE AVENUE, CHICO, CALIFORNIA

SHEET 2 OF 2 SHEETS