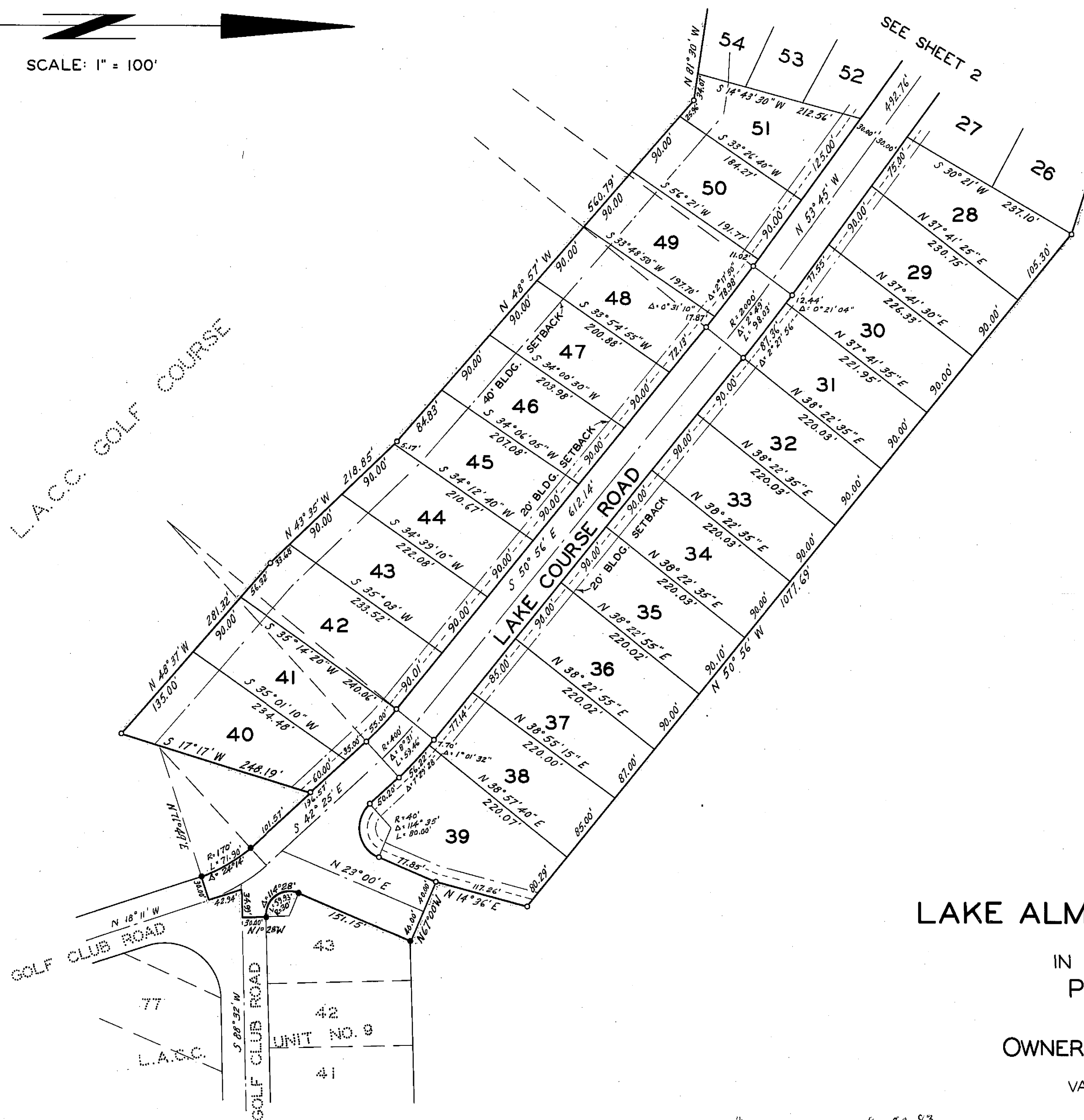


SCALE: 1" = 100'

L.A.C.C. GOLF COURSE



LEGEND

- FOUND IRON PIPE MONUMENT ON SUBDIVISION BOUNDARIES OF UNIT 9
- SET 1" IRON PIPE TAGGED "L.S. 3202" FOR ANGLE AND CURVE POINTS
- SET 1/2" IRON PIPE TAGGED "L.S. 3202" FOR ALL LOT CORNERS
- 'AS NOTED' BUILDING SETBACK LINES
- 10' P.U.E. (PUBLIC UTILITIES EASEMENT)

LAKE ALMANOR COUNTRY CLUB UNIT NO. 14

IN SECTION 25, T28N, R7E, MDB & M
PLUMAS COUNTY, CALIFORNIA

SCALE: 1" = 100'

OWNER & SUBDIVIDER: EDWARD A. CLIFFORD

VANDENBERG & SIMPSON, ENGINEERS & SURVEYORS
SUSANVILLE, CALIFORNIA