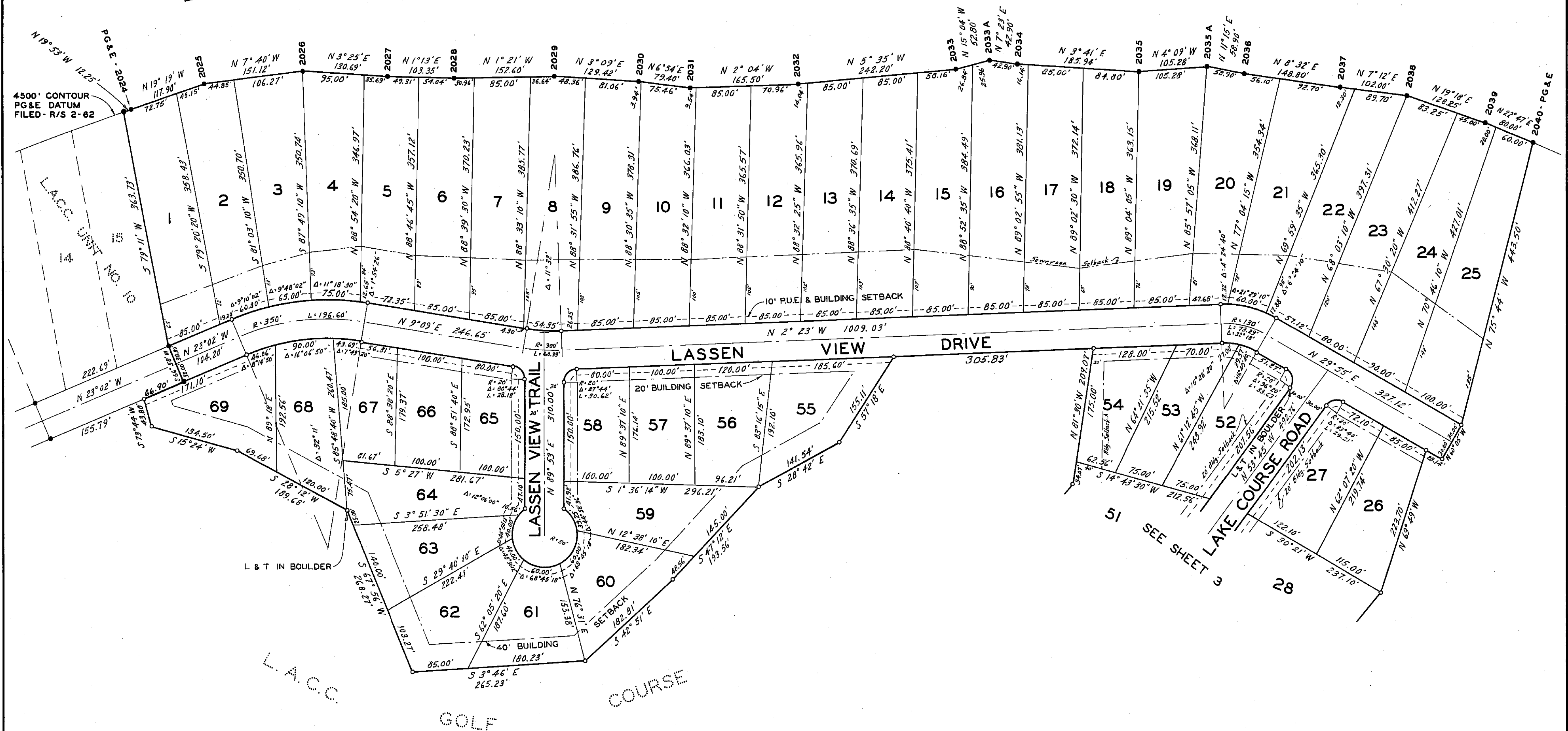


LAKE ALMANOR



LEGEND

- FOUND IRON PIPE MONUMENT ON SUBDIVISION BOUNDARIES OF UNIT 10, OR, FOUND PG&E IRON PIN ALONG 4500' CONTOUR LINE
- SET 1/2" IRON PIPE TAGGED "L.S. 3202" (EXCEPT AS NOTED) FOR ANGLE AND CURVE POINTS
- SET 1/2" IRON PIPE TAGGED "L.S. 3202" FOR ALL LOT CORNERS
- 'AS NOTED' BUILDING SETBACK LINES
- 10' P.U.E. (PUBLIC UTILITIES EASEMENT)

SCALE: 1" = 100'

LAKE ALMANOR COUNTRY CLUB UNIT NO. 14

IN SECTION 25, T28N, R7E, MDB & M
 PLUMAS COUNTY, CALIFORNIA
 SCALE: 1" = 100'

OWNER & SUBDIVIDER: EDWARD A. CLIFFORD

VANDENBERG & SIMPSON, ENGINEERS & SURVEYORS
 SUSANVILLE, CALIFORNIA

REC. IN BOOK 3 OF MAPS AT PAGE 81-82-83

SHEET 2 OF 3