

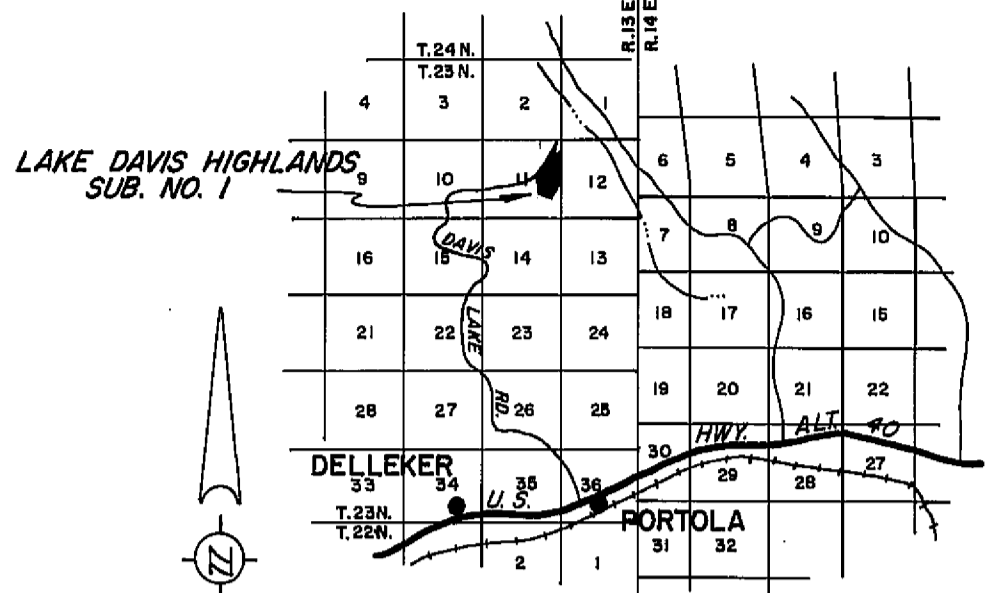
CURVE DATA

- "A" Δ = 90°00'
R = 20.00'
L = 31.42'
- "B" Δ = 88°52'42"
R = 20.00'
L = 31.02'
- "C" Δ = 88°52'42"
R = 20.00'
L = 31.02'
- "D" Δ = 87°34'45"
R = 20.00'
L = 30.57'
- "E" Δ = 92°18'38"
R = 20.00'
L = 32.22'
- "F" Δ = 85°04'47"
R = 20.00'
L = 29.70'
- "G" Δ = 95°09'19"
R = 20.00'
L = 33.22'
- "H" Δ = 80°26'31"
R = 20.00'
L = 28.08'
- "I" Δ = 99°07'11"
R = 20.00'
L = 33.94'
- "J" Δ = 37°24'01"
R = 20.00'
L = 13.06'
- "K" Δ = 55°40'41"
R = 20.00'
L = 19.44'
- "L" Δ = 78°13'54"
R = 20.00'
L = 27.31'
- "M" Δ = 102°19'53"
R = 20.00'
L = 35.72'

NOTES

THE BASIS OF BEARING IS THE NORTH LINE OF SECTION 11, T.23N., R.13E., M.D.B. & M., GIVEN AS N88°56'20"E ON THAT CERTAIN AMENDED RECORD OF SURVEY MAP FILED DECEMBER 26, 1967, IN BOOK 3 OF RECORD OF SURVEYS AT PAGE 108, RECORDING NO. 2695, IN THE PLUMAS COUNTY OFFICIAL RECORDS.

TOTAL ACREAGE	59.20 AC.
TOTAL ACREAGE IN LOTS	47.29 AC.
TOTAL ACREAGE IN STREETS	11.91 AC.



LOCATION MAP
SCALE: 1"=2-1/2 Miles

LEGEND

- FOUND 3/4" IRON PIPE MARKED RCE 7294
- SET 3/4" IRON PIPE MARKED RCE 7294 AT ALL LOT CORNERS
- SET 1-1/2" IRON PIPE MARKED RCE 7294
- PUBLIC UTILITY EASEMENT LINE
- BUILDING SETBACK LINE
- P.U.E.

**LAKE DAVIS HIGHLANDS
SUBDIVISION UNIT NO. 1**

A PORTION OF SECTIONS 11 & 12,
T. 23N., R. 13E., M.D.B. & M.
PLUMAS COUNTY, CALIFORNIA

OWNER & SUBDIVIDER
BIDWELL LAND AND DEVELOPMENT CO.

SCALE: 1"=100'

MAY, 1968

G. WALTER B. GRIMES ASSOC.
CIVIL ENGINEERS & LAND SURVEYORS
1356 MANGROVE AVENUE, CHICO, CALIFORNIA

SHEET 2 OF 3 SHEETS