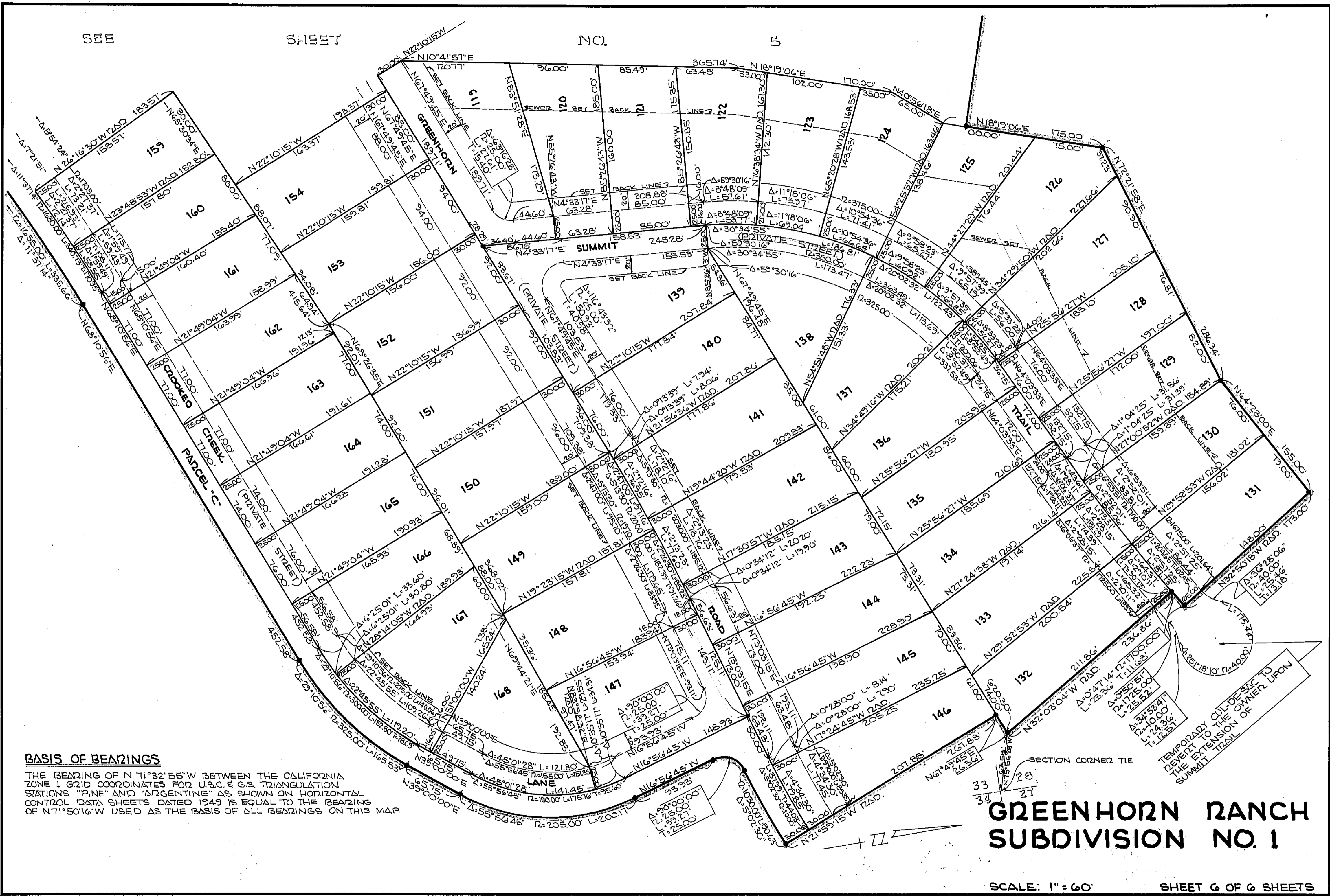


SEE

SHEET

NO.

5



BASIS OF BEARINGS

THE BEARING OF N 71°32'55\" W BETWEEN THE CALIFORNIA ZONE 1 GRID COORDINATES FOR U.S.C. & G.S. TRIANGULATION STATIONS "PINE" AND "ARGENTINE" AS SHOWN ON HORIZONTAL CONTROL DATA SHEETS DATED 1949 IS EQUAL TO THE BEARING OF N 71°50'16\" W USED AS THE BASIS OF ALL BEARINGS ON THIS MAP

**GREENHORN RANCH
SUBDIVISION NO. 1**

SCALE: 1" = 60' SHEET 6 OF 6 SHEETS

TEMPORARY CUL-DE-SAC TO BE EXTENDED UPON SUMMIT TRAIL