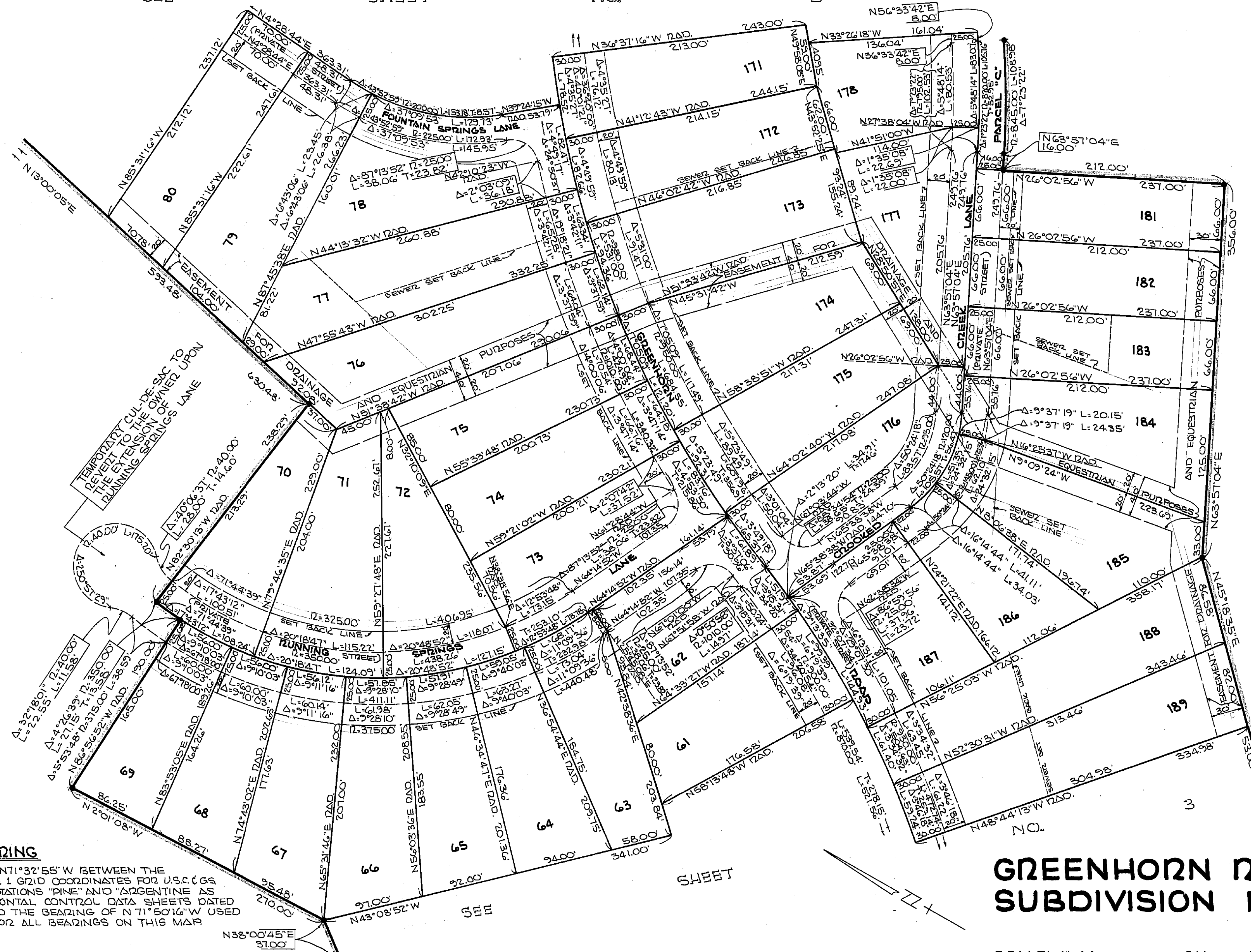


SEE SHEET NO. 5



**BASIS OF BEARING**

THE BEARING OF N71°32'55" W BETWEEN THE CALIFORNIA ZONE 1 GRID COORDINATES FOR U.S.C.G.S TRIANGULATION STATIONS "PINE" AND "ARGENTINE" AS SHOWN ON HORIZONTAL CONTROL DATA SHEETS DATED 1949 IS EQUAL TO THE BEARING OF N71°50'16" W USED AS THE BASIS FOR ALL BEARINGS ON THIS MAP

**GREENHORN RANCH  
SUBDIVISION NO. 1**

SCALE: 1"=60'  
SHEET 4 OF 6 SHEETS