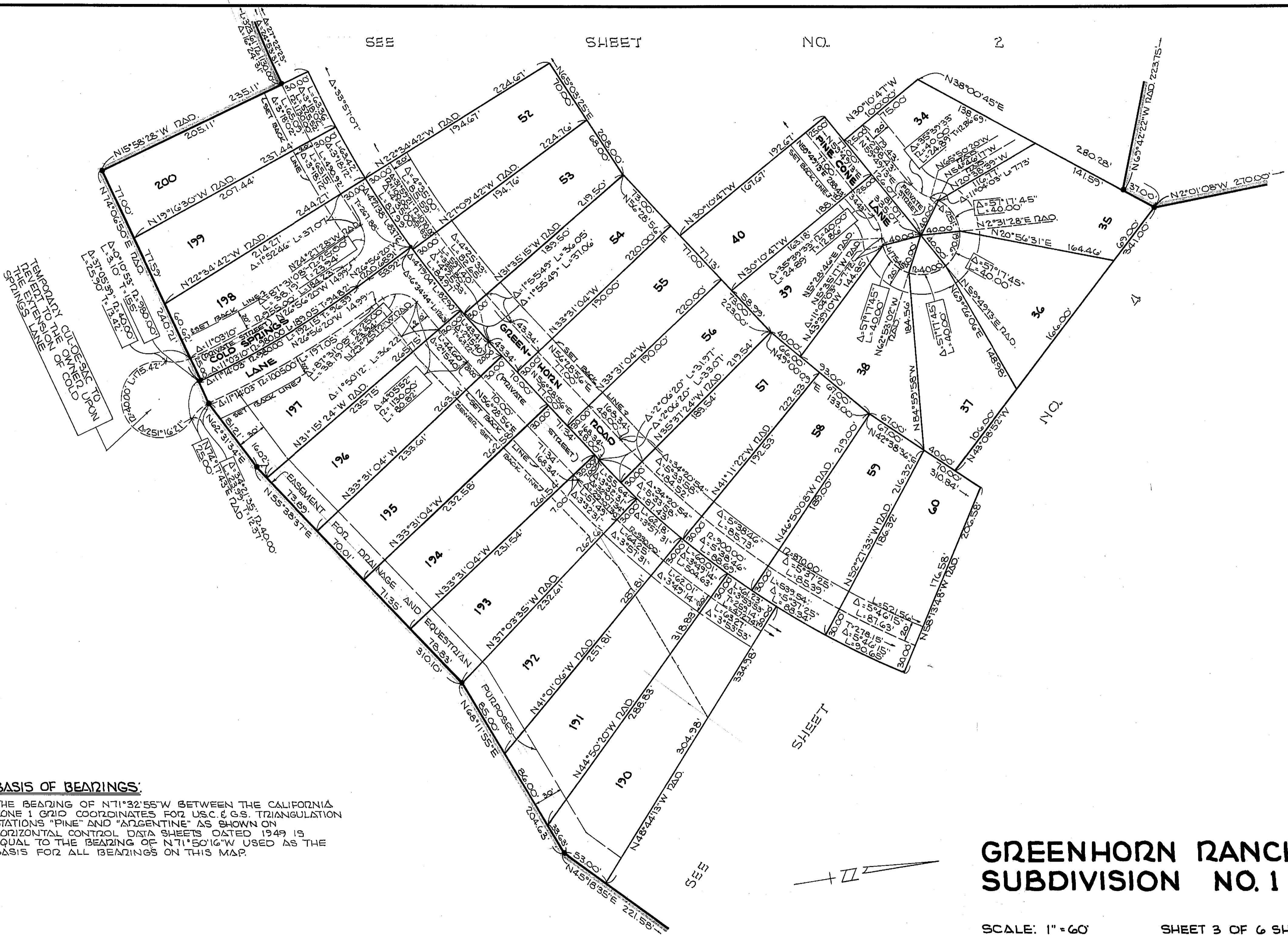


SEE

SHEET

NO.

2



**BASIS OF BEARINGS:**

THE BEARING OF N71°32'55"W BETWEEN THE CALIFORNIA ZONE 1 GRID COORDINATES FOR USC & G.S. TRIANGULATION STATIONS "PINE" AND "ARGENTINE" AS SHOWN ON HORIZONTAL CONTROL DATA SHEETS DATED 1949 IS EQUAL TO THE BEARING OF N71°50'16"W USED AS THE BASIS FOR ALL BEARINGS ON THIS MAP.

**GREENHORN RANCH  
SUBDIVISION NO. 1**

SCALE: 1" = 60'

SHEET 3 OF 6 SHEETS