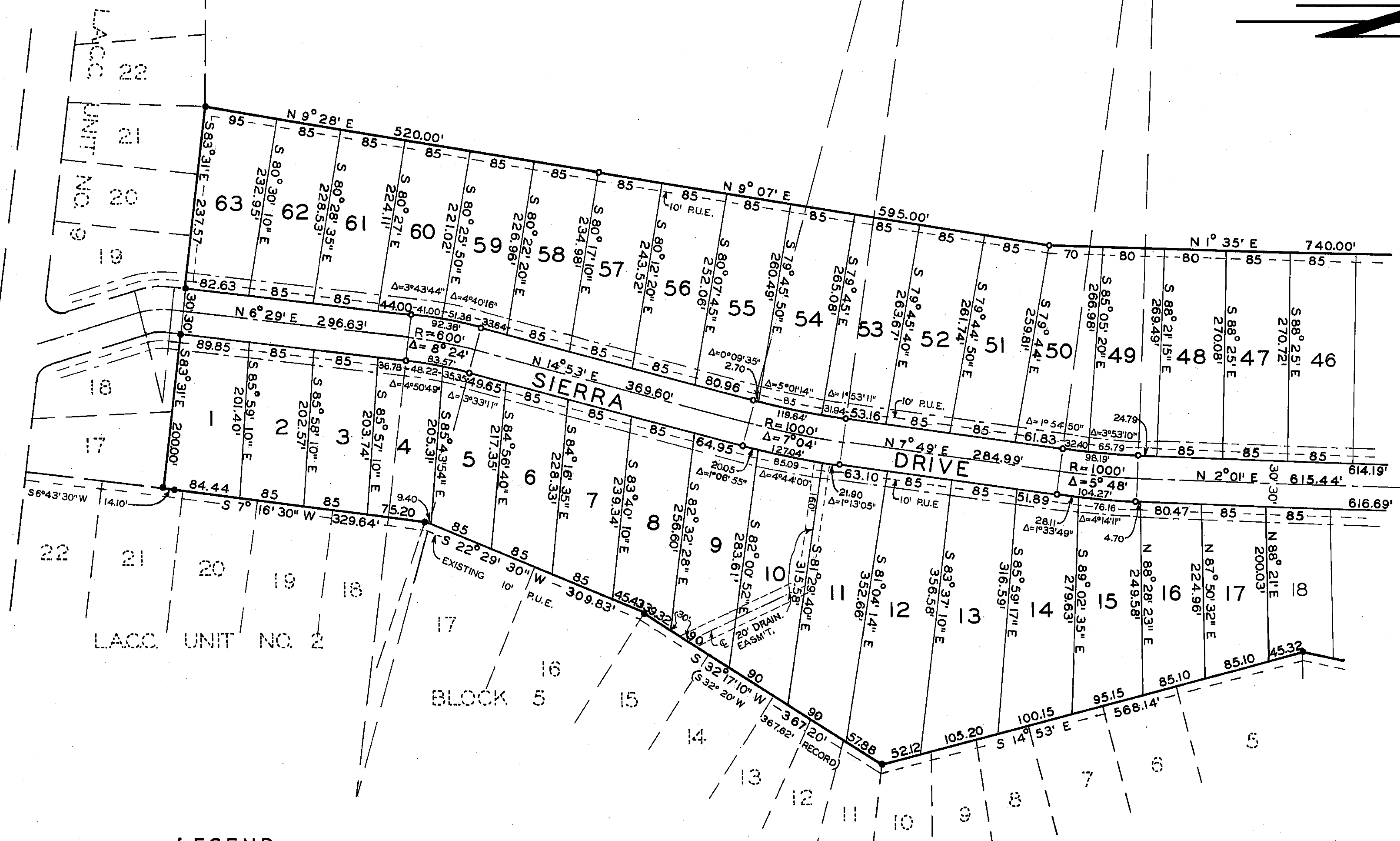




1" = 100'



SEE SHEET 3

LEGEND

- FOUND IRON PIPE MONUMENT ON SUBDIVISION BOUNDARIES OF UNITS 2, 9, OR 12.
- SET 1" IRON PIPE, TAGGED "L.S. 3202" FOR ANGLE AND CURVE POINTS.
- SET 1/2" IRON PIPE, TAGGED "L.S. 3202" AT ALL LOT CORNERS.
- 20' BUILDING SETBACK LINE.
- 5' OR 10' R.U.E., PUBLIC UTILITY EASEMENT.

LAKE ALMANOR COUNTRY CLUB UNIT NO. 11
 IN SECTION 25, T28N, R7 E, MDB & M
PLUMAS COUNTY, CALIFORNIA
 SCALE - 1"=100'

OWNER & SUBDIVIDER: EDWARD A. CLIFFORD

VANDEMBERG & SIMPSON, ENGINEERS & SURVEYORS
SUSANVILLE, CALIFORNIA

SHEET 2 OF 3