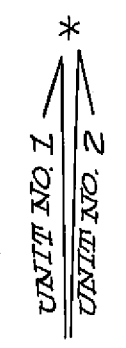


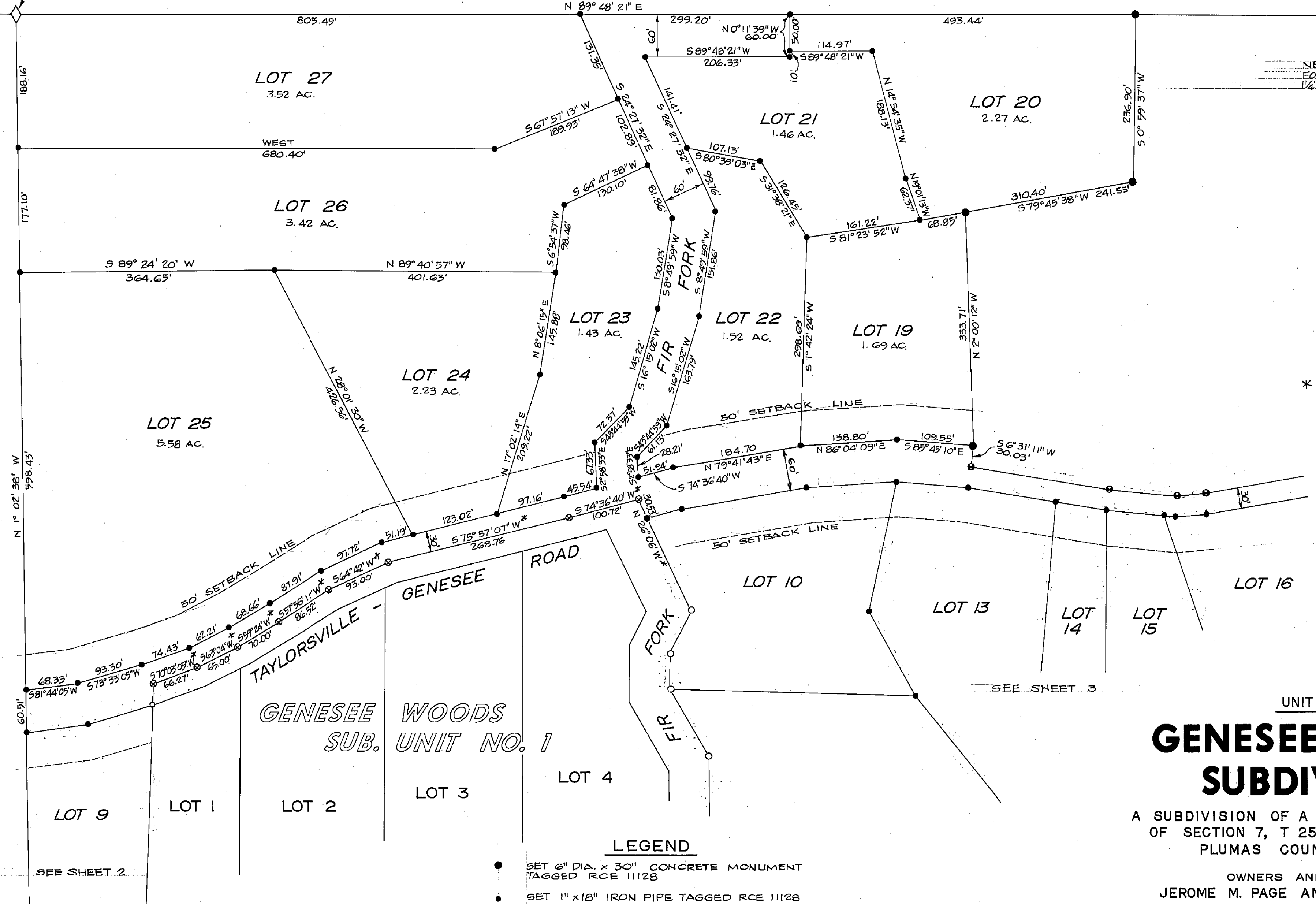
N 1/4 CORNER SECTION 7
FOUND ROCK MOUND, SET 1 1/4"
IRON PIPE TAGGED R.C.E. 11128

NE CORNER SECTION 7
FOUND STONE MOUND, SET
1 1/4" IRON PIPE TAGGED R.C.E. 11128



BASIS OF BEARINGS:
TRUE NORTH (CELESTIAL)

* MAP NORTH FOR UNIT NO. 2
IS 0° 06' EAST OF MAP NORTH
FOR UNIT NO. 1.



SEE SHEET 2

SEE SHEET 3

GENESEE WOODS
SUB. UNIT NO. 1

UNIT NO. 2
**GENESEE WOODS
SUBDIVISION**

A SUBDIVISION OF A PORTION OF THE NE 1/4
OF SECTION 7, T 25 N, R 11 E, MDB & M
PLUMAS COUNTY, CALIFORNIA

OWNERS AND SUBDIVIDERS
JEROME M. PAGE AND EUGENIA L. PAGE

SCALE 1" = 100' AUGUST 1967

RINGEL & ASSOCIATES, INC.
ENGINEERS — (PA) — SURVEYORS
CHICO CALIFORNIA

LEGEND

- SET 6" DIA. x 30" CONCRETE MONUMENT TAGGED RCE 11128
- SET 1" x 18" IRON PIPE TAGGED RCE 11128
- SET 1/2" x 18" IRON ROD WITH BRASS CAP
- FOUND 6" DIA. CONCRETE MONUMENT TAGGED RCE 11128
- FOUND 1" IRON PIPE TAGGED RCE 11128
- ⊙ FOUND IRON ROD WITH BRASS CAP