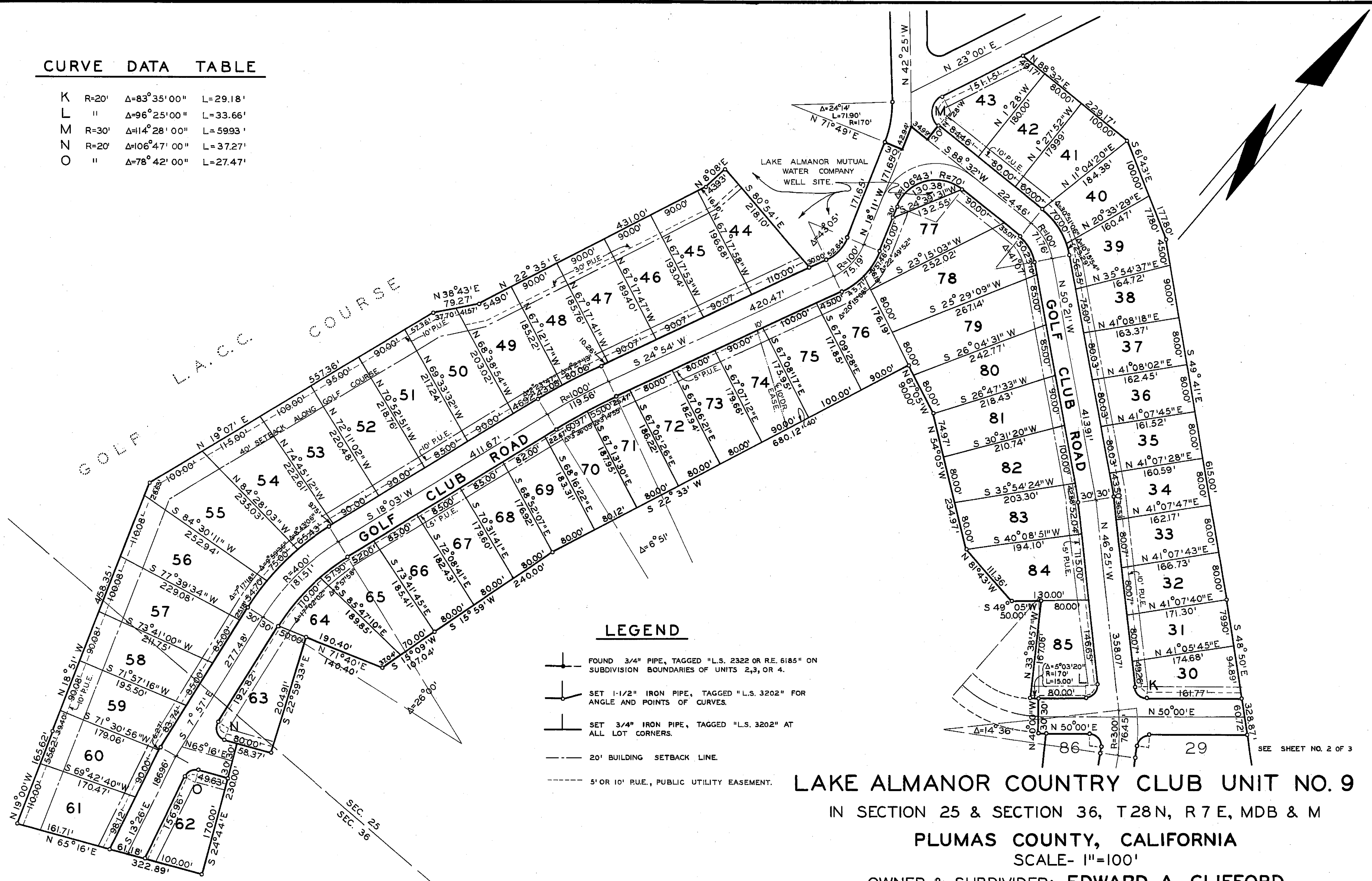


CURVE DATA TABLE

K	R=20'	Δ=83°35'00"	L=29.18'
L	"	Δ=96°25'00"	L=33.66'
M	R=30'	Δ=14°28'00"	L=59.93'
N	R=20'	Δ=106°47'00"	L=37.27'
O	"	Δ=78°42'00"	L=27.47'



LEGEND

- FOUND 3/4" PIPE, TAGGED "L.S. 2322 OR R.E. 6185" ON SUBDIVISION BOUNDARIES OF UNITS 2,3, OR 4.
- SET 1-1/2" IRON PIPE, TAGGED "L.S. 3202" FOR ANGLE AND POINTS OF CURVES.
- SET 3/4" IRON PIPE, TAGGED "L.S. 3202" AT ALL LOT CORNERS.
- 20' BUILDING SETBACK LINE.
- 5' OR 10' RUE, PUBLIC UTILITY EASEMENT.

LAKE ALMANOR COUNTRY CLUB UNIT NO. 9

IN SECTION 25 & SECTION 36, T28N, R7E, MDB & M

PLUMAS COUNTY, CALIFORNIA

SCALE- 1"=100'

OWNER & SUBDIVIDER: EDWARD A. CLIFFORD

VANDEMBERG & SIMPSON, ENGINEERS & SURVEYORS  
SUSANVILLE, CALIFORNIA

SHEET 3 OF 3

Book \_\_\_\_\_ Maps, page \_\_\_\_\_