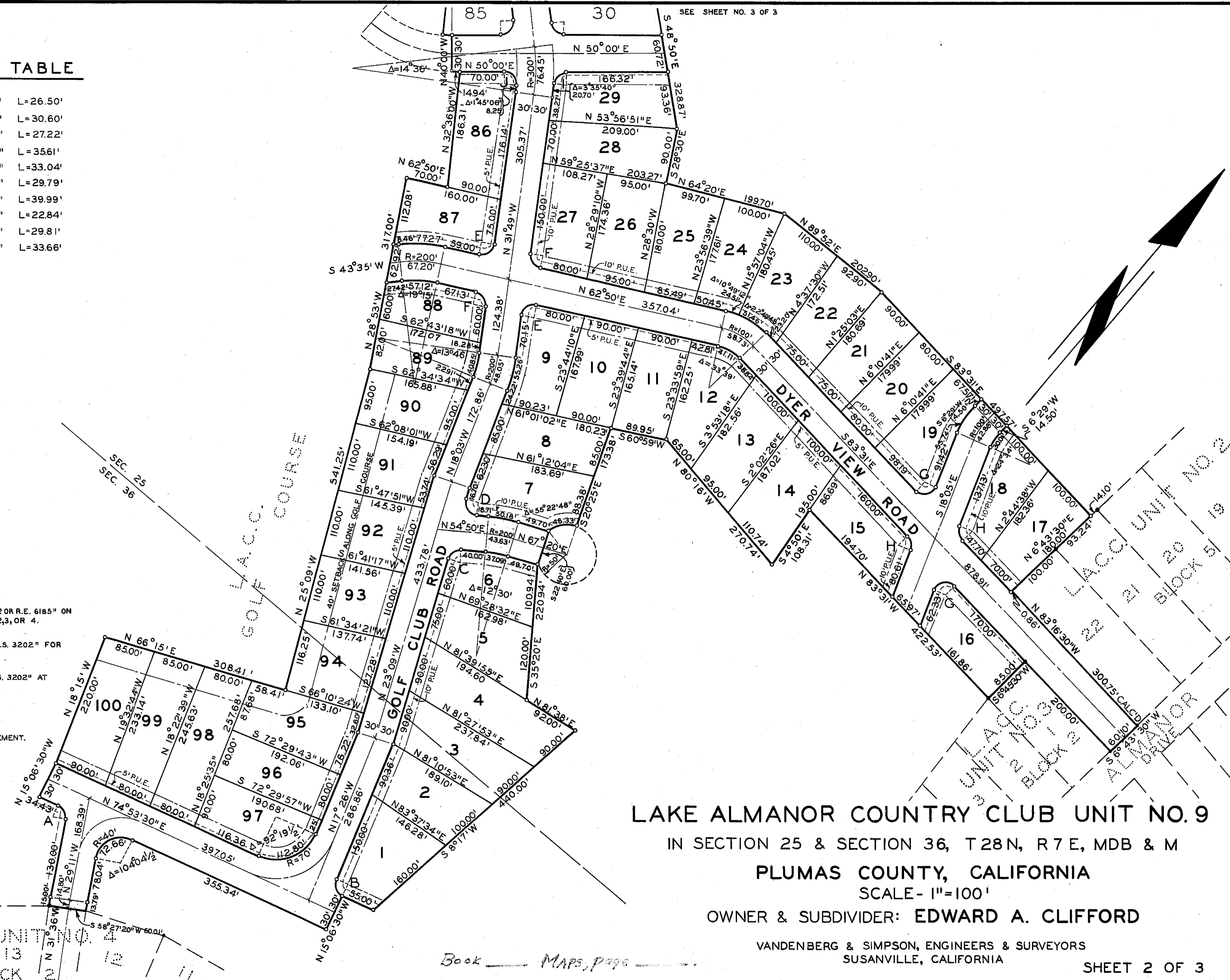


CURVE DATA TABLE

A	R=20'	Δ=75°55'30"	L=26.50'
B	R=20'	Δ=87°40'30"	L=30.60'
C	"	Δ=77°59'00"	L=27.22'
D	"	Δ=102°01'00"	L=35.61'
E	"	Δ=94°39'00"	L=33.04'
F	"	Δ=85°21'00"	L=29.79'
G	"	Δ=114°34'00"	L=39.99'
H	"	Δ=65°26'00"	L=22.84'
I	"	Δ=85°24'40"	L=29.81'
J	"	Δ=96°25'54"	L=33.66'

LEGEND

- FOUND 3/4" PIPE, TAGGED "L.S. 2322 OR R.E. 6185" ON SUBDIVISION BOUNDARIES OF UNITS 2,3, OR 4.
- SET 1-1/2" IRON PIPE, TAGGED "L.S. 3202" FOR ANGLE AND POINTS OF CURVES.
- SET 3/4" IRON PIPE, TAGGED "L.S. 3202" AT ALL LOT CORNERS.
- 20' BUILDING SETBACK LINE.
- 5' OR 10' P.U.E., PUBLIC UTILITY EASEMENT.



LAKE ALMANOR COUNTRY CLUB UNIT NO. 9

IN SECTION 25 & SECTION 36, T28N, R7E, MDB & M

PLUMAS COUNTY, CALIFORNIA

SCALE - 1"=100'

OWNER & SUBDIVIDER: EDWARD A. CLIFFORD

VANDEMBERG & SIMPSON, ENGINEERS & SURVEYORS
SUSANVILLE, CALIFORNIA

Book _____ MAPS, PAGE _____

3M53