

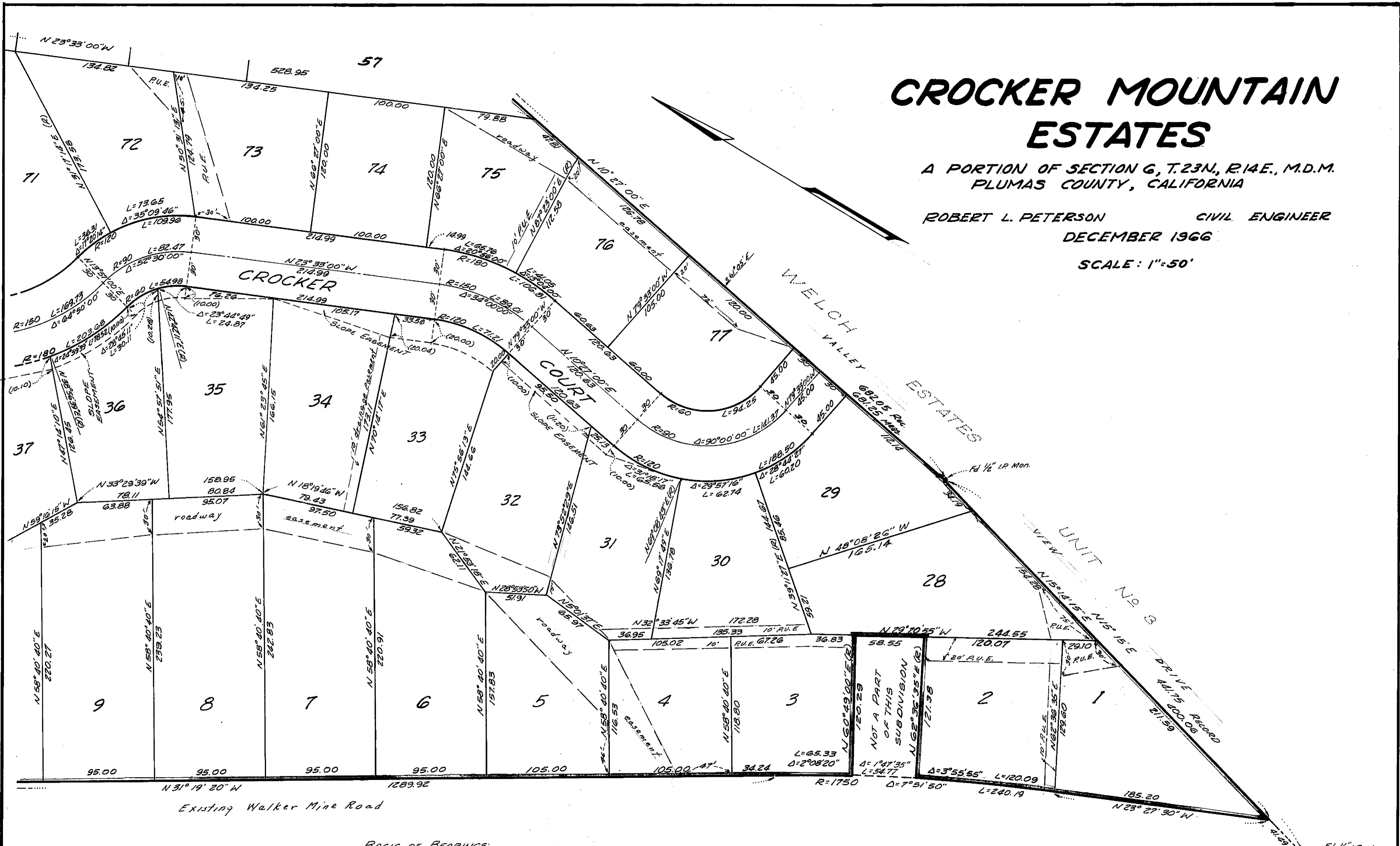
CROCKER MOUNTAIN ESTATES

A PORTION OF SECTION 6, T.23N., R.14E., M.D.M. PLUMAS COUNTY, CALIFORNIA

ROBERT L. PETERSON CIVIL ENGINEER

DECEMBER 1966

SCALE: 1"=50'



BASIS OF BEARINGS:

The bearing, N10° 27' E of the west boundary of Welch Estates Unit No. 3 as shown on the map filed at Book 2 of Maps, pages 44, 45, and 46, Plumas County Records, was used as basis of bearings shown hereon.

NOTE:

Iron Pipe Monuments, 1/2" I.D. are set at each lot corner and at all points of curve, except where slope easements exist, monuments are set on the easement line.