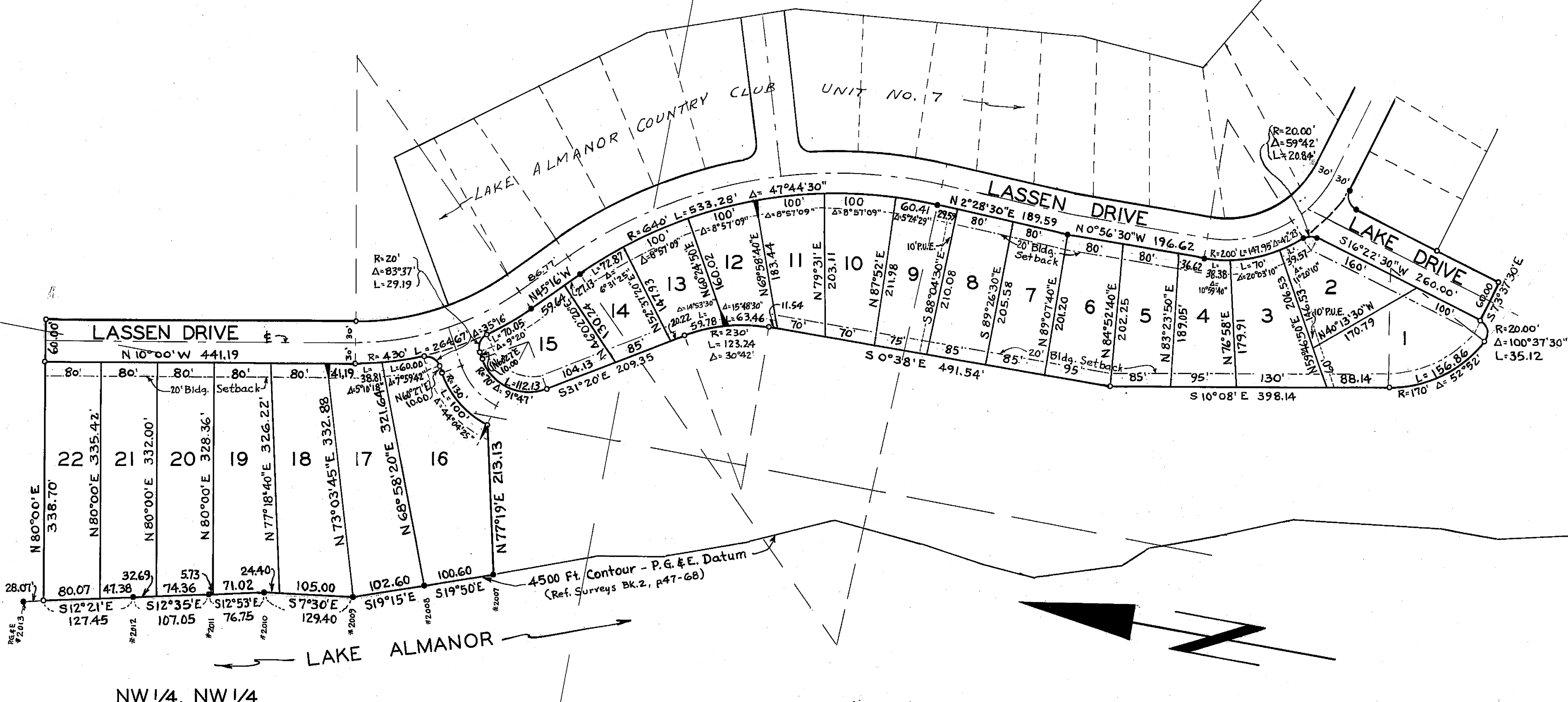


NE 1/4, NW 1/4, SEC. 36, T28N, R7E, MDB & M

SE 1/4, NW 1/4



NW 1/4, NW 1/4

LEGEND

- Indicates 5'x20' P.U.E. Anchor easement, radial, or along lot lines.
 - 20' Building Setback line.
 - Found 3/4" pipe, tagged "L.S. 2322" along Lassen Drive, or, found "P.G.&E." Iron pin along 4500 Ft. Contour Line.
 - Set 1" Iron pipe, tagged "L.S. 3202" for angle and points of curves.
 - Set 1" Iron pipe, tagged "L.S. 3202" at all Lot corners.
- Basis of BEARINGS is the recorded map of Lake Almanor Country Club Unit No. 7.

LAKE ALMANOR COUNTRY CLUB UNIT NO. 8
 IN THE W 1/2 OF SECTION 36, T28N, R7E, MDB & M
 PLUMAS COUNTY, CALIFORNIA
 SCALE: 1"=100'
 OWNER & SUBDIVIDER: EDWARD A. CLIFFORD
 VANDENBERG & SIMPSON, ENGINEERS & SURVEYORS
 SUSANVILLE, CALIFORNIA
 SHEET 2 OF 2