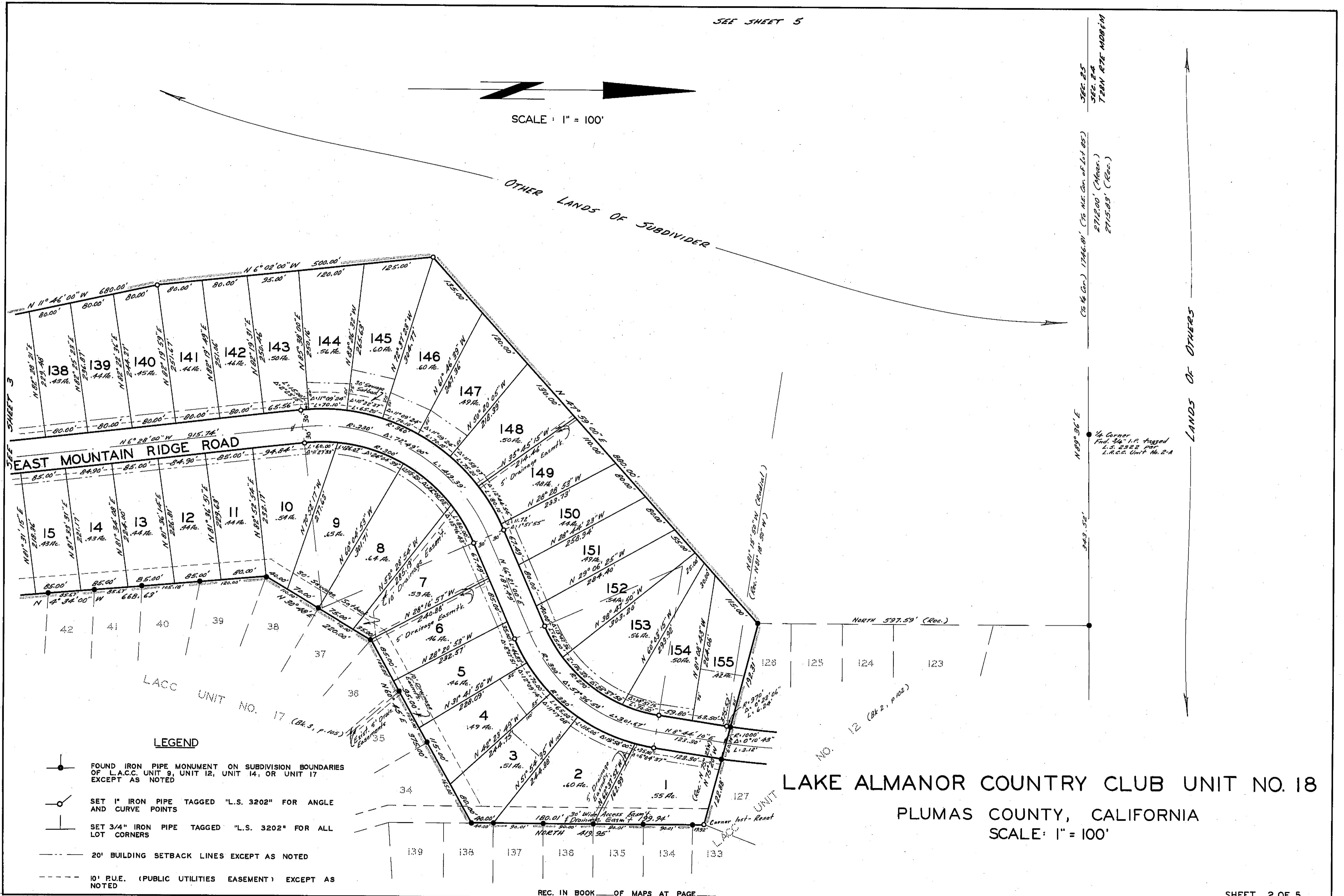


SEE SHEET 5

SCALE: 1" = 100'

OTHER LANDS OF SUBDIVIDER

LANDS OF OTHERS



SEE 25
SEE 24
T28N R7E M08&1M

(To N.E. Cor. of Lot 85)
2712.00' (Meas.)
2715.83' (Rec.)

1/4 Corner
Fnd. 34" I.P. tagged
L.S. 2522 for
L.A.C.C. Unit No. 2-A

N 89° 36' E
249.52'

NORTH 597.59' (Rec.)

NO 12 (Bk 2, p. 102)

LAKE ALMANOR COUNTRY CLUB UNIT NO. 18
 PLUMAS COUNTY, CALIFORNIA
 SCALE: 1" = 100'

LEGEND

- FOUND IRON PIPE MONUMENT ON SUBDIVISION BOUNDARIES OF L.A.C.C. UNIT 9, UNIT 12, UNIT 14, OR UNIT 17 EXCEPT AS NOTED
- SET 1" IRON PIPE TAGGED "L.S. 3202" FOR ANGLE AND CURVE POINTS
- ⊥ SET 3/4" IRON PIPE TAGGED "L.S. 3202" FOR ALL LOT CORNERS
- 20' BUILDING SETBACK LINES EXCEPT AS NOTED
- - - 10' P.U.E. (PUBLIC UTILITIES EASEMENT) EXCEPT AS NOTED

REC. IN BOOK OF MAPS AT PAGE

SHEET 2 OF 5

70-44

3M115