

I, EDWARD A. CLIFFORD, HEREBY CERTIFY THAT I AM THE ONLY PERSON HAVING ANY RECORD TITLE INTEREST IN AND TO THE REAL PROPERTY INCLUDED WITHIN THE SUBDIVISION SHOWN UPON THIS MAP, AND THE ONLY PERSON WHOSE CONSENT IS NECESSARY TO PASS A CLEAR TITLE TO SAID PROPERTY, AND I CONSENT TO THE MAKING AND RECORDING OF THIS MAP.

I OFFER FOR DEDICATION AND HEREBY SO DEDICATE FOR SPECIFIC PURPOSES THE RIGHTS OF WAY AND EASEMENTS FOR WATER LINES AND FOR POLES AND OVER-HEAD AND UNDERGROUND WIRES, ON, OVER AND UNDER THOSE STRIPS OF LAND DESIGNATED "PUBLIC UTILITIES EASEMENTS." I ALSO RESERVE A STRIP OF LAND ACROSS THE FRONT OF ALL LOTS, AS SHOWN ON THIS MAP BY LINES LABELED "SET BACK LINES", SAID LAND TO BE KEPT FREE AND OPEN OF BUILDINGS AND BUILDING OVERHANG TO A MINIMUM DEPTH AS INDICATED.

THE STREETS AND ROADS AS SHOWN ON THIS MAP ARE NOT OFFERED FOR DEDICATION, ALSO, OTHER EASEMENTS AS SHOWN ON THIS MAP ARE RESERVED FOR SPECIFIC USES AS NOTED.

Edward A. Clifford
EDWARD A. CLIFFORD

STATE OF WASHINGTON
COUNTY OF KING

ON THIS MAY 19 1971, BEFORE ME, FRANCIS HOLLAND A NOTARY PUBLIC IN AND FOR SAID COUNTY RESIDING THEREIN, DULY COMMISSIONED AND SWORN, PERSONALLY APPEARED EDWARD A. CLIFFORD KNOWN TO ME TO BE THE PERSON WHOSE NAME IS SIGNED TO THE WITHIN INSTRUMENT, AND ACKNOWLEDGED TO ME THAT HE EXECUTED THE SAME.
IN WITNESS WHEREOF I HAVE HEREUNTO SET MY HAND AND AFFIXED MY SEAL THE DAY AND YEAR IN THIS CERTIFICATE FIRST ABOVE WRITTEN.

Francis Holland
NOTARY
MY COMMISSION EXPIRES MARCH 27, 1972

I, PAUL E. SIMPSON, HEREBY CERTIFY THAT I AM A LICENSED CIVIL ENGINEER AND LAND SURVEYOR OF THE STATE OF CALIFORNIA, THAT THIS MAP CONSISTING OF 5 SHEETS CORRECTLY SHOWS ALL OF THE MONUMENTS WHICH EXIST AS SHOWN AND ARE SUFFICIENT TO ENABLE THIS SURVEY TO BE RETRACED. SURVEY MADE IN MAY, 1971

Paul E. Simpson
PAUL E. SIMPSON R.C.E. 18535
REGISTERED PROFESSIONAL ENGINEER
No. 18535
CIVIL
STATE OF CALIFORNIA

Paul E. Simpson
PAUL E. SIMPSON R.C.E. 3202
LICENSED LAND SURVEYOR
No. 3202
STATE OF CALIFORNIA

I, THE UNDERSIGNED, PLUMAS COUNTY HEALTH OFFICER, CERTIFY THAT A PROPER AND ADEQUATE SEWAGE DISPOSAL SYSTEM IS FEASIBLE ON EACH LOT SHOWN HEREON, IN CONJUNCTION WITH THE AVAILABLE PUBLIC WATER SUPPLY.

Stephen L. Christenson M.D.
STEPHEN L. CHRISTENSON M.D., PLUMAS COUNTY HEALTH OFFICER

I, THE UNDERSIGNED, PLUMAS COUNTY ROAD COMMISSIONER CERTIFY THAT THE STREETS AND DRAINAGE SHOWN HEREON ARE IN COMPLIANCE WITH PLUMAS COUNTY REGULATIONS FOR PRIVATELY OWNED ROADS.

Lawrence J. Brock
LAWRENCE J. BROCK, PLUMAS COUNTY ROAD COMMISSIONER
R.C.E. 13528

ROADS SHOWN HEREON ARE PRIVATE ROADS NOT SUBJECT TO COUNTY IMPROVEMENT OR MAINTENANCE.

I, THE UNDERSIGNED, COUNTY SURVEYOR OF THE COUNTY OF PLUMAS, STATE OF CALIFORNIA, DO HEREBY CERTIFY THAT I HAVE EXAMINED THE FINAL MAP OF LAKE ALMANOR COUNTRY CLUB UNIT NO. 18, THAT IT IS SUBSTANTIALLY THE SAME AS APPEARED ON THE TENTATIVE MAP ON FILE AND ANY APPROVED ALTERATIONS THEREOF, THAT ALL THE PROVISIONS OF THE SUBDIVISION MAP ACT OF THE STATUTES OF CALIFORNIA, AND ANY LOCAL ORDINANCES APPLICABLE AT THE TIME OF APPROVAL OF SAID TENTATIVE MAP HAVE BEEN COMPLIED WITH, AND I AM SATISFIED THAT THE MAP IS TECHNICALLY CORRECT.

Darrell P. Payne
DARRELL P. PAYNE R.C.E. 8596
PLUMAS COUNTY SURVEYOR

I, THE UNDERSIGNED, COUNTY TAX COLLECTOR OF THE COUNTY OF PLUMAS, STATE OF CALIFORNIA, DO HEREBY CERTIFY THAT THERE ARE NO TAX LIENS AGAINST LAKE ALMANOR COUNTRY CLUB UNIT NO. 18 AS HEREIN SET FORTH, OR UNPAID STATE, COUNTY, MUNICIPAL, OR LOCAL TAXES, OR SPECIAL ASSESSMENTS COLLECTED AS TAXES, EXCEPT TAXES OR ASSESSMENTS NOT YET PAYABLE, TAXES OR ASSESSMENTS WHICH ARE A LIEN BUT NOT YET PAYABLE, ARE ESTIMATED TO BE IN THE AMOUNT OF \$1900.00.

Douglas S. Redstreak
DOUGLAS S. REDSTREAK
PLUMAS COUNTY TAX COLLECTOR

I DO HEREBY CERTIFY THAT ON THE 7th DAY OF June, 1971, THE PLUMAS COUNTY BOARD OF SUPERVISORS OFFICIALLY APPROVED THE SUBDIVISION MAPS OF LAKE ALMANOR COUNTRY CLUB UNIT NO. 18. THE RECEIPT OF SATISFACTORY SECURITY IN THE AUDITORS' ESTIMATED AMOUNT OF \$1900.00 TO INSURE PAYMENT OF TAXES WHICH ARE A LIEN, BUT NOT YET PAYABLE, WAS ACKNOWLEDGED.

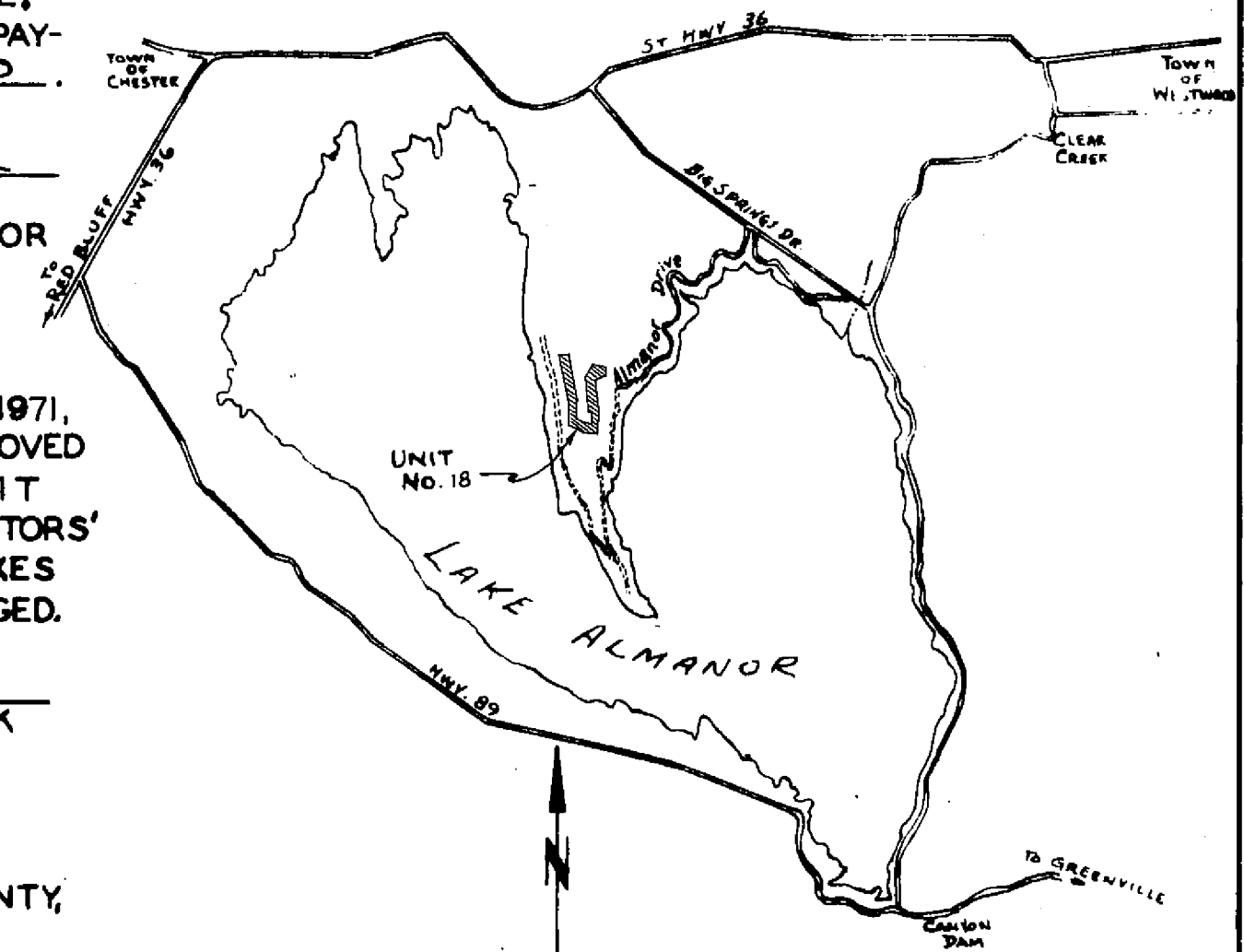
Raynelle Slaten
RAYNELLE SLATEN, PLUMAS COUNTY CLERK

5489
RECORDED IN THE OFFICE OF THE RECORDER OF PLUMAS COUNTY, STATE OF CALIFORNIA, AT THE REQUEST OF PLUMAS COUNTY ABSTRACT AND TITLE CO. THIS 10th DAY OF June, 1971 AT 52 MINUTES PAST 2 O'CLOCK PM IN MAP BOOK 3 AT PAGES 114 AND 118.

Dorothy Neer Pini
DOROTHY NEER PINI
PLUMAS COUNTY RECORDER

NOTES:
THE BASIS OF BEARINGS IS THE NORTHERLY BOUNDARY OF LAKE ALMANOR COUNTRY CLUB UNIT NO. 14 AS SHOWN ON THE MAP FILED IN BOOK 3 OF MAPS AT PAGE 81.

SUBDIVISION ACREAGE:
TOTAL - 88.66 ACRES
LOTS - 77.22 ACRES
ROADS - 11.44 ACRES



VICINITY MAP
SCALE: 1 INCH EQUALS 2 MILES

LAKE ALMANOR COUNTRY CLUB UNIT NO. 18

IN A PORTION OF SECTION 25, T28N, R7E, MDB & M

PLUMAS COUNTY, CALIFORNIA

SCALE: 1"=100'

OWNER & SUBDIVIDER: EDWARD A. CLIFFORD

SIMPSON & ASSOCIATES, ENGINEERS & SURVEYORS
SUSANVILLE, CALIFORNIA

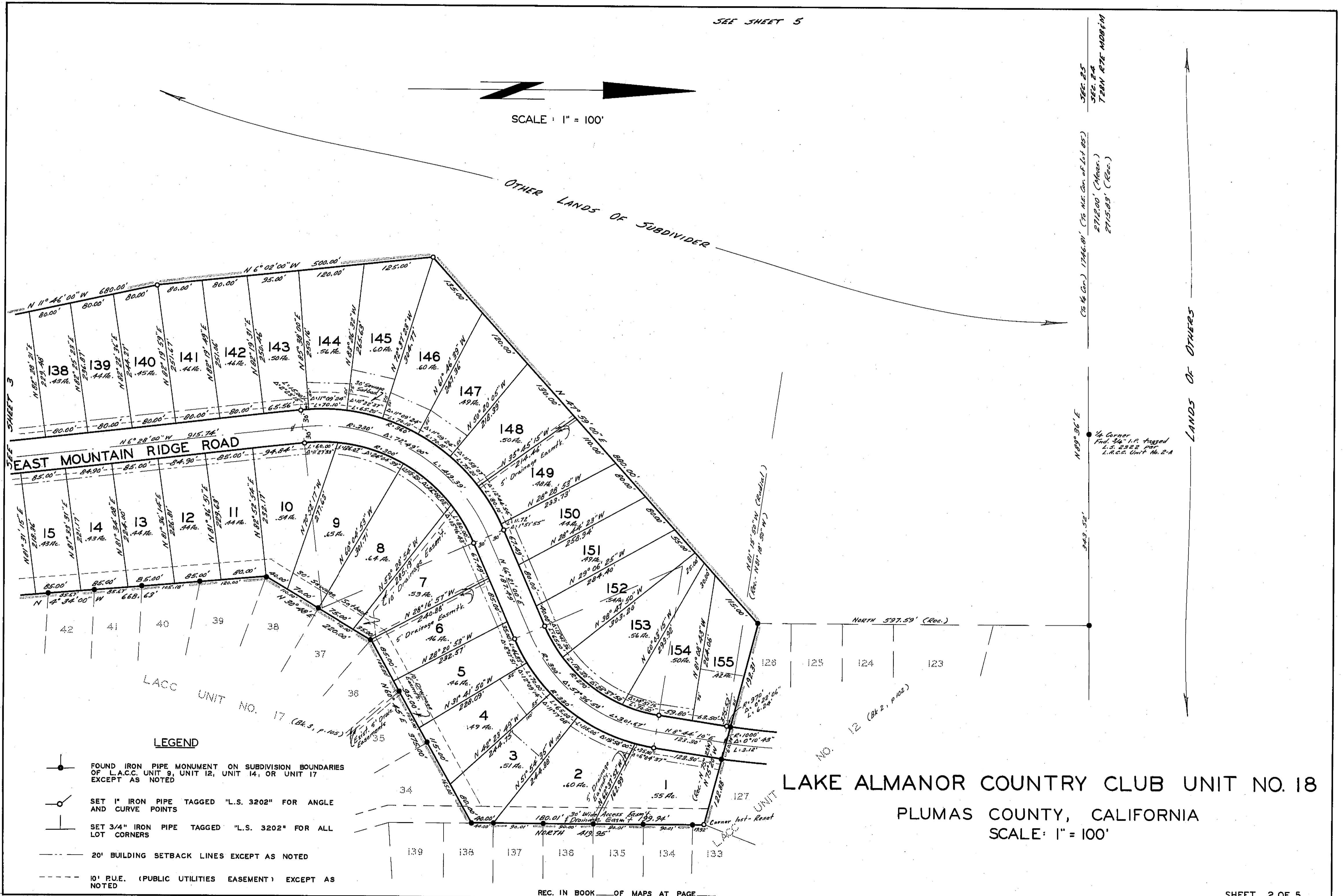
SHEET 1 OF 5

SEE SHEET 5

SCALE: 1" = 100'

OTHER LANDS OF SUBDIVIDER

LANDS OF OTHERS



LEGEND

- FOUND IRON PIPE MONUMENT ON SUBDIVISION BOUNDARIES OF L.A.C.C. UNIT 9, UNIT 12, UNIT 14, OR UNIT 17 EXCEPT AS NOTED
- SET 1" IRON PIPE TAGGED "L.S. 3202" FOR ANGLE AND CURVE POINTS
- SET 3/4" IRON PIPE TAGGED "L.S. 3202" FOR ALL LOT CORNERS
- 20' BUILDING SETBACK LINES EXCEPT AS NOTED
- - - 10' P.U.E. (PUBLIC UTILITIES EASEMENT) EXCEPT AS NOTED

LAKE ALMANOR COUNTRY CLUB UNIT NO. 18
 PLUMAS COUNTY, CALIFORNIA
 SCALE: 1" = 100'

REC. IN BOOK OF MAPS AT PAGE

SHEET 2 OF 5

70-44

3M115

SEE 25
 SEE 24
 TERN RTE MODRM

(To N.E. Cor. of Lot 85)
 2712.00' (Meas.)
 2715.83' (Rec.)

1/4 Corner
 Fnd. 34" I.P. tagged
 L.S. 2522 for
 L.A.C.C. Unit No. 2-A

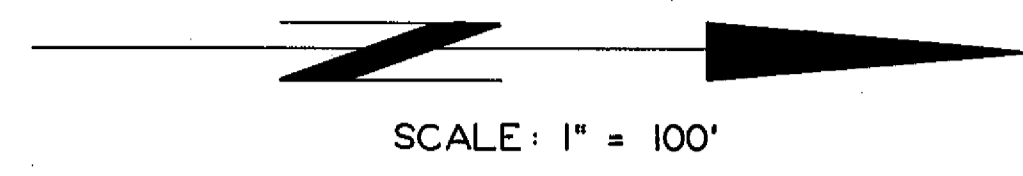
N 89° 36' E
 342.52'

N 27° 59' E (Rec.)

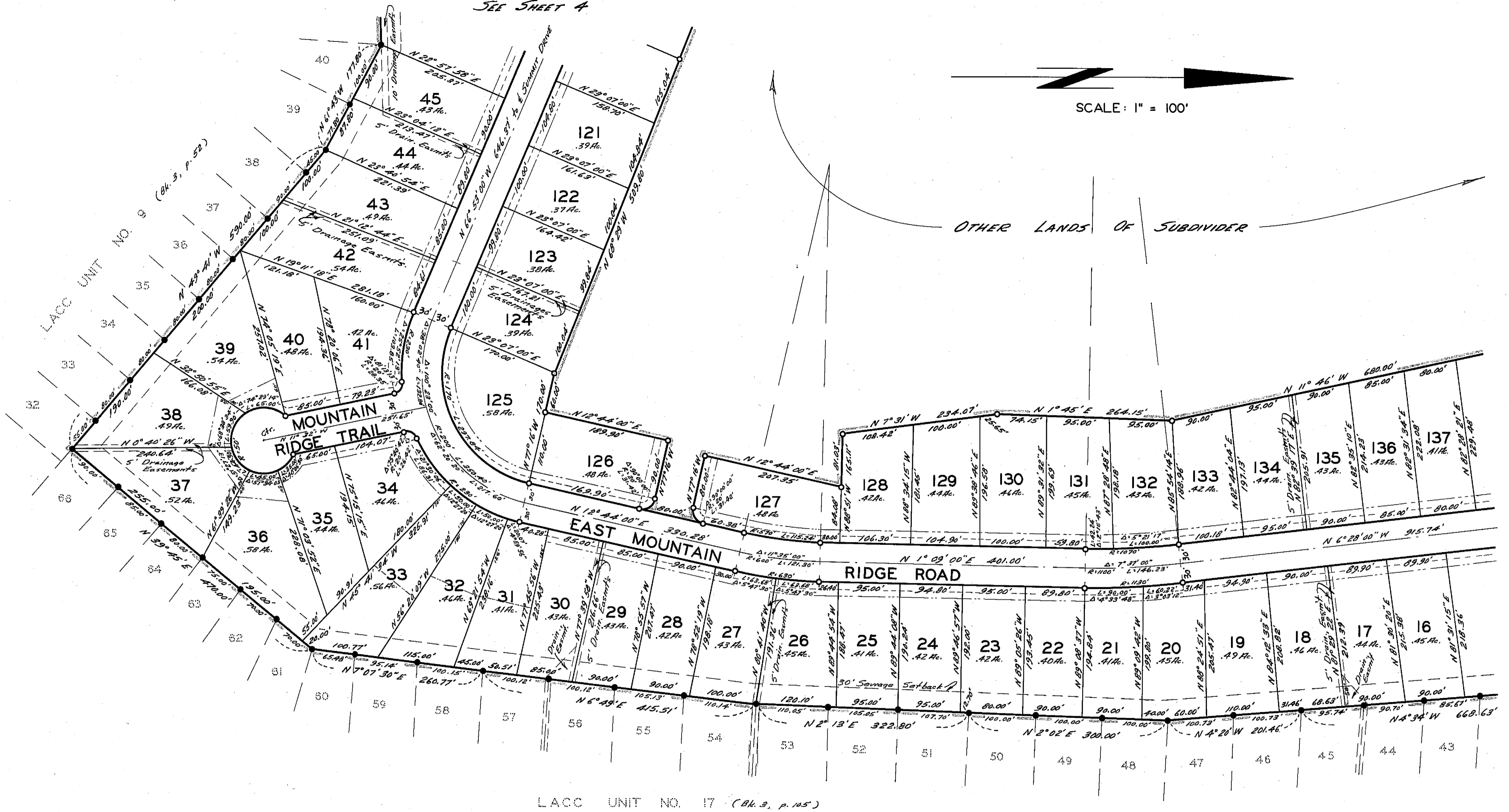
N 101° 18' 30" W (Revised)

(Rec. - N 101° 18' 30" W)

SEE SHEET 4



OTHER LANDS OF SUBDIVIDER



LACC UNIT NO. 17 (Blk. 3, p. 105)

LEGEND


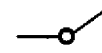
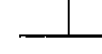
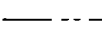

- FOUND IRON PIPE MONUMENT ON SUBDIVISION BOUNDARIES OF L.A.C.C. UNIT 9, UNIT 12, UNIT 14, OR UNIT 17 EXCEPT AS NOTED
- SET 1" IRON PIPE TAGGED "L.S. 3202" FOR ANGLE AND CURVE POINTS
- SET 3/4" IRON PIPE TAGGED "L.S. 3202" FOR ALL LOT CORNERS
- 20' BUILDING SETBACK LINES EXCEPT AS NOTED
- 10' P.U.E. (PUBLIC UTILITIES EASEMENT) EXCEPT AS NOTED

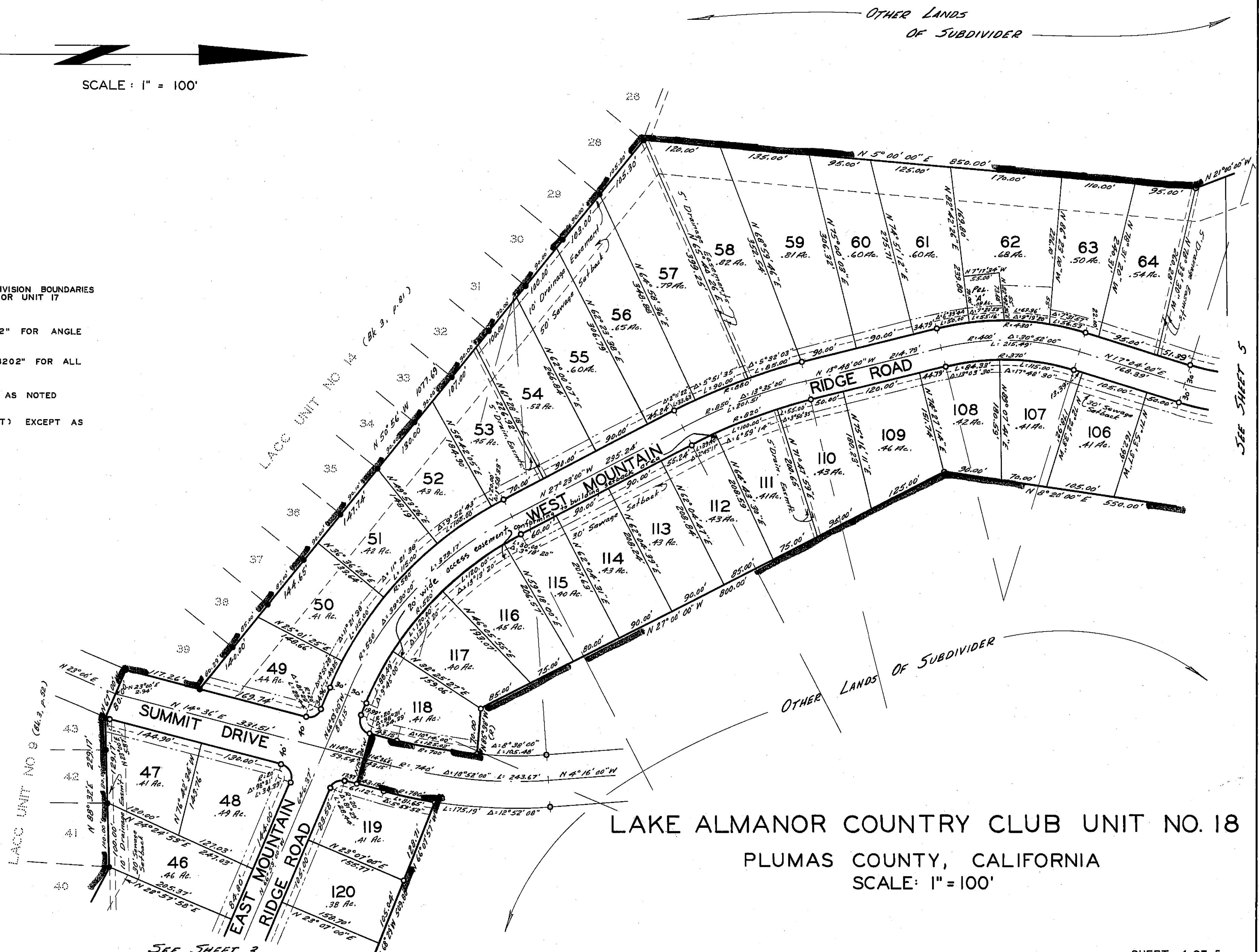
LAKE ALMANOR COUNTRY CLUB UNIT NO. 18
 PLUMAS COUNTY, CALIFORNIA
 SCALE: 1" = 100'

SEE SHEET 2

SCALE: 1" = 100'

LEGEND

-  FOUND IRON PIPE MONUMENT ON SUBDIVISION BOUNDARIES OF L.A.C.C. UNIT 9, UNIT 12, UNIT 14, OR UNIT 17 EXCEPT AS NOTED
-  SET 1" IRON PIPE TAGGED "L.S. 3202" FOR ANGLE AND CURVE POINTS
-  SET 3/4" IRON PIPE TAGGED "L.S. 3202" FOR ALL LOT CORNERS
-  20' BUILDING SETBACK LINES EXCEPT AS NOTED
-  10' P.U.E. (PUBLIC UTILITIES EASEMENT) EXCEPT AS NOTED



LAKE ALMANOR COUNTRY CLUB UNIT NO. 18
 PLUMAS COUNTY, CALIFORNIA
 SCALE: 1" = 100'

SEE SHEET 3

SEE SHEET 5

REC. IN BOOK OF MAPS AT PAGE

SHEET 4 OF 5

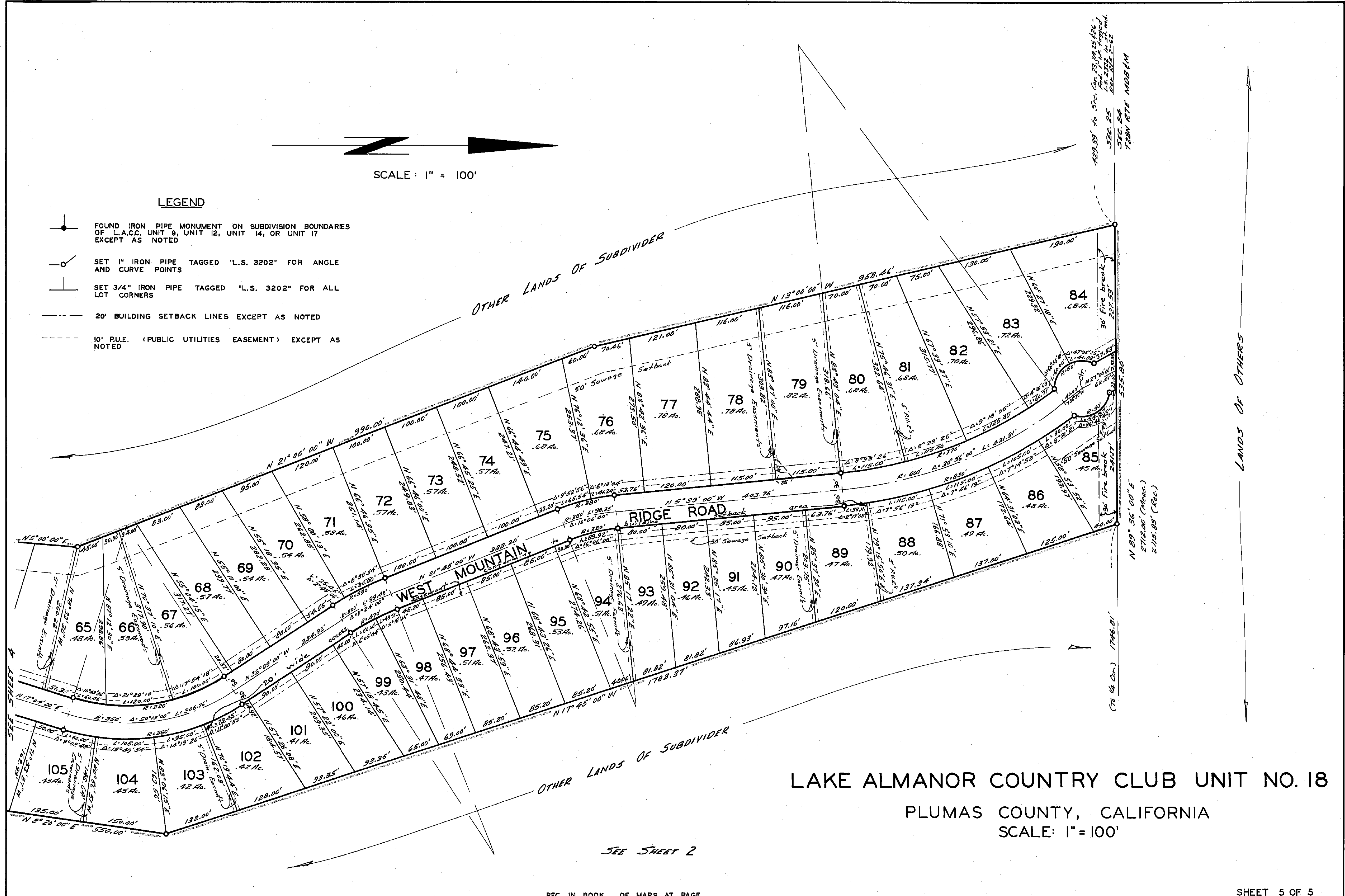
70-44

3M117

SCALE: 1" = 100'

LEGEND

- FOUND IRON PIPE MONUMENT ON SUBDIVISION BOUNDARIES OF L.A.C.C. UNIT 9, UNIT 12, UNIT 14, OR UNIT 17 EXCEPT AS NOTED
- SET 1" IRON PIPE TAGGED "L.S. 3202" FOR ANGLE AND CURVE POINTS
- SET 3/4" IRON PIPE TAGGED "L.S. 3202" FOR ALL LOT CORNERS
- 20' BUILDING SETBACK LINES EXCEPT AS NOTED
- 10' P.U.E. (PUBLIC UTILITIES EASEMENT) EXCEPT AS NOTED



LAKE ALMANOR COUNTRY CLUB UNIT NO. 18
 PLUMAS COUNTY, CALIFORNIA
 SCALE: 1" = 100'

SEE SHEET 2