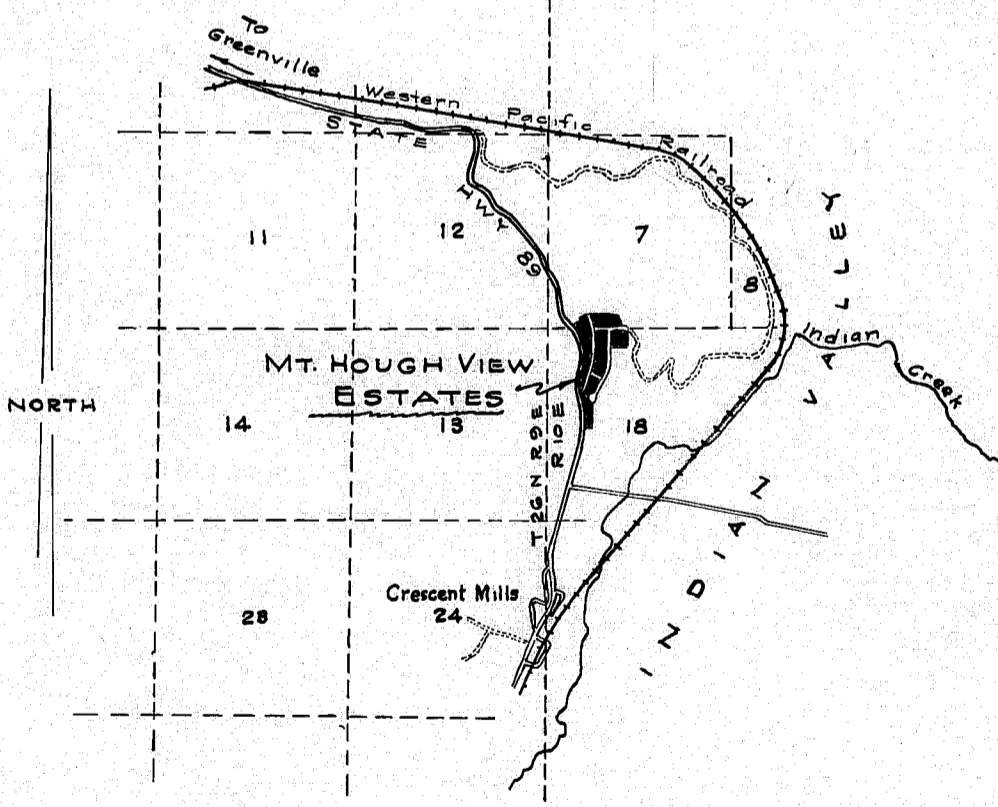


CURVE DATA									
CURVE No.	RADIUS	CENTRAL ANGLE	LENGTH	TANGENT	CURVE No.	RADIUS	CENTRAL ANGLE	LENGTH	TANGENT
1	2050.00	76° 50' 00"	602.28	303.33'	16	20.00	90° 00' 00"	31.42	20.00'
2	1550.00	7° 21' 56"	199.26	99.77'	17	20.00	92° 28' 22"	32.28	20.88'
3	1550.00	17° 00' 00"	459.89	231.65'	18	676.27	13° 00' 55"	153.62	77.14'
4	440.80	32° 00' 00"	246.19	126.40'	19	676.27	10° 38' 19"	125.57	62.97'
5	500.80	13° 49' 27"	120.83	60.71'	20	676.27	12° 52' 52"	152.04	76.34'
6	500.80	9° 21' 47"	81.83	41.01'	21	676.27	10° 46' 32"	127.19	63.78'
7	20.00	86° 08' 39"	30.07	18.70'	22	831.27	9° 50' 13"	142.72	71.54'
8	20.00	85° 02' 35"	29.69	18.34'	23	831.27	9° 23' 36"	136.28	68.29'
9	196.85	20° 00' 00"	68.71	34.71'	24	831.27	21° 42' 10"	337.60	170.85'
10	735.18	7° 28' 38"	95.94	48.04'	25	20.00	44° 24' 55"	15.50	8.16'
11	725.18	7° 28' 38"	103.77	51.96'	26	50.00	109° 52' 03"	95.88	71.23'
12	961.67	1° 21' 29"	22.79	11.40'	27	50.00	63° 28' 50"	55.40	30.93'
13	961.67	1° 21' 29"	21.37	10.69'	28	50.00	95° 28' 57"	83.32	55.03'
14	961.67	4° 47' 09"	80.33	40.18'					
15	961.67	4° 47' 09"	75.32	37.68'					

- LEGEND**
- ⊙ = Set 6" Concrete monument tagged R.C.E. 11128
 - = Set 1" Iron pipe tagged R.C.E. 11128
 - = Found Calif. State Hwy. R.O.W. monument
 - ⊞ = 5'x20' Anchor easement
 - ⊞ = 10' Underground Television Transmission Cable easement

NOTE:
 Basis of BEARING: California State Highway II PLU 89 B Sign Route 89. A check survey of monuments of Sign Route 89 was run. 6" square concrete monuments found 50' left of Sta. 452+26, 50' left of Sta. 456+62.18, 100' left of Sta. 461+86.91, and 100' left of Sta. 499+38.29 were found compatible with one another and the record and were used as a basis of bearing.



LOCATION MAP

UNIT NO. 1 MT. HOUGH VIEW ESTATES

A SUBDIVISION OF PORTIONS OF THE NW 1/4 SECTION 18 AND SW 1/4 OF SECTION 7, T26N R10E M.D.B.&M. PLUMAS COUNTY, CALIF.

OWNERS & SUBDIVIDERS
 MT. HOUGH VIEW ESTATES, INC.
 SCALE 1"=100' OCTOBER, 1962
 RINGEL & ASSOCIATES, INC.
 CIVIL ENGINEERS SURVEYORS
 CHICO ORLAND