

Bearings Shown are from Unit 2
Bearings from Solar Observations
are 0° 25' Left of Bearings Shown

Scale 1 inch = 100 feet

S.W. 1/4 S.E. 1/4
SEC. 36 T.28 N. R.7 E.

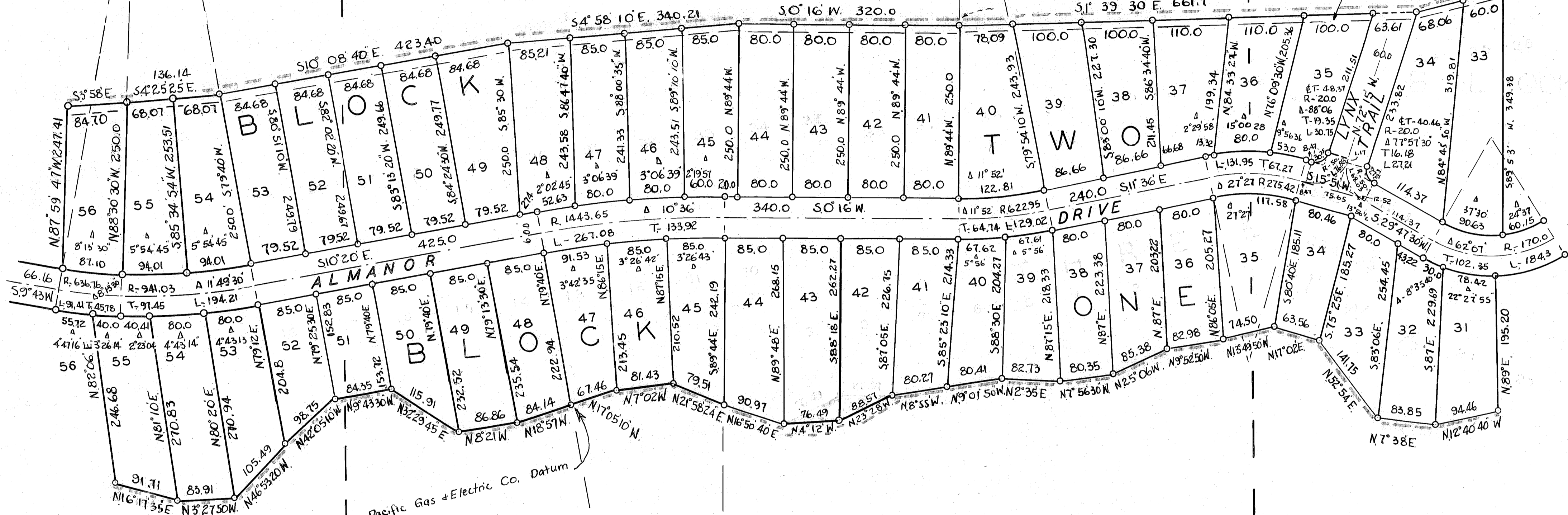
N.W. 1/4 S.E. 1/4 SEC. 36

S.W. 1/4 N.E. 1/4

SEC. 36 T.28 N. R.7 E.

10 FOOT PUBLIC UTILITY EASEMENT

Total
248.06



Lots Extend to 4500 Contour
Bench Mark is on Spillway at Dam.

Pacific Gas + Electric Co. Datum

Note - The STREETS ARE NOT OFFERED FOR DEDICATION

THE LOTS ADJACENT TO THE 4500' CONTOUR ARE
SUBJECT TO THE AGREEMENT RECORDED IN VOL. 108
PAGE 335 O.R. PLUMAS COUNTY, CALIF.

LAKE ALMANOR COUNTRY CLUB UNIT NO. 4

EDWARD A. CLIFFORD OWNER & SUBDIVIDER
O. R. SMITH ENGINEER
LOREN J. SARGENT SURVEYOR