

# LAKE ALMANOR COUNTRY CLUB UNIT NO. 12

LOCATED IN SECTION 25 T.28N. R.7E. M.D.B.&M.  
PLUMAS COUNTY, CALIFORNIA  
OWNER & SUBDIVIDER  
EDWARD A. CLIFFORD

MAY 1965

SCALE 1"=100'

ENGINEER  
C.H. BROGUNIER R.E. 8138  
CHICO, CALIFORNIA

SURVEYORS  
L.J. SARGENT L.S. 2322  
REDDING, CALIFORNIA  
WALTER B. GRIMES C. 7294  
CHICO, CALIFORNIA



### LEGEND

- 3/4" IRON PIPE SET AND TAGGED C. 7294
- PUBLIC UTILITY EASEMENT LINE
- - - SETBACK LINE - \*SEE NOTE
- ▲ 5' x 20' ANCHOR EASEMENT CENTERED ON PROPERTY LINE
- ▨ PUBLIC UTILITY OVERHANG EASEMENT
- DRAINAGE EASEMENT
- FRONTAGE ROAD EASEMENT
- POINT ON ROAD CENTERLINE

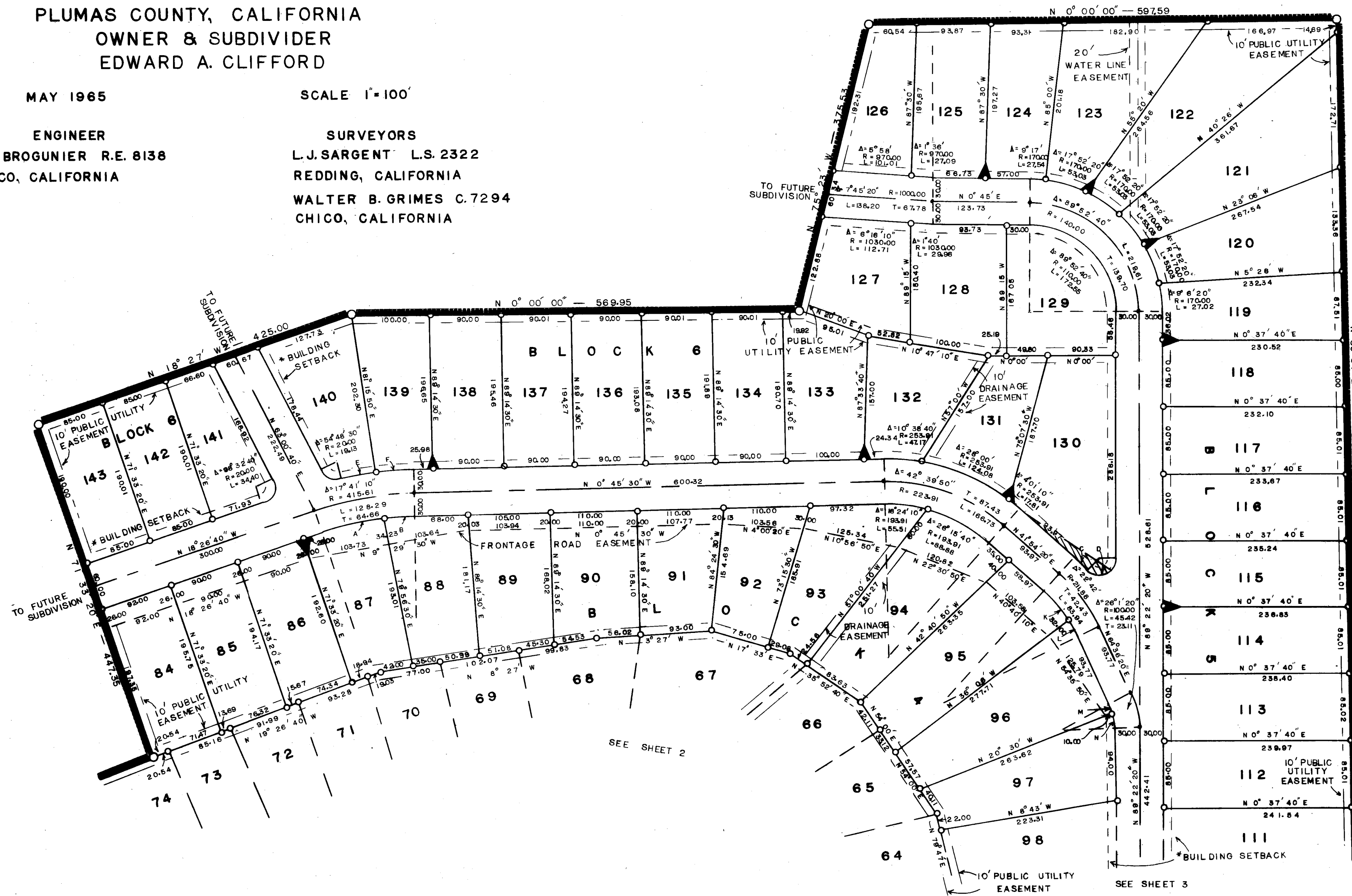
### NOTES

THE BASIS OF BEARING IS THE WESTERLY BOUNDARY OF BLOCK 6 AS SHOWN ON THE FILED MAP OF LAKE ALMANOR COUNTRY CLUB UNIT NO. 2

\* BUILDING SETBACK IS 20' EXCEPT AT AUTOMOTIVE GARAGES WHERE IT IS 10'

### CURVE DATA

A	B	C	D	E	F	G	H	I	J	K	L	M	N
11° 53' 30"	5° 47' 40"	5° 40' 10"	136° 56' 50"	7° 19' 00"	5° 55' 00"	15° 7' 40"	7° 34' 20"	10° 38' 40"	18° 22' 20"	10° 37' 40"	10° 37' 40"	10° 37' 40"	10° 37' 40"
385.81	385.81	241.88	2000	445.81	445.81	181.88	181.88	70.00	70.00	236.85	236.40	236.97	241.84
80.03	59.00	23.93	47.80	56.90	46.02	46.02	24.04	15.00	18.78				



2M104