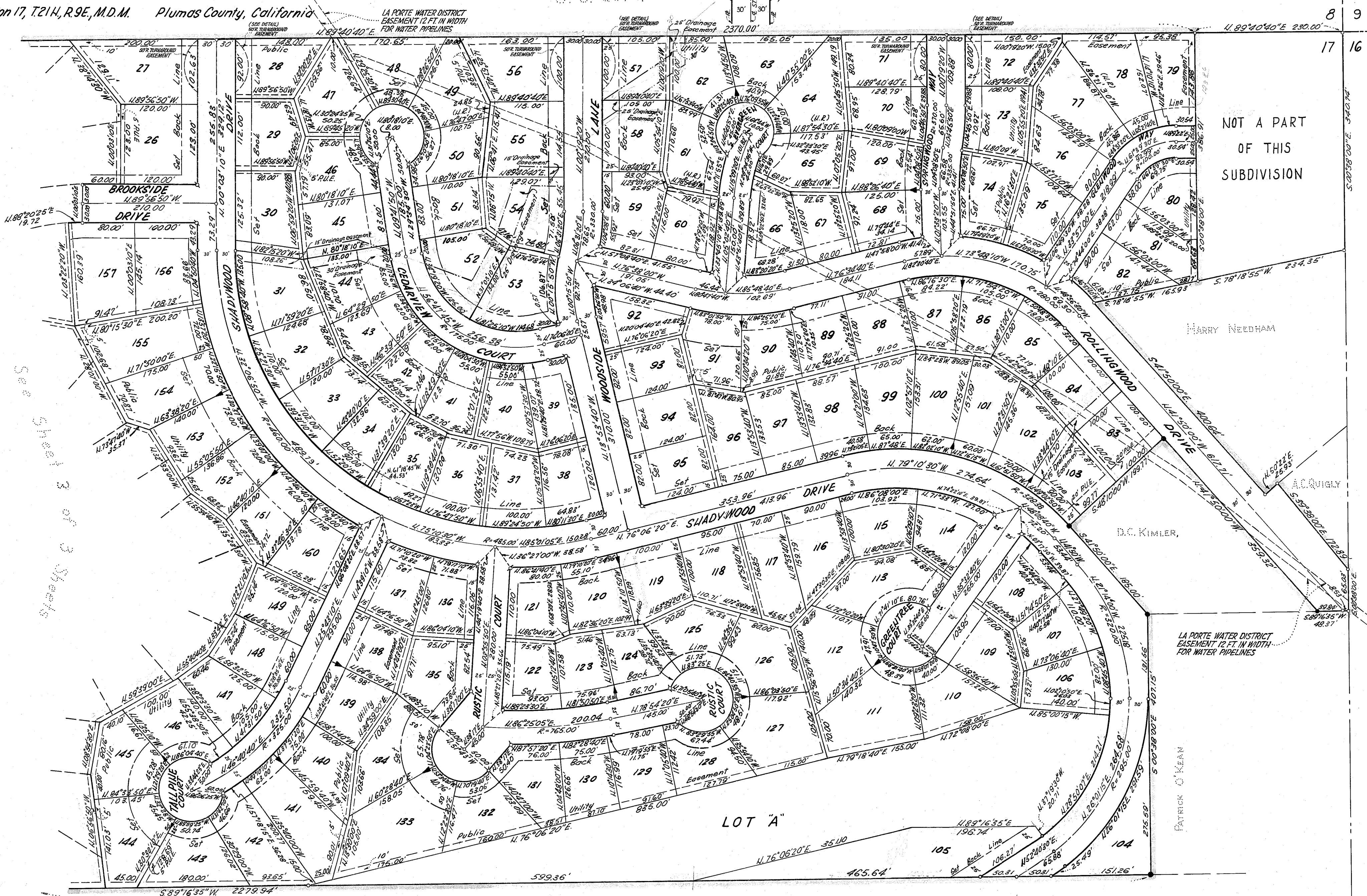
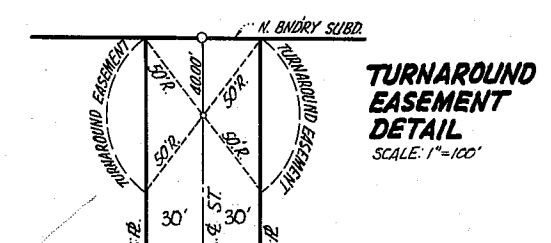


# Plat Of LA PORTE PILES COUNTRY CLUB

A Portion Of Section 17, T.21N., R.9E., M.D.M. Plumas County, California

U. S. Gov't.

Raymond Vail, Civil Engineer  
Scale: 1" = 100'  
Sheet 2 of 3 Sheets



NOT A PART  
OF THIS  
SUBDIVISION

Scale: 1" = 100'

Sheet 2 of 3 Sheets

U. S. Gov't.