

SUPPLEMENTAL PLAT OF CRESCENT MILLS TOWN SITE

COMPRISING
THE N¹/₂ OF THE S.E.¹/₄ & THE S.E.¹/₄ OF THE N.E.¹/₄ OF
SEC. 24 T.26 N. R. 9 E. M. D. M.

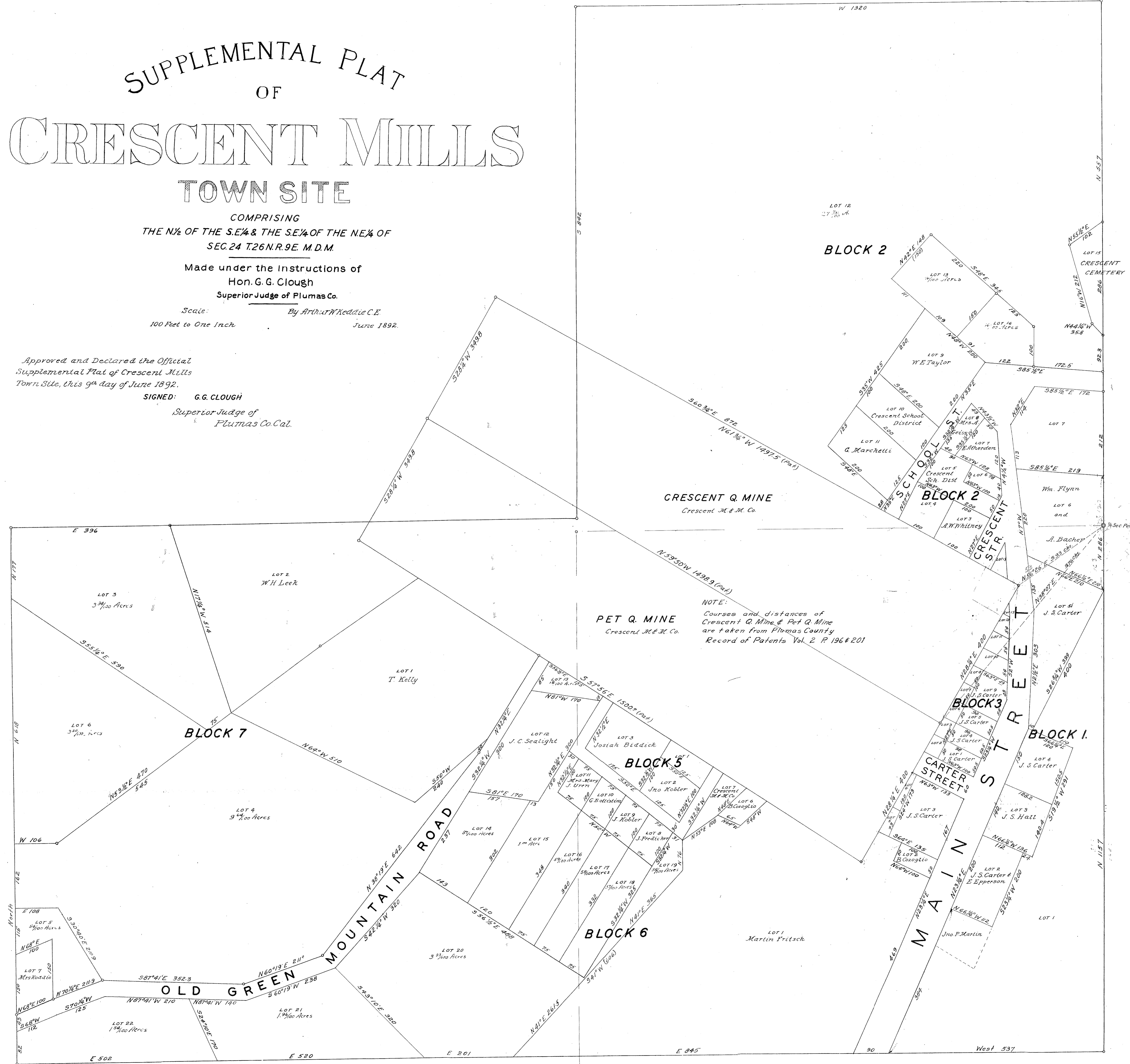
Made under the Instructions of
Hon. G. G. Clough
Superior Judge of Plumas Co.

Scale: By Arthur W. Heddie C.E.
100 Feet to One Inch. June 1892.

Approved and Declared the Official
Supplemental Plat of Crescent Mills
Town Site, this 9th day of June 1892.

SIGNED: G. G. CLOUGH
Superior Judge of
Plumas Co. Cal.

FILED AT THE REQUEST OF G.G. CLOUGH
JAN. 12, 1893 AT 30 MIN PAST 10 O'CLOCK P.M.
SIGNED: JNO. M. MYERS
I, A. WATSON, County Surveyor of the County of
Plumas, State of California, hereby certify
that this is a true copy of all the Blocks & Lots
as shown on the original map filed for record and
the courses and distances are as set forth in the
original Field Notes for the TOWN OF CRESCENT MILLS
on file in the Plumas County Records Office.
Dated this 20th day of Dec. 1950



NOTE:
Courses and distances of
Crescent Q. Mine & Pet Q. Mine
are taken from Plumas County
Record of Patents Vol. 2 P 196 & 201