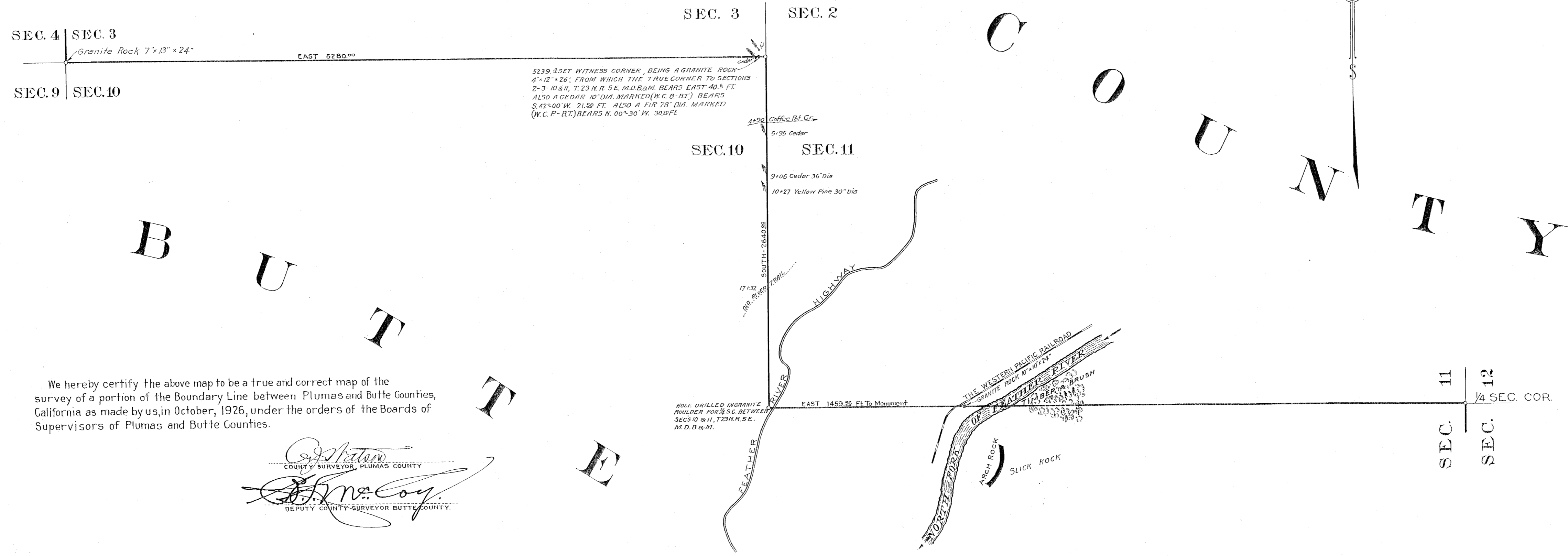


P L U M A S

C O U N T Y



SEC. 4 | SEC. 3
 Granite Rock 7" x 8" x 24"
 EAST 5280.00"
 SEC. 9 | SEC. 10

5239.4 SET WITNESS CORNER, BEING A GRANITE ROCK
 4" x 2" x 36" FROM WHICH THE TRUE CORNER TO SECTIONS
 2-3-10&11, T. 23 N. R. 5 E. M. D. B. & M. BEARS EAST 40.5 FT
 ALSO A CEDAR 10" DIA MARKED (N.C.B-BT) BEARS
 S 42° 00' W. 21.50 FT. ALSO A 10" x 28" DIA. MARKED
 (W.C.F.-BT) BEARS N 60° 30' W. 30.0 FT.

SEC. 10 | SEC. 11
 9'06 Cedar 36" Dia
 10'27 Yellow Pine 30" Dia
 17'32
 800 PLYMOUTH
 1000
 1459.95 FT To Monument
 EAST 1459.95 FT To Monument

SEC. 11 | SEC. 12
 1/2 SEC. COR.

We hereby certify the above map to be a true and correct map of the survey of a portion of the Boundary Line between Plumas and Butte Counties, California as made by us in October, 1926, under the orders of the Boards of Supervisors of Plumas and Butte Counties.

A. J. Watson
 COUNTY SURVEYOR, PLUMAS COUNTY
B. L. McCoy
 DEPUTY COUNTY SURVEYOR BUTTE COUNTY.

We the undersigned, constituting the Board of Supervisors of Plumas County, California do hereby approve, ratify and confirm the official survey hereon delineated, as made by A. J. Watson and B. L. McCoy, Special Commissioners on behalf of Plumas and Butte Counties and do hereby declare the same to be the true and correct boundary line between the Counties of Plumas and Butte, State of California. Dated November 12th 1926.

ATTEST: *J. P. ...*
 COUNTY CLERK

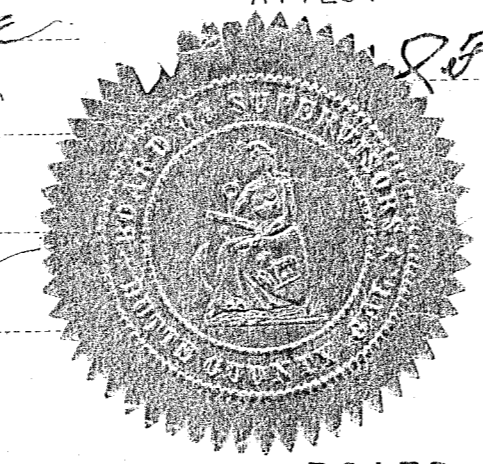


BOARD OF SUPERVISORS, PLUMAS COUNTY, CALIFORNIA

T. 23 N. R. 5 E. M. D. B. & M.

We the undersigned, constituting the Board of Supervisors of Butte County, California, do hereby approve, ratify and confirm the official survey hereon delineated as made by B. L. McCoy and A. J. Watson, Special Commissioners on behalf of Butte and Plumas Counties, and do hereby declare the same to be the true and correct boundary line between the Counties of Butte and Plumas, State of California Dated November 12th, 1926.

ATTEST: *S. F. ...*
 COUNTY CLERK



BOARD OF SUPERVISORS, BUTTE COUNTY, CALIFORNIA

John ...
 CHAIRMAN
B. J. Mahon
G. A. Porter
James Craig
H. H. ...

Filed as of record at
12 minutes past 12 o'clock A.M.
 1926
 at request of *...*

COUNTY RECORDER OF
 PLUMAS COUNTY, CALIFORNIA
...

OFFICIAL MAP
 OF PART OF
 BOUNDARY LINE
 BETWEEN
 BUTTE & PLUMAS COUNTIES
 AS SURVEYED BY B. L. MCCOY & A. J. WATSON
 OCTOBER 1926
 SCALE: 1 inch = 500 feet