

SURVEY FOR
T. S. WALKER ETAL.
 IN SECTION 6 & 7 T29N RBE.MDM.AND
 IN SECTION 1 & 12 T.29 N.R.7E.MDM.
 PLUMAS COUNTY, CALIFORNIA
 Scale - 1 inch = 800 feet
 ● Shows Corner Found
 ○ Shows Corner Set + Tagged L.S. 2322
 Solid Lines are Blazed
 Loren J. Sargent L.S. 2322

SHASTA FORESTS CO. REDDING.

Feb, 1957

CERTIFICATE OF COUNTY SURVEYOR

I hereby Certify the Mathematics and Procedure shown on this Map are Correct

L. Sargent 4/11/57
 County Surveyor County of Plumas State of Calif.

CERTIFICATE OF COUNTY RECORDER

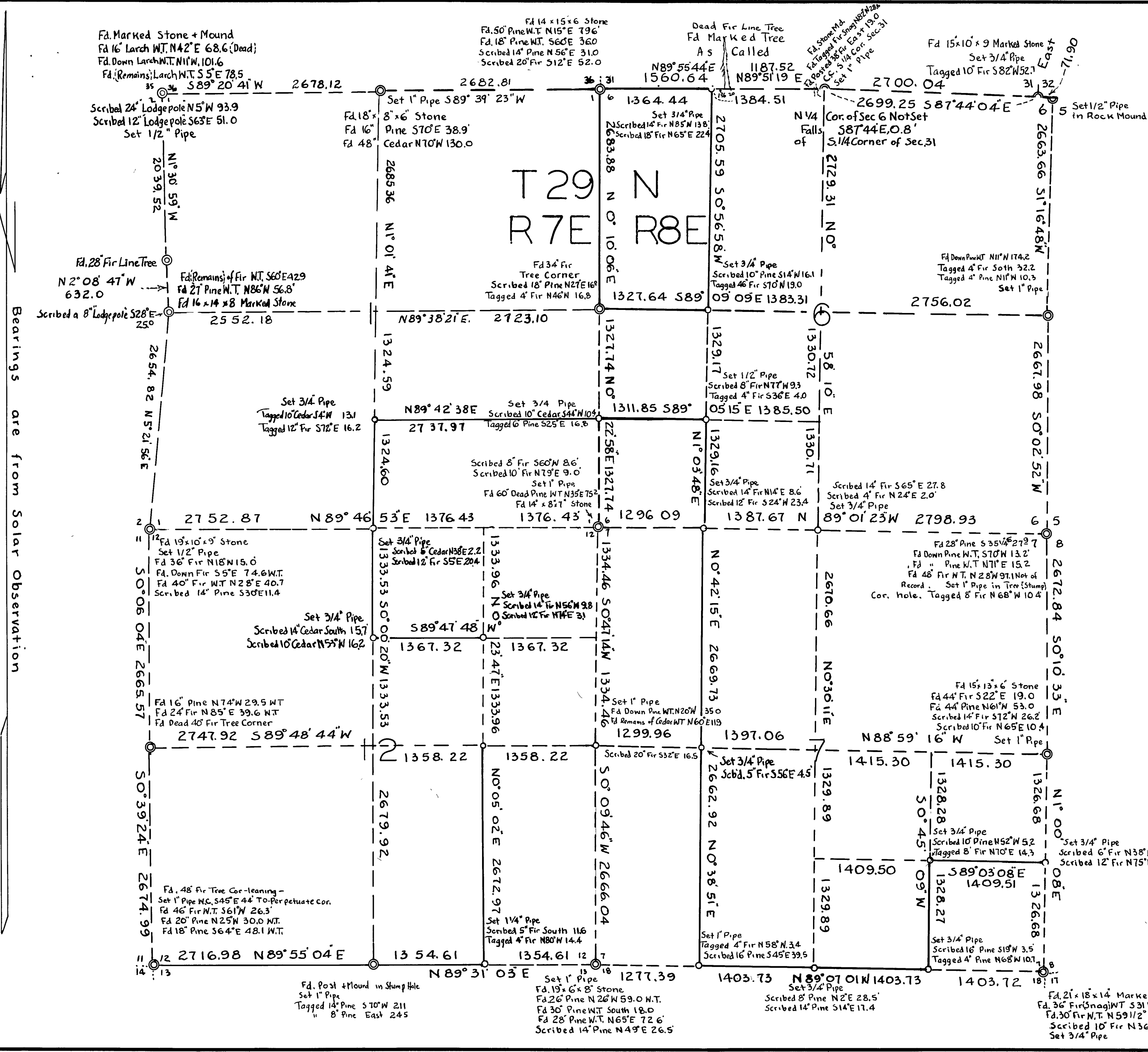
Accepted for Record and Recorded on Page 137

Book L. RECORD OF SURVEYS in the Office of the County Recorder

this 1st Day of April 1957

Loren J. Sargent
 County Recorder, County of Plumas, State of Calif.

2271



Bearings are from Solar Observation