

NOTE: THE PORTION OF HIGH STREET WITHIN THE HEAVY LINES, PLUS PARCELS N° 1 & N° 2, IS PROPOSED AS A PUBLIC STREET.

RECORD OF SURVEY

OF A PORTION OF HIGH STREET

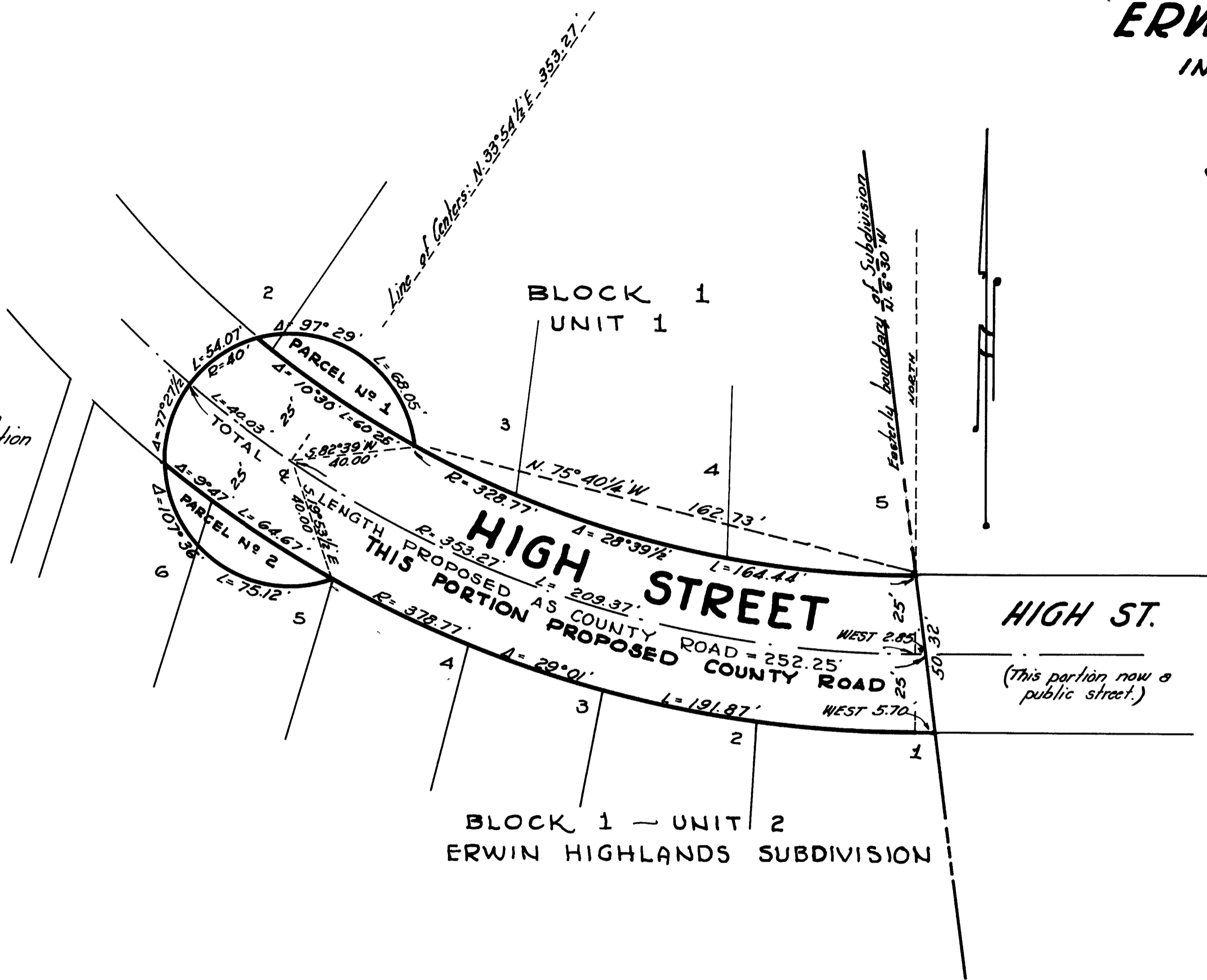
ERWIN HIGHLANDS SUBDIVISION

IN THE TOWN OF QUINCY, CALIFORNIA.

PREPARED AT THE REQUEST OF
JOHN M. MUELRATH
by
W. Robert Jennings, R.C.E. 6185
Susanville, Calif.

Scale: 1"=30'

Note: High St. is dedicated to the public use by recordation of the subdivision maps of Erwin Highlands. Parcels N° 1 & N° 2 to be deeded to the County of Plumas.



I, W. ROBERT JENNINGS, hereby certify that I am a Registered Civil Engineer of the State of California; that this map is compiled from surveys and calculations made by me at various times; and that sufficient subdivision monuments exist to enable this street to be laid out on the ground.

W. Robert Jennings
W. Robert Jennings, R.C.E. 6185

I, A. J. WATSON, County Surveyor of Plumas County, hereby certify that I have examined this map in accordance with the provisions of law.

A. J. Watson 7/18/55
A. J. Watson, R.C.E. 2554

395
FILED FOR RECORD THIS 18TH DAY OF
JULY, 1955, AT 35 MINUTES PAST 2
P.M.

Ida E. Hogan
IDA E. HOGAN
COUNTY RECORDER OF PLUMAS COUNTY

The basis of bearings of this map is the record bearings of Erwin Highlands Subdivision.

Fee: \$1.00

FILE N°