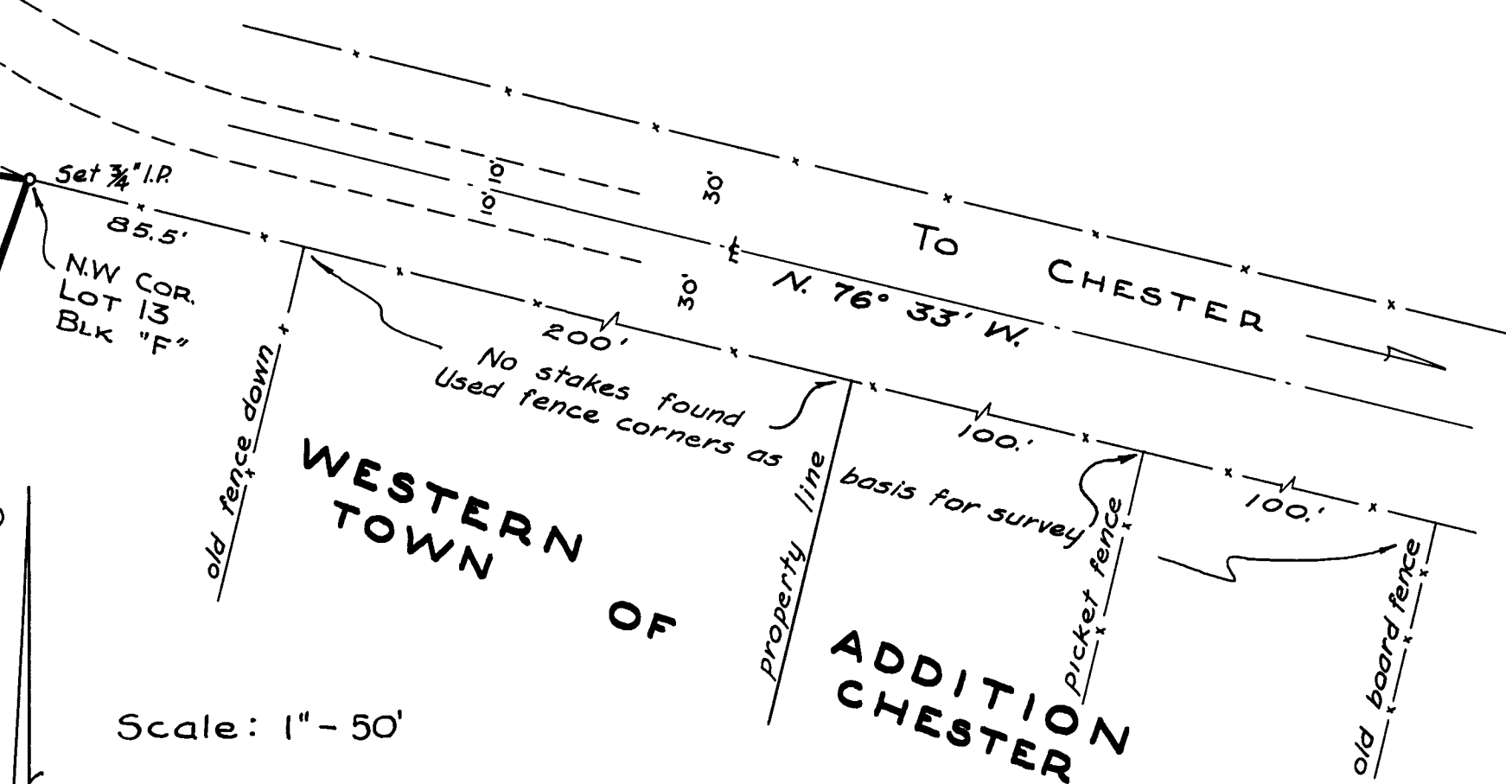
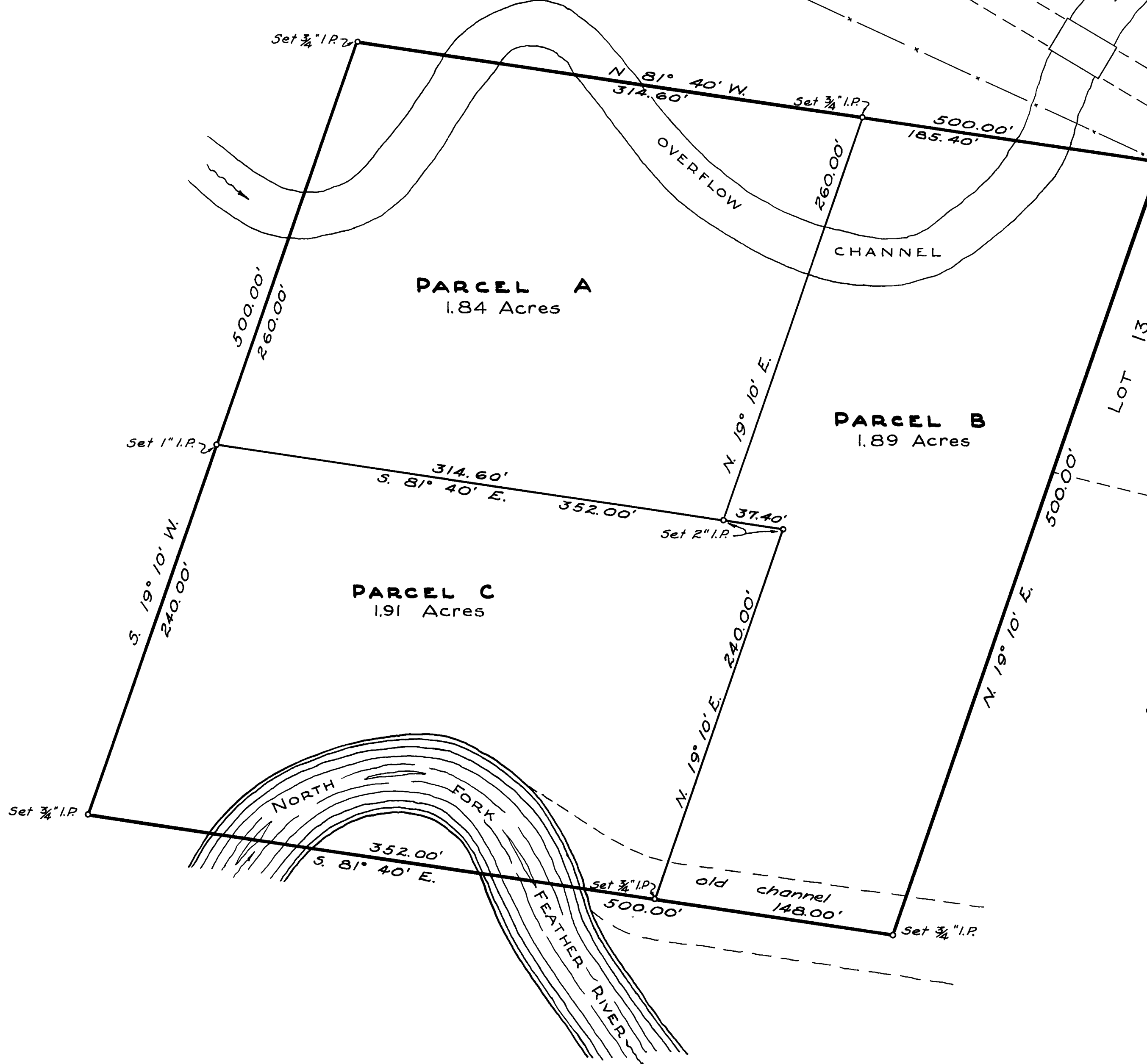


RECORD OF SURVEY OF LANDS OF PIEPENBURG, GETZ & REYNOLDS

IN THE S.E. 1/4 SEC. 6, T. 28N., R. 7E., M.D.M.

Surveyed at the request of
ALVIN H. GETZ

by
W. ROBERT JENNINGS R.E. 6185



Scale: 1" = 50'

I, W. ROBERT JENNINGS, hereby certify that I am a Registered Engineer of the State of California; that this map correctly represents a survey made under my supervision in October 1954; and that all the monuments shown hereon actually exist and occupy the positions indicated.

W. Robert Jennings
Reg. Civil Eng. # 6185

I, A. J. Watson, County Surveyor of Plumas County, Calif., hereby certify that I have examined this map in accordance with the provisions of law.

A. J. Watson 2/25/55
R. C. E. # 2554

2290
FILED FOR RECORD THIS 25th DAY OF
DEC., 1954, AT 10 MINUTES PAST
February 19, 1955, P.M.

Ida E. Hoggan by *E. P. Brown* Deputy
COUNTY RECORDER OF PLUMAS CO.

FEE: \$1.00

FILE NO 2290

The basis of bearings of this map is the Subdivision Map of Western Addition, Town of Chester.