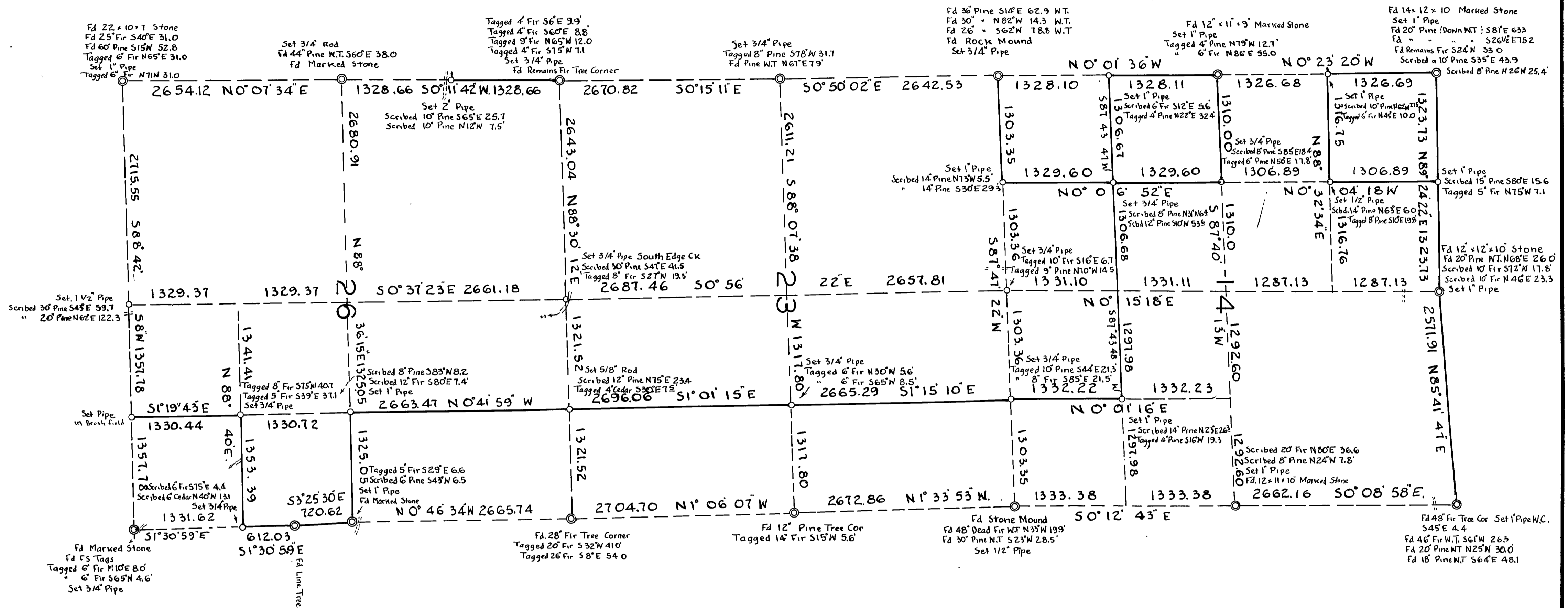


T29 N R7 E MDB&M

Bearings are from Solar Observation



SURVEY FOR FLETCHER L WALKER ETAL.

IN SECTION 14, 23, 26, T29 N R7 E MDB&M Plumas County, California.

© Shows Corners Found - 0 Shows Corners Set + Tagged L.S. 2322

Scale 1 inch = 800 feet Solid Lines are Blazed.

Feb. 1955 Loren J. Sargent L.S. 2322

SHASTA FORESTS CO.

Loren J. Sargent

2150

CERTIFICATE OF COUNTY RECORDER

Accepted for Record + Recorded in Book 1 Page 125
 In the Office of the County Recorder County of
 Plumas this 16 Day of February At 10 O'clock A.M. 1955
Ida E. Hogan County Recorder, County of Plumas, State of California

CERTIFICATE OF COUNTY SURVEYOR

I hereby Certify that this Map is
 Mathematically Correct.
W. J. Sargent 2/16/55
 County Surveyor, County of Plumas, State of
 California.