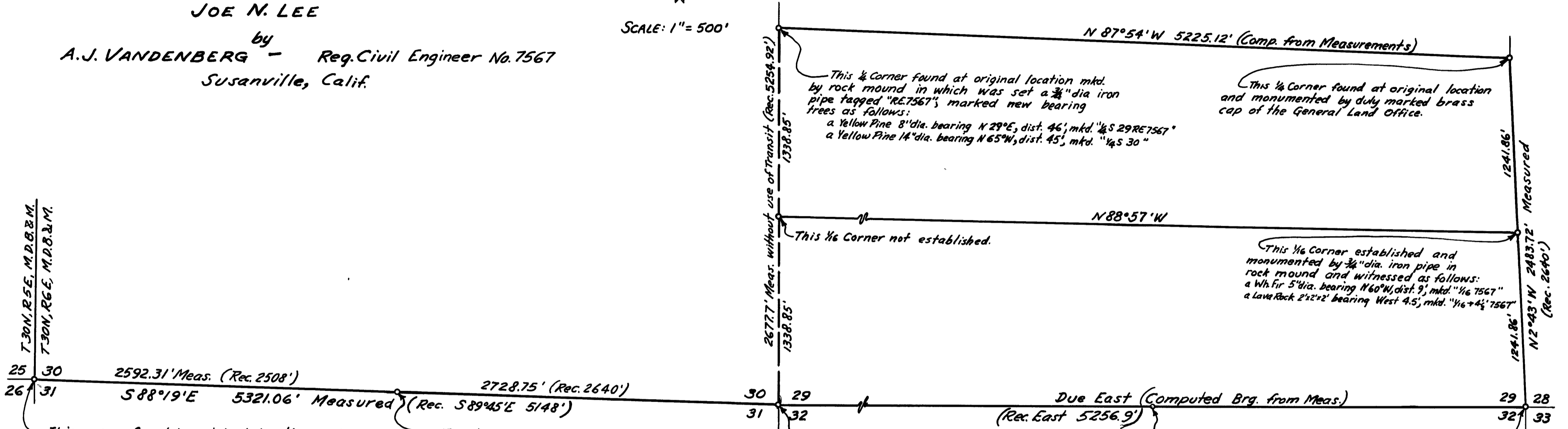
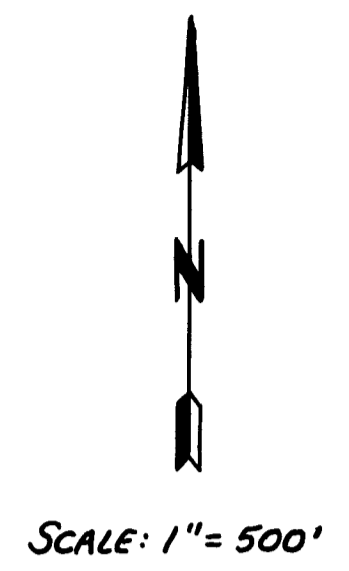


RECORD OF SURVEY

OF A PORTION OF THE BOUNDARIES OF THE
LANDS OF W.H. & JOE N. LEE
IN SECTIONS 29 & 30, T30N, R6E, M.D.B.&M.

Surveyed at the request of
JOE N. LEE

by
A.J. VANDENBERG - Reg. Civil Engineer No. 7567
Susanville, Calif.



This corner found in original location and monumented by duly marked brass cap of the General Land Office; Marked a new witness tree as follows: a 6" dia. Cedar bearing S 88° W, dist. 29', mkd. "T30N R5E 7567"

This 1/4 Corner not found after thorough search and therefore considered lost. Corner was reestablished and monumented by 3/4" diam. iron pipe tagged "RE.7567" in rock mound and witnessed as follows: a 6" dia. Wh. Fir bearing N 40° W, dist. 2.4', mkd. "1/4 SC 30 RE 7567" a 12" dia. S. Pine bearing S 25° E, dist. 2.8', mkd. "1/4 SC 31 RE 7567"

This corner found at original location mkd. by small rock mound in which was set a 3/4" dia. iron pipe tagged "RE.7567" and witnessed as follows: Original bearing tree - a 8" dia. Cottonwood bearing West dist 8' mkd. "31 SE 31" New bearing trees mkd. as follows: a Wh. Fir 12" dia. S 42° W dist. 40' mkd. "BT SC 31 RE 7567" a Cottonwood 28" dia. S 15° W dist. 56' mkd. "BT SC 31 RE 7567"

This 1/4 Corner not found. Original location of this corner found as monumented by rock mound in which was set a 3/4" dia. iron pipe tagged "RE.7567" and witnessed by original bearing trees as follows: a Yellow Pine 4" dia bearing S 2° E, dist. 28', mkd. but illegible; a Yellow Pine 4" dia. (fallen) brg N 6° W, dist 82', mkd. but illegible; No other trees near. This location was used for purposes of this survey. A duly marked lava stone and a duly marked 2" dia. iron pipe with brass cap of the General Land Office was found S 85° 04' W, dist. 5170' from the original location above described.

NOTES:
The bases of bearings of this map are direct solar observations taken at the southeast corner of Section 29 and at the southeast corner of Section 30.
The words "Record" and "Rec." refer to Government Land Office records of the original government surveys.

I, A.J. VANDENBERG, hereby certify that I am a Registered Civil Engineer of the State of California; that this map correctly represents a survey made by me in July, 1953; and that all monuments shown hereon actually exist and occupy the positions indicated.

June 2, 1954 Date
A.J. Vandenberg
A.J. VANDENBERG
Reg. Civ. Engr. 7567

I, A.J. Watson, County Surveyor of Plumas County, Calif, hereby certify that I have examined this map in accordance with the provisions of law.

June 7th, 1954 Date
A.J. Watson
A. J. WATSON, R.E. No. 2554
County Surveyor of Plumas County

2547
Filed for Record this 10 day of June, 1954, at 15 minutes past 10, A.M.
Deputy Recorder of Plumas County
by Deputy
Fee: \$1.00 Instrument: _____