

RECORD OF SURVEY

ADJACENT TO
TOWN OF GREENVILLE

COUNTY OF PLUMAS

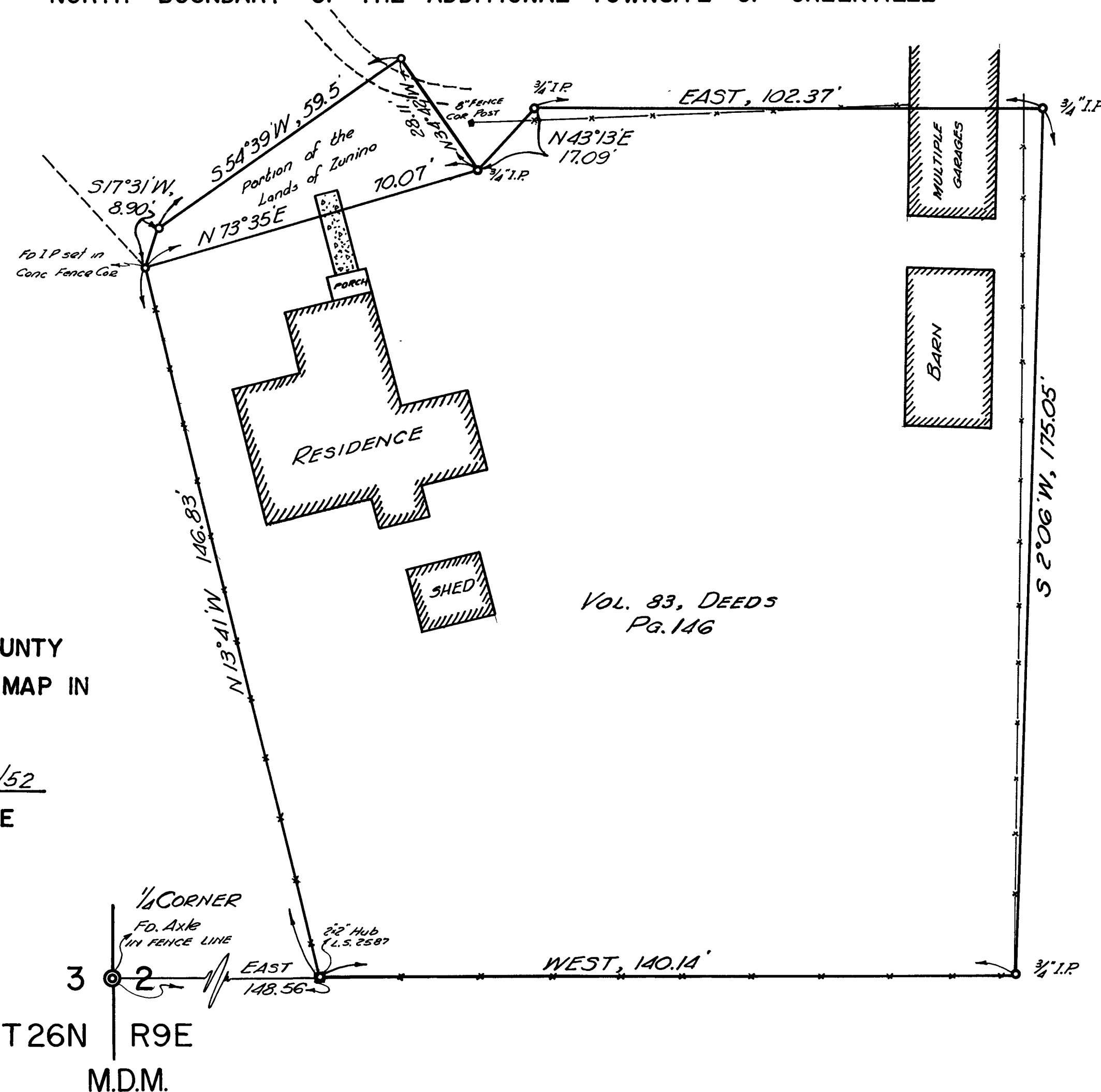
CALIFORNIA

SURVEYED AT THE REQUEST OF BOB GOTT

JULY, 1952

SURVEYED BY  RICHARD R. ECKER, L.S. 2587

**BASIS OF BEARINGS DERIVED FROM MONUMENTED
NORTH BOUNDARY OF THE ADDITIONAL TOWNSITE OF GREENVILLE**



I, A.J. WATSON, COUNTY SURVEYOR OF PLUMAS COUNTY
HEREBY CERTIFY THAT I HAVE EXAMINED THIS MAP IN
ACCORDANCE WITH THE PROVISIONS OF LAW.

E. Watson 8/5/52
COUNTY SURVEYOR DATE

FILE NO 380

FILED AT THE REQUEST OF RR.ECKER
THIS 6th DAY OF AUG, 1952 AT 15
MINUTES PAST 11 O'CLOCK A.M.

W. E. Hogan
COUNTY RECORDER