

RECORD OF SURVEY

A PORTION OF THE NORTHEAST QUARTER OF THE NORTHEAST QUARTER, SECTION 20, T 24 N, R 10 E, M.D.M.

COUNTY OF PLUMAS

CALIFORNIA

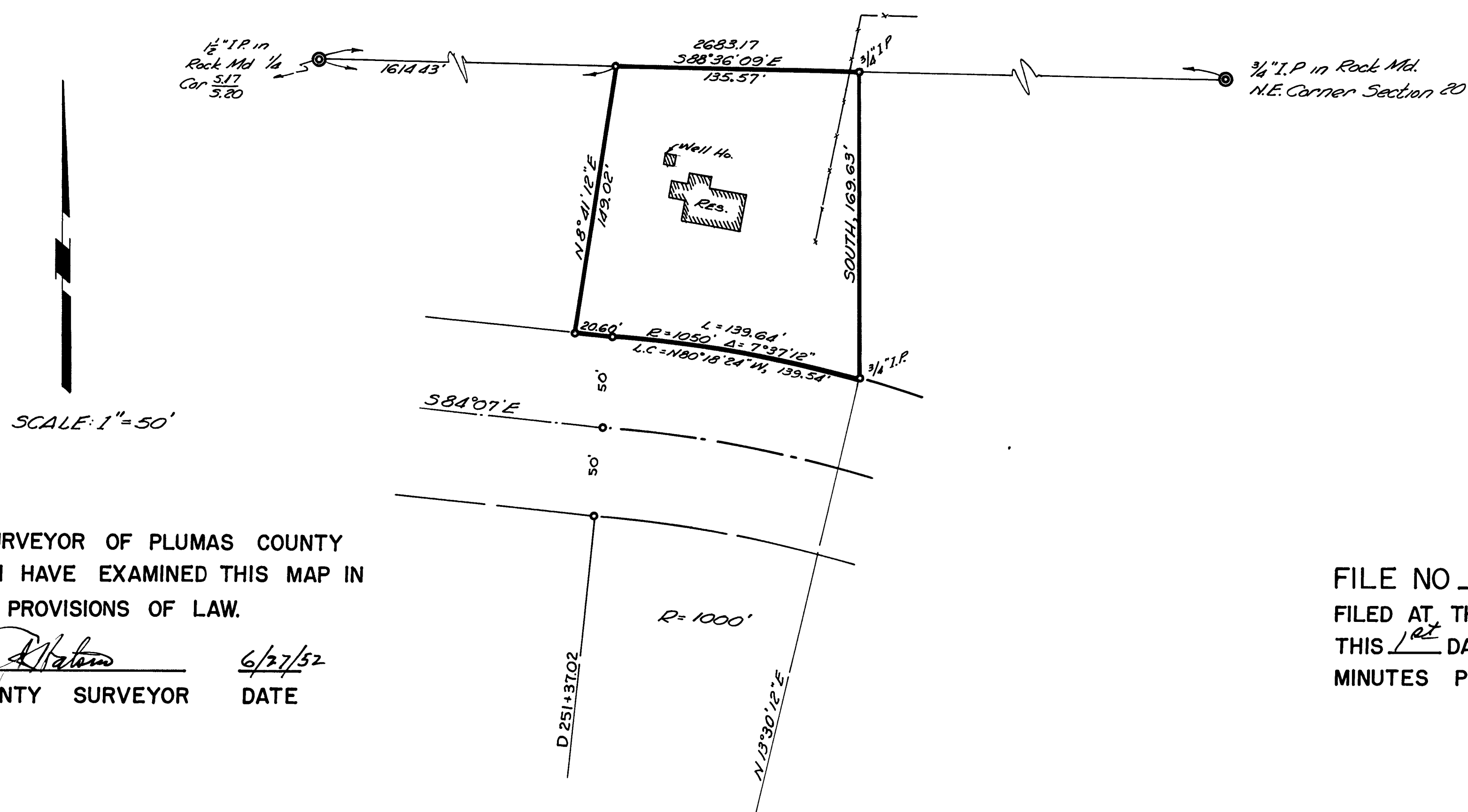
SURVEYED AT THE REQUEST OF ARTHUR BATY

JUNE, 1952

SURVEYED BY RICHARD R. ECKER, L.S. 2587

BASIS OF BEARINGS DERIVED FROM THE MONUMENTED
STATE HIGHWAY RIGHT OF WAY

Richard R. Ecker



I, A.J. WATSON, COUNTY SURVEYOR OF PLUMAS COUNTY
HEREBY CERTIFY THAT I HAVE EXAMINED THIS MAP IN
ACCORDANCE WITH THE PROVISIONS OF LAW.

A.J. Watson 6/27/52
COUNTY SURVEYOR DATE

FILE NO 7
FILED AT THE REQUEST OF R.R. ECKER
THIS 1st DAY OF July, 1952 AT 56
MINUTES PAST 8 O'CLOCK A.M.

W. E. Hogan
COUNTY RECORDER