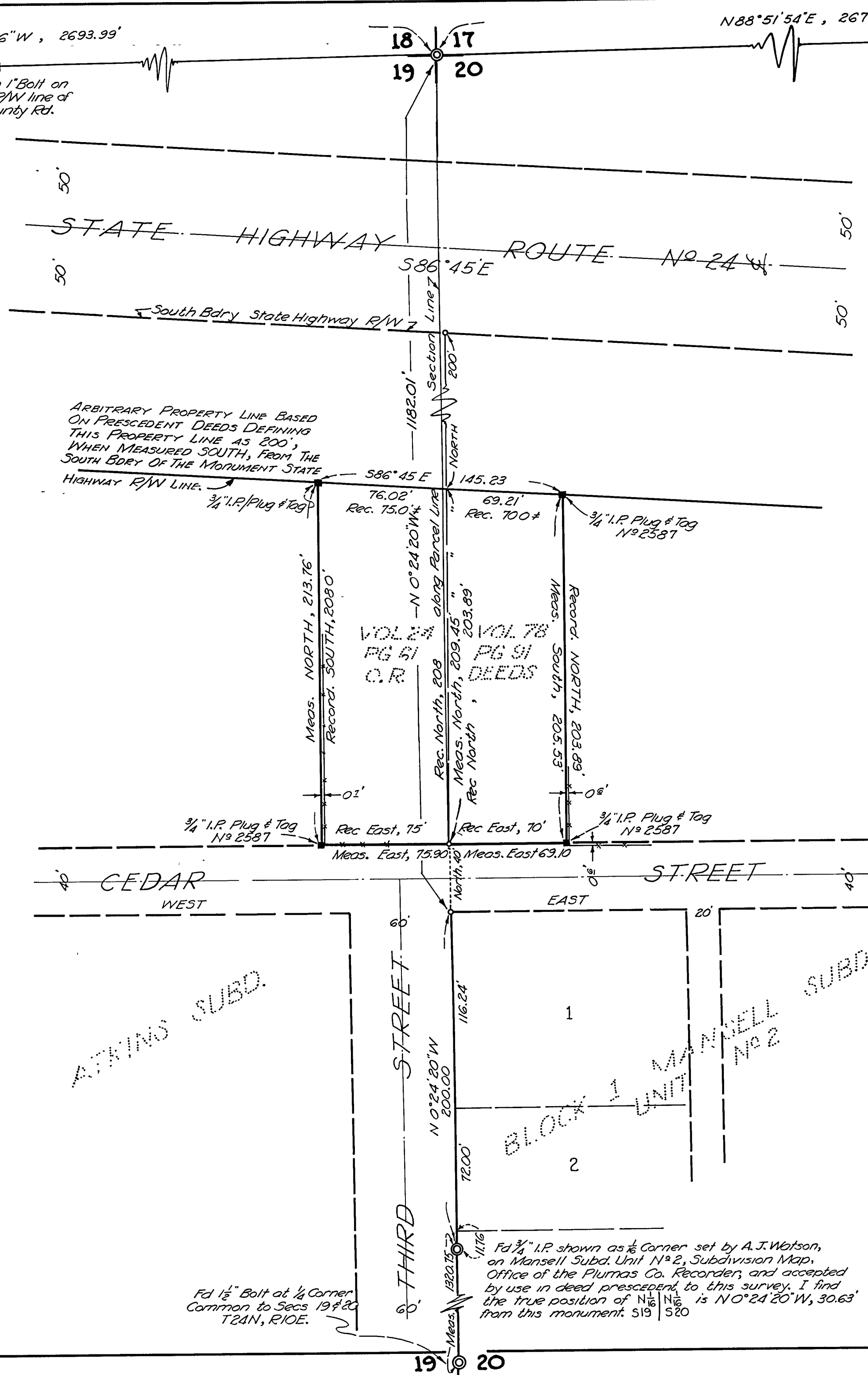
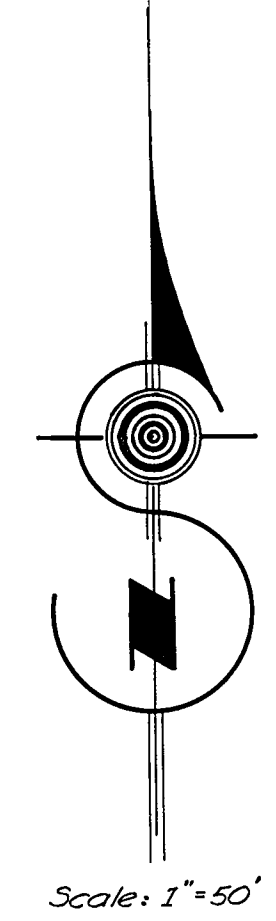


1/4 COR. See Record of Survey File No 995 Map Book Office of Plumas Co. Recorder.



1/4 CORNER. Wood post in rock mound. I reset 1 1/2" I.P. with plug & Tag # 2587. I mark 10" Pine N 23° W, 7° 8" Pine S 8° E, 15°

ARBITRARY PROPERTY LINE BASED ON PRECEDENT DEEDS DEFINING THIS PROPERTY LINE AS 200' WHEN MEASURED SOUTH, FROM THE SOUTH BDRY OF THE MONUMENT STATE HIGHWAY R/W LINE.

PLUMAS COUNTY CALIFORNIA

RECORD OF SURVEY

Of a portion of the NE 1/4 of the NE 1/4, Section 19 & a portion of the NW 1/4 of the NW 1/4, Section 20 all situated in T24N, R10E, M.D.M.

Surveyed at the request of Alvin H. Buus

by Richard R. Ecker, Licensed Surveyor No 2587

Richard R. Ecker

Approved after examination and comparing with data of record.

Whitson 11/22/49
COUNTY SURVEYOR

Basis of bearings is established from record bearing of the State Highway hereon shown and defined by monuments on the R/W lines.

File No 1112

Filed at the request of Richard R. Ecker this 22 day of November 1949 at 30 minutes past 4 o'clock P.M.

John E. Hogan
COUNTY RECORDER.
Ray Ely Crowee - Deputy

Fd 1/2" Bolt at 1/4 Corner Common to Secs 19 & 20 T24N, R10E.

Fd 3/4" I.P. shown as 1/8 Corner set by A.J. Watson, on Mansell Subd. Unit N 2, Subdivision Map, Office of the Plumas Co. Recorder, and accepted by use in deed precedent to this survey. I find the true position of N 1/2 N 1/2 is N 0° 24' 20" W, 30.63' from this monument. S19 | S20