

2272

CERTIFICATE OF COUNTY RECORDER

Accepted For Record and Recorded in Book RECORD OF SURVEYS
Page 138 Of Plumas County Records
this 18 Day of April 1957

Neil Hogan
County Recorder County of Plumas
State of California

CERTIFICATE OF COUNTY SURVEYOR

I hereby Certify that this Map is
Mathematically Correct
Walter 4/1/57
County Surveyor, County of Plumas,
State of California.

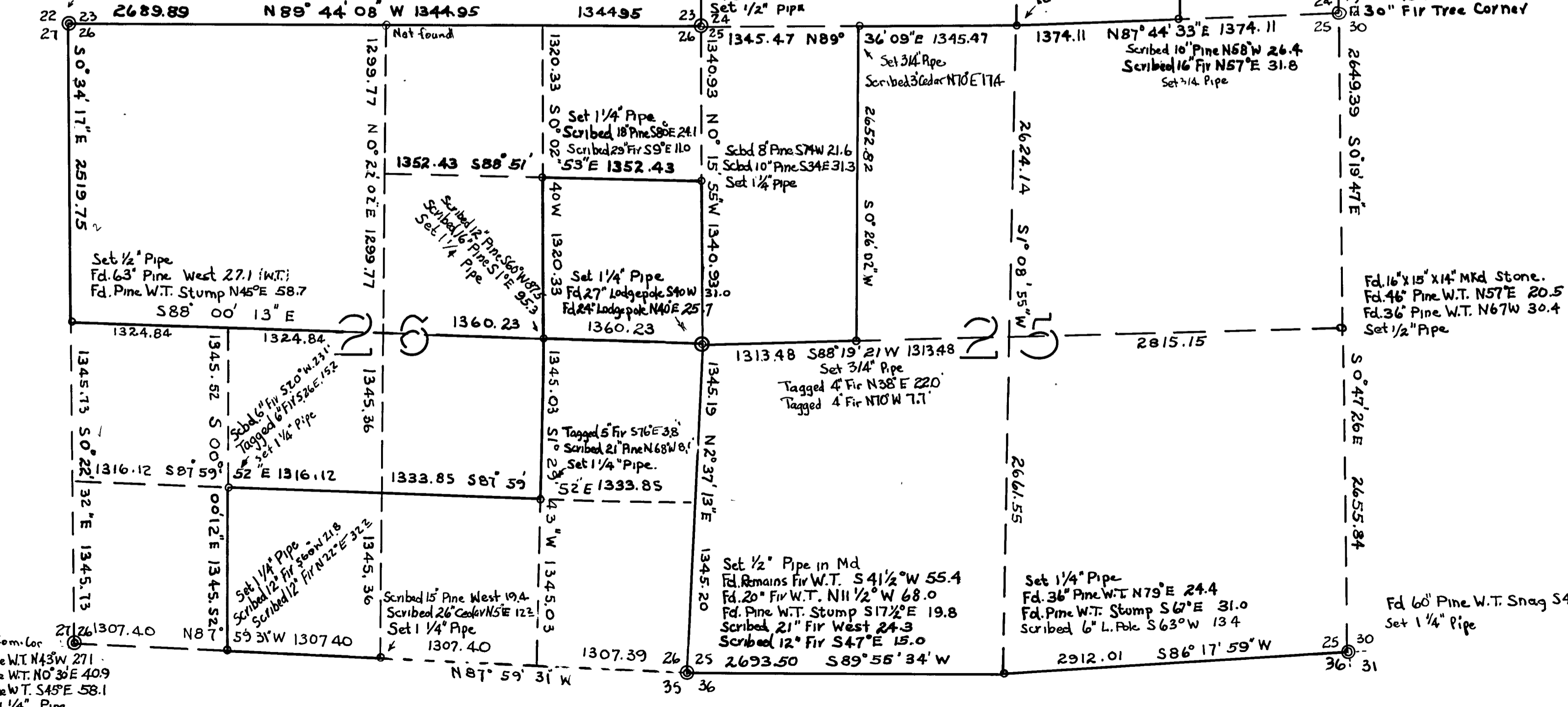
LEGEND

- ⊙ Shows Corners Found
 - Shows Corners Set and Tagged L.S. 2322
- Scale: 1 Inch = 800 Feet

T28N R6E MDB & M

Bearings are from State Hwy Tangent in Sec. 18 T28N R7E

Fd. 28" Fir W.T. S81°E 76.0
Tagged 6" Pine N82°E 20.7
Fd. Down Fir W.T. N68°E 44.9
Fd. 34" Pine W.T. N89½°W 47.5
Fd. MKd Stone. Set ¾" Pipe



Com. Cor
Fd. 46" Pine W.T. N43°W 271
Fd. 36" Pine W.T. N0°30'E 409
Fd. 48" Pine W.T. S45°E 58.1
Set 1 1/4" Pipe

Survey for:
WALTER W. WALKER, ETAL
IN SECTIONS 24, 25, 26, T28N, R6E,
MDB & M, PLUMAS COUNTY, CALIF.
Loren J. Sargent L.S. 2322
SHASTA FORESTS CO.
Feb - 1957

Loren J. Sargent