

Fd. steel rod in stone mound witnessed by U.S.F.S. marker tags. Orig. wit. trees gone. Accepted as 1/4 Sec. Corner.

West 2687.72' (G.L.O. Rec. 3990 Ch) 1343.86'

Set 1" dia. iron pipe tagged "R.E.7567" in stone mound for 1/16 Sec. Cor.

Found stone mound at Sec. Cor. with orig. witness trees. Set I.P. tagged "R.E.7567"

We, GEORGE F. BENTON and RUTH O. BENTON, as owners of the land included within the BIG MEADOWS HOMESITES UNIT NO. 1 Subdivision as shown on this map, do hereby certify that we are the only persons whose consent is necessary to pass clear title to said land, and we consent to the preparation and recordation of said maps shown within the colored border lines.

The streets shown hereon are not offered for dedication.

George F. Benton  
GEORGE F. BENTON

Ruth O. Benton  
RUTH O. BENTON

STATE OF CALIFORNIA )  
COUNTY OF PLUMAS ) S.S.

On this 2 day of July, 1957, before me ROBERT L. MURRAY, a Notary Public in and for the County of Plumas, personally appeared GEORGE F. BENTON and RUTH O. BENTON, known to me to be those persons whose names are subscribed to the foregoing certificate and acknowledged to me that they executed the same.

Robert L. Murray  
Notary Public My Commission expires 9/10/57

I, A. J. VANDENBERG, hereby certify that I am a Registered Civil Engineer of the State of California, that this map of BIG MEADOWS HOMESITES UNIT NO. 1 correctly represents a survey made by me in June 1957, that the survey is true and complete as shown; that the monuments indicated hereon actually exist and occupy the positions indicated and are sufficient to enable the survey to be retraced.

A. J. Vandenberg  
A. J. VANDENBERG, Reg. Civ. Engr. 7567

I, A. J. WATSON, County Surveyor of Plumas County, California, do hereby certify that I have examined this final map of BIG MEADOWS HOMESITES UNIT NO. 1; that it conforms substantially to the Tentative Map on file; that all of the applicable provisions of the Subdivision Map Act of the State of California and the Plumas County Subdivision Ordinances No. 319 and No. 369 have been complied with, and, I am satisfied the map is technically correct.

A. J. Watson 7/2/57  
A. J. WATSON, Civil Engineer Reg. No. 2554  
County Surveyor of Plumas County

I, the undersigned, TAX COLLECTOR of the COUNTY OF PLUMAS, California, do hereby certify that there are no tax liens against BIG MEADOWS HOMESITES UNIT NO. 1 as herein set forth, or unpaid State, County, Municipal, or Local taxes, or special assessments collected as taxes, except taxes or assessments not yet payable. Taxes or assessments which are a lien but not yet payable, I estimate to be in the amount of \$200.00.

Paula Ward  
Tax Collector of Plumas County

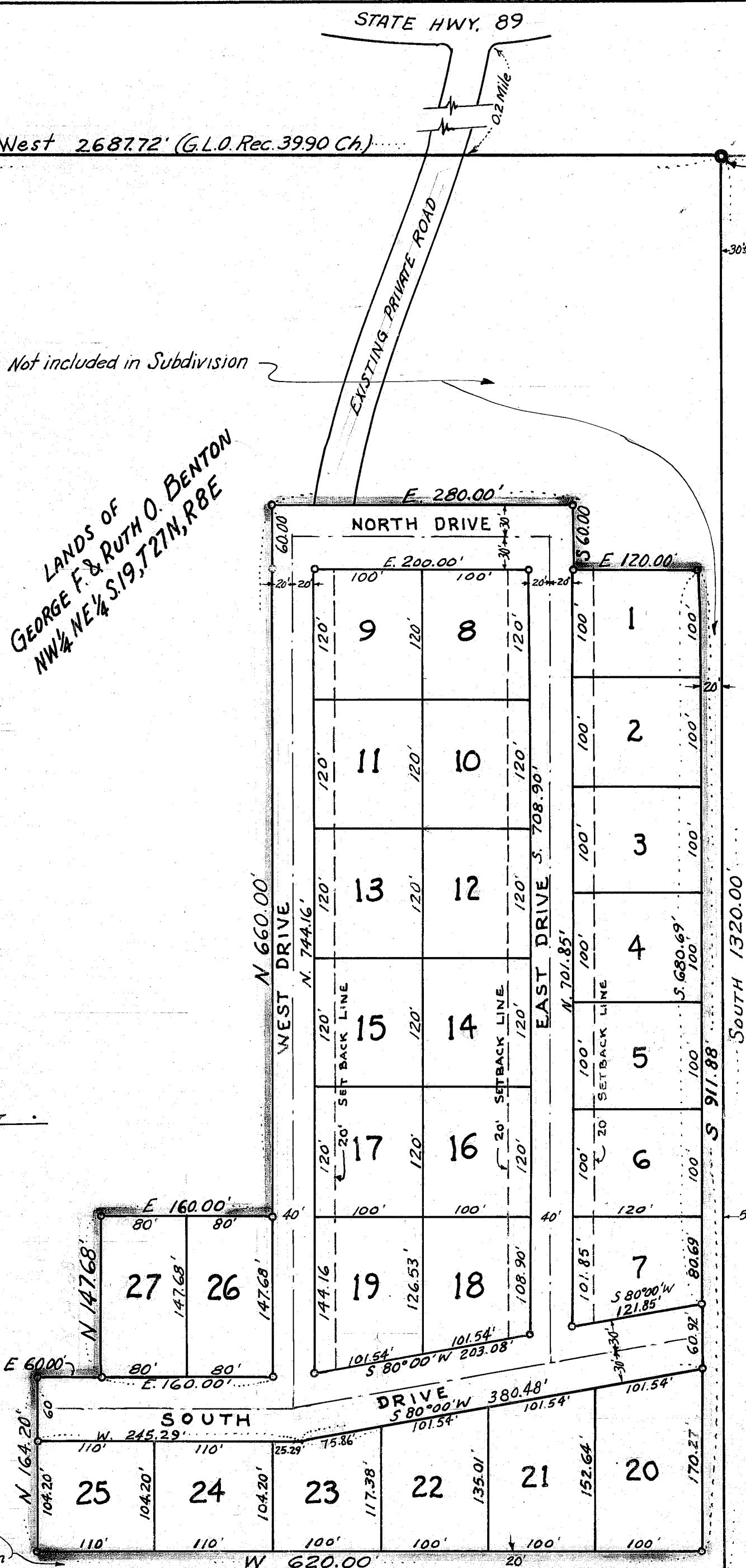
I, the undersigned, CLERK of the PLUMAS COUNTY BOARD OF SUPERVISORS, do hereby certify that on the 9th day of July, 1957, the PLUMAS COUNTY BOARD OF SUPERVISORS officially approved the subdivision map of BIG MEADOWS HOMESITES UNIT NO. 1. The receipt of satisfactory security in the Tax Collectors estimated amount of \$200.00 to insure payment of taxes which are a lien but not yet payable was acknowledged.

Lois Lehner  
Clerk of Board of Supervisors  
County Clerk of Plumas County

FILED FOR RECORD this 9th day of July, 1957, at 59 minutes past 1 o'clock, P.M.

Ida E. Hogan  
IDA E. HOGAN  
County Recorder of Plumas County

FILE No. 216 Fee: \$5.00



LANDS OF  
GEORGE F. & RUTH O. BENTON  
NW 1/4, NE 1/4, S. 19, T. 27 N, R. 8 E

Not in Subdivision

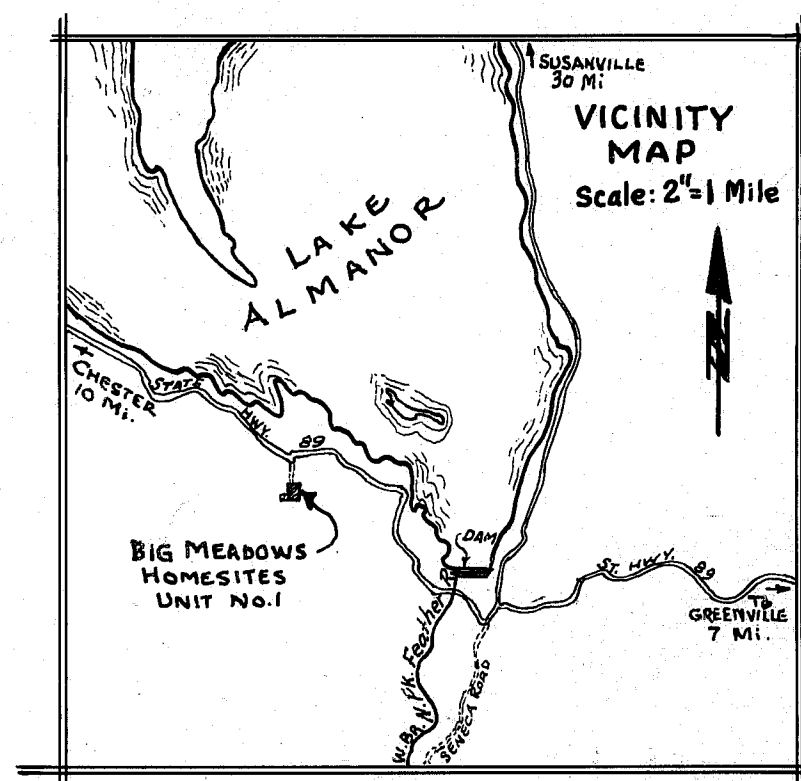
1/16 Sec. Cor. based on a rectangular section subdivision and 1320.00' length of East property line. This point was not established as the true 1/16 section corner.

LEGEND

- Set Iron Pipe tagged "R.E.7567"
- Set 3/8" dia. Iron Rod tagged "R.E.7567" at all Lot Corners not otherwise mon. with pipe.

SCALE: 1" = 100'

BASIS OF BEARINGS for this Map is the bearing of West as given for the N. line of the NE 1/4 Sec. 19.



BIG MEADOWS HOMESITES UNIT NO. 1

LOCATED IN THE NW 1/4, NE 1/4, SEC. 19, T. 27 N, R. 8 E., M.D.B. & M. PLUMAS COUNTY, CALIF.

GEORGE F. BENTON --- Subdivider  
ALMANOR POST OFFICE, CALIF.

SCALE: 1 INCH = 100 FEET JULY 1957

A. J. VANDENBERG - Reg. Civil Engr. 7567  
SUSANVILLE, CALIF.

Sheet No. 1 of 1

1M76