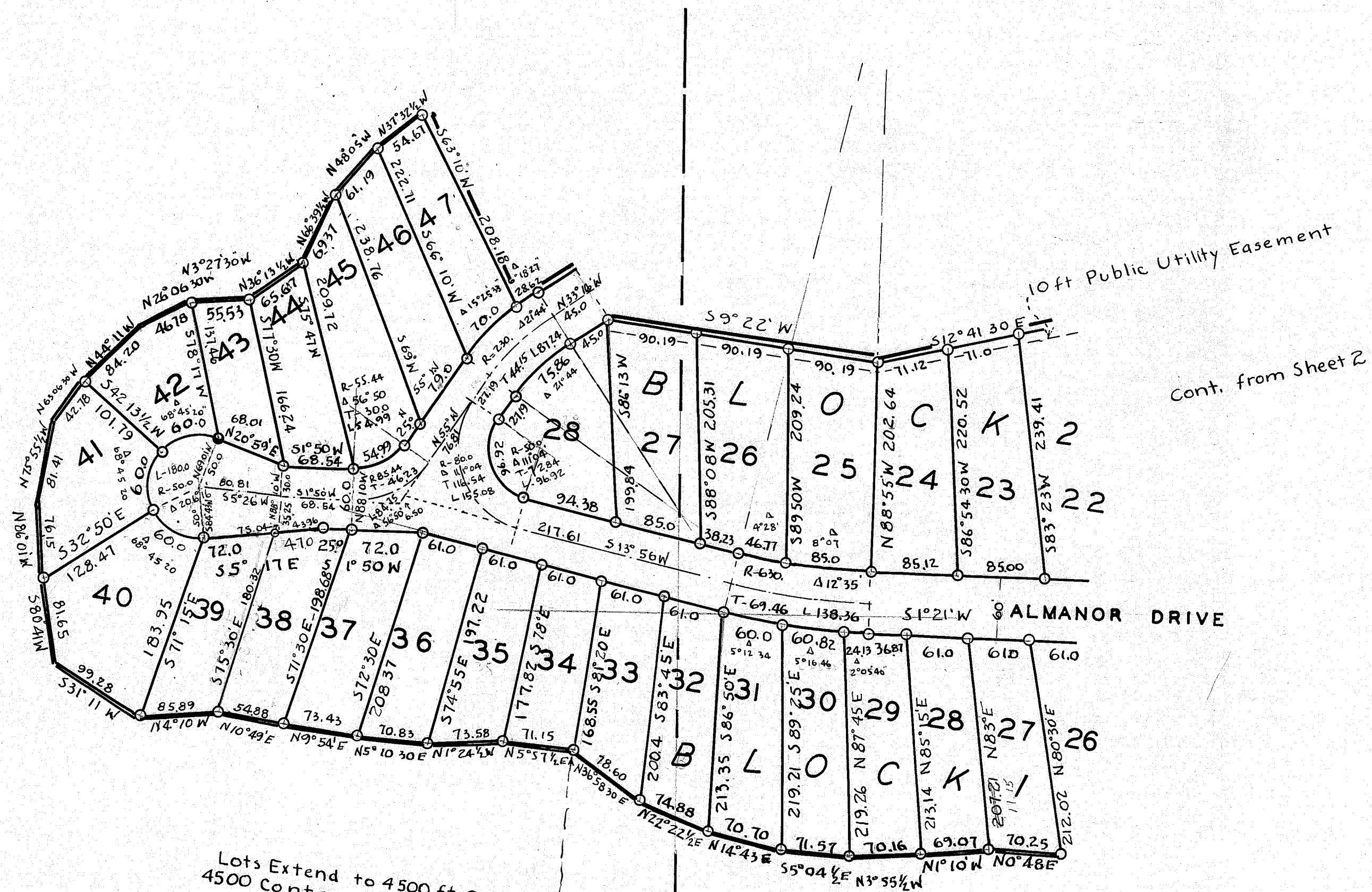


LAKE ALMANOR COUNTRY CLUB UNIT NO. 3

EDWARD A CLIFFORD OWNER AND SUBDIVIDER



Cont. from Sheet 2

Lots Extend to 4500 ft Contour
4500 Contour Marked With 1/2" Rods

P.G. & E. Datum
Set by P.G. & E.
Approx.
East 1/16 NE 1/4 Sec 36
T28N R7E M.D.M.

Bearings are from Unit No 2 Adjacent

O - Shows Iron Pipe Set & Tagged LS 2322
Scale 1 inch = 100 feet

LAKE

ALMANOR

Loren J. Sargent LS 2322

Loren J. Sargent