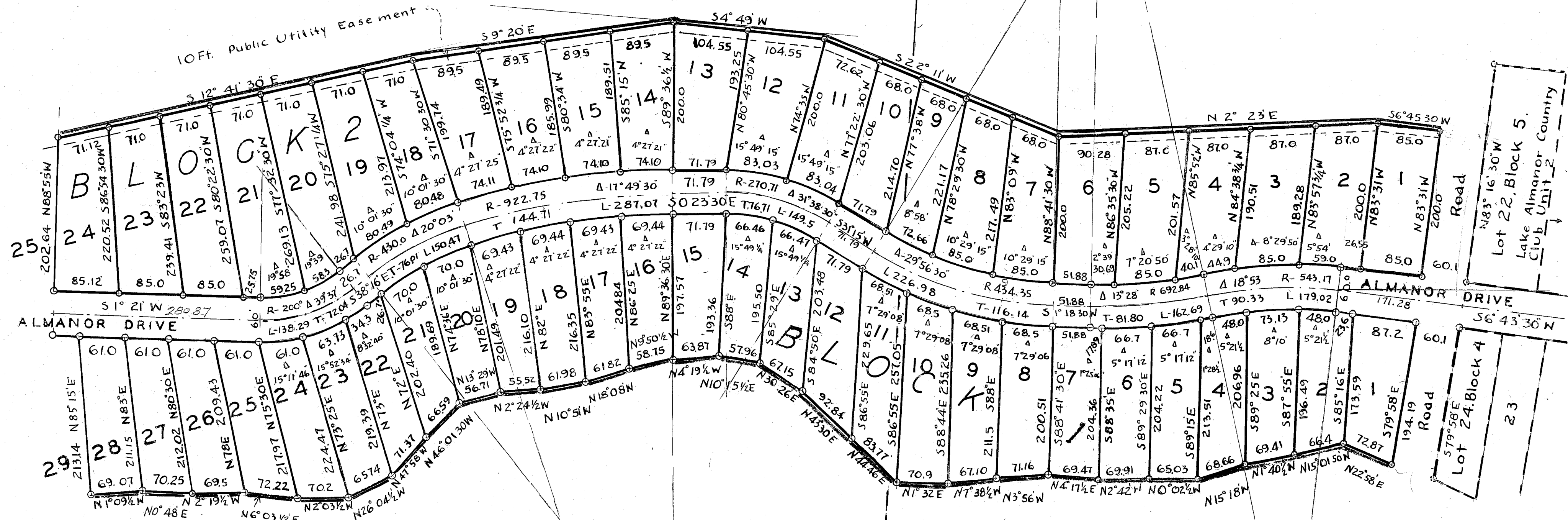


LAKE ALMANOR COUNTRY CLUB UNIT NO.3

EDWARD A. CLIFFORD OWNER AND SUBDIVIDER

Not a Part of Subdivision



Lots Extend to 4500' Contour PG&E Datum
The 4500' Contour is Marked With 1/2" Rods Set by P.G&E

O Shows Iron Pipe Set and Tagged L.S. 2322
Scale - 1 inch = 100 feet

LAKE

ALMANOR

Loren J. Sargent L.S. 2322
Loren J. Sargent.

1M74