

PLUMAS COUNTY
DEPARTMENT OF PUBLIC WORKS
SOLID WASTE DIVISION

1834 EAST MAIN STREET • QUINCY, CA 95971 • (530) 283-6268

Robert A. Perreault, Jr., P.E., Director of Public Works

Heidi H. Putnam, Solid Waste Manager

NOTICE OF PUBLIC HEARING

**PROPOSED FEE INCREASE FOR DISPOSAL OF SOLID WASTE
AS OPERATED BY FRANCHISE CONTRACTOR “FEATHER RIVER DISPOSAL”
(A DIVISION OF USA WASTE CALIFORNIA, INC., A DELAWARE CORPORATION)
FOR RESIDENTIAL AND COMMERCIAL CUSTOMERS
UNDER CONTRACT, i.e., SUBSCRIPTION, FOR CURBSIDE PICKUP**

A fee increase is being proposed in accordance with Plumas County Code “Sec. 6-10.208 - Fee schedule for collection, transfer, and related services” (i.e., Section 6-10.208 of Article 2 of Chapter 10 of Title 6 of the Plumas County Code) and in accordance with “Article 12.04, Refuse Rate Index – Adjustment to the Rates,” as set forth in the Solid Waste Franchise Contract, dated March 31, 2017, between Plumas County and Feather River Disposal. Said proposed fee increase has been calculated as a culmination of the 2020 “Refuse Rate Index” (“RRI”), (prepared from Calendar Year 2019 Financial Statements) in the amount of 3.30% for residential curbside solid waste pickup and 3.30% for commercial curbside solid waste pickup. Said proposed fee increase in the amount of 3.30% for residential curbside solid waste pickup and 3.30% for commercial curbside solid waste pickup is proposed by the Plumas County Franchise Contract Administrator (Director of Public Works).

Pursuant to this Notice, the Plumas County Board of Supervisors will conduct a Public Hearing, on a proposed fee increase on June 16, 2020, beginning at 1:00 PM, in the Board of Supervisors Meeting Room, located in the Courthouse (Room 308) at 520 Main Street, Quincy, California.

Following the Public Hearing, the Board of Supervisors will immediately consider a replacement of current Resolution 19-8421 with a proposed revised Resolution to include the proposed fee increase of up to 3.30% for residential curbside solid waste pickup and 3.30% for commercial curbside solid waste pickup.

If adopted by the Board of Supervisors on June 16, 2020, the proposed new rates will become effective July 1, 2020.

The following additional information is pertinent:

- This Public Notice pertains only to Franchise Service Area 1, as depicted in Attachment B-1 (follow link to view: <https://ca-plumascounty2.civicplus.com/2616/17509/Public-Documents>) to the above mentioned Franchise Contract. The Franchise Contractor for Franchise Service Area 1 is Feather River Disposal, with headquarters located at 1166 Industrial Way, Quincy, CA 95971.

- This proposed fee increase is applicable only to residential and commercial customers under contract, i.e., subscription, for curbside pickup by the Franchise Contractor. A copy of the proposed revised fee schedule is enclosed.
- The proposed rate change is necessary because the Franchise Agreement provides for an “Operating Ratio” (net operating costs divided by the contractor’s net income should be in a range of 88.00% to 92.00%. However, based on audited financial statements provided by the Franchise Operator, the costs of operation have risen since the rates were last adjusted such that the operating ratio no longer falls within that targeted range.
- The data upon which the proposed rates are based consisting of the audited financial statements referred to above, and the calculation of the rate adjustment (the Refuse Rate Index reports) are available for inspection at 1834 E Main Street, Quincy, CA 95971 between the hours of 8am – 5pm, Monday through Friday, or may be viewed on the Plumas County website at: <https://ca-plumascounty2.civicplus.com/2616/17509/Public-Documents>
- RATE INCREASE PROCEDURE

The process of raising rates is controlled by the provisions of the California Constitution, Article XIII D, Section 6, Subdivisions (a) and (c), enacted by Proposition 218 in 1996. In summary, the process of raising rates is as follows:

The proposed fee increase has been calculated as a culmination of the 2020 “Refuse Rate Index” (“RRI”) (prepared from Calendar Year 2019 Audited Financial Statements), in the amount of 3.30% for residential curbside solid waste pickup and 3.30% for commercial curbside solid waste pickup. The rate increase is applicable to FRD residential and commercial customers under contract, i.e., subscription, for curbside pickup. (Please see the enclosed map – Service Area 1)

The Board of Supervisors will conduct a Public hearing on June 16, 2020, to receive written protests and consider adopting a new fee schedule. If a majority protest does not occur, the Board may vote to adopt the new rate schedule at the June 16, 2020, Public Hearing.

- RATE PROTEST PROCEDURE

Subscription customers within Franchise Service Area 1 wishing to protest the proposed fee increase must do so in writing. Letters may be mailed to the Plumas County Department of Public Works office at: 1834 East Main Street, Quincy, CA 95971 or written protests may be submitted in person at the June 16, 2020 Public Hearing. All written protests must be received prior to the start of the Public Hearing.

All protests must include the following minimum information:

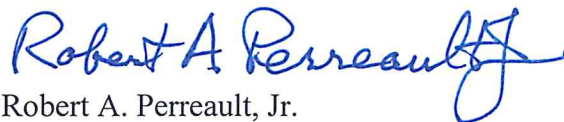
- The curbside subscription customer's signature and date;
- The curbside subscription customer's name printed or typed under the signature;
- The address or assessor parcel number of the property with curbside service;
- A written statement that the author of the protest letter is the subscription customer of the property with curbside service;
- A written statement that the letter constitutes a protest to the proposed fee increase.

If the County receives written protests from a majority of curbside subscription customers within Franchise Area 1, it cannot adopt the proposed fees.

In the event that a majority protest does not occur, following the Public Hearing, the Board of Supervisors may vote to adopt the new fee schedule.

Adoption of a new fee schedule may not occur at the June 16, 2020, Public Hearing if time is needed to verify and count letters of protest.

- This Public Notice is not applicable to customers for residential and commercial customers that self-haul to Plumas County Transfer Stations located in Chester, Greenville, La Porte and Quincy. A separate published notification process and public hearing will be provided by the County for customers that self-haul to Transfer Stations.



Robert A. Perreault, Jr.
Director of Public Works, and
Franchise Contract Administrator
Plumas County

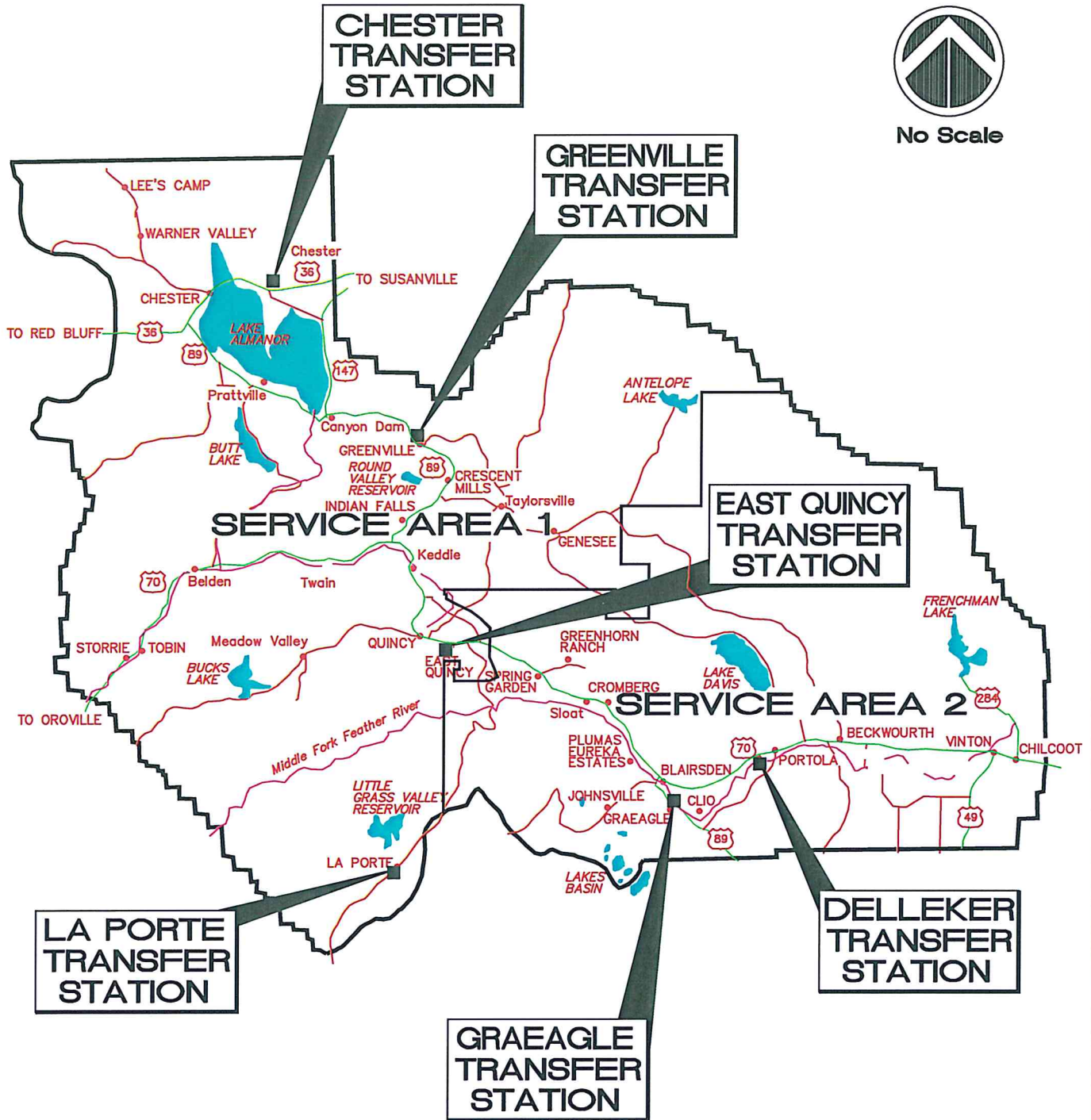
Date: APRIL 24, 2020

ATTACHMENT B-1

NORTH



No Scale



PLUMAS COUNTY MAP SHOWING SOLID WASTE FRANCHISE SERVICE AREAS AND CURRENT TRANSFER STATIONS

May, 2012

PLUMAS CO. DPW

TABLE 1 -FEATHER RIVER DISPOSAL: FEE SCHEDULE FOR COLLECTION, TRANSFER AND RELATED SOLID WASTE SERVICES

Comparison of Rates:

(1) Current Rate as of August 2019

(2) R3 Consulting Group Recommended 2019 Refuse Rate Index Adjustment of 3.30%*

Description of Service	Current Rates	Adjusted Rate
	All	Proposed Residential Rate 2020
Residential Base Rate		
One can per week	\$21.18	\$21.88
Two cans per week	\$29.46	\$30.43
Three cans per week		
64-gallon waste wheeler	\$28.96	\$29.92
100-gallon waste wheeler	\$37.54	\$38.78
Residential Large Items		
Washer, dryer, standard fridge, single mattress	\$20.75	\$21.43
Deep freezer, double mattress	\$41.31	\$42.67
Tire - 16" or less	\$4.57	\$4.72
Tire - 16.1" to 20"	\$8.83	\$9.12
Tire - 20" or more	\$20.75	\$21.43
Residential Account Start-up Fee	\$8.83	\$9.12
Commercial Base Rate		
One cubic yard bin (one per week)	\$82.63	\$85.36
One cubic yard bin (twice per week)	\$165.01	\$170.46
One cubic yard bin (three per week)	\$248.04	\$256.23
One cubic yard bin (four per week)	\$330.78	\$341.70
One cubic yard bin (five per week)	\$413.52	\$427.17
Each additional CY per collection	\$22.21	\$22.94
One can per week	\$25.39	\$26.23
Two cans per week	\$31.21	\$32.24
Three cans per week	\$36.93	\$38.15
Four cans per week	\$42.76	\$44.17
64-gallon waste wheeler	\$31.21	\$32.24
100-gallon waste wheeler	\$42.76	\$44.17
Special Travel Charge (per hour)	\$89.49	\$92.44
Bin delivery charge (per bin)	\$55.10	\$56.92
Transfers Station Unload Fees		
Two cans or standard containers	\$8.50	\$8.78
Three cans or standard containers	\$13.49	\$13.94
Four cans or standard containers	\$17.71	\$18.29
Station Wagon	\$18.37	\$18.98
Compact Truck	\$22.82	\$23.57

EXHIBIT A

TABLE 1 -FEATHER RIVER DISPOSAL: FEE SCHEDULE FOR COLLECTION, TRANSFER AND RELATED SOLID WASTE SERVICES

Comparison of Rates:

(1) Current Rate as of August 2019

(2) R3 Consulting Group Recommended 2019 Refuse Rate Index Adjustment of 3.30%*

Description of Service	Current Rates	Adjusted Rate
	All	Proposed Residential Rate 2020
Compact Truck with Side Boards	\$29.19	\$30.15
Standard Size Pickup Truck	\$27.88	\$28.80
Standard Size Pickup Truck with Side Boards	\$34.88	\$36.03
Larger Trucks (per CY)	\$19.68	\$20.33
Transfer Station - Large and Restricted Items		
Washer, dryer, standard fridge, single mattress	\$15.81	\$16.33
Deep freezer, double mattress	\$28.59	\$29.53
Tire - 16" or less	\$3.51	\$3.63
Tire - 16.1" to 20"	\$7.07	\$7.30
Tire - 20" or more	\$15.69	\$16.21
Tree Stumps		
12 inches or less	\$22.82	\$23.57
13 inches to 24 inches	\$45.70	\$47.21
Greater than 24 inches	\$68.53	\$70.79
Cathode Ray Monitor or TV	\$3.75	\$3.87
Compacted Loads (per ton)	\$91.55	\$94.57