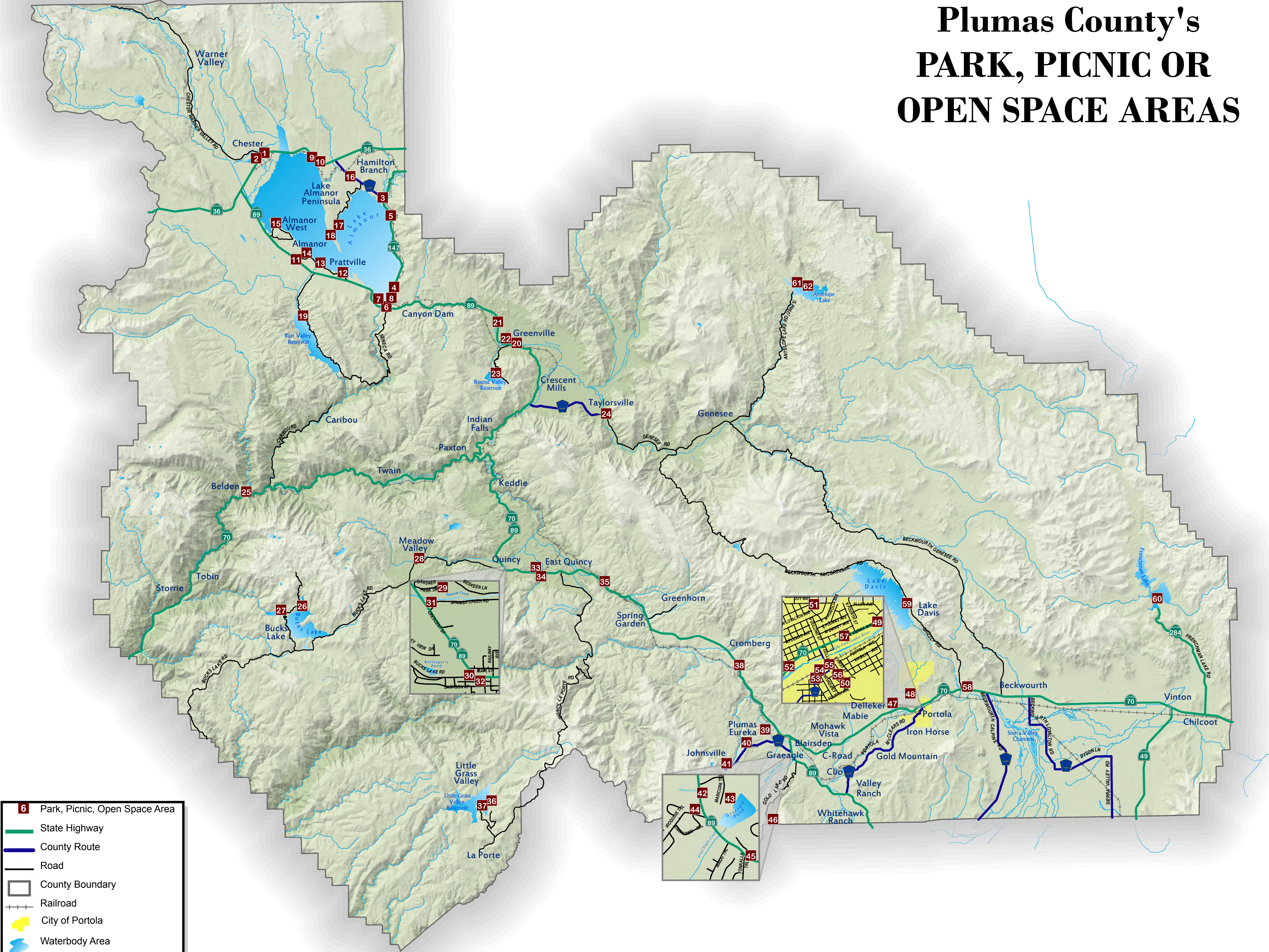




Plumas County's PARK, PICNIC OR OPEN SPACE AREAS



Map Reference Table			
MAP ID#	NAME	TYPE	LOCATION
1	Chester Park	Park	Chester
2	Chester Ballpark	Ballpark	Chester
3	Hamilton Branch Public Fishing Access	Picnic	Hamilton Branch
4	Eastshore Picnic Area	Picnic	East Shore
5	Westwood Public Beach	Picnic	East Shore
6	Canyon Dam Picnic Area	Picnic	Canyon Dam
7	Canyon Dam Boat Launch/Picnic Area	Picnic	Canyon Dam
8	Almanor Scenic Overlook	Picnic	Canyon Dam
9	Gould Swamp Picnic Area	Picnic	Lake Almanor
10	Lake Almanor Safety Rest Area	Rest Area	Lake Almanor
11	Almanor Rest Area	Rest Area	Lake Almanor
12	Dyer View Day Use Area	Picnic	Lake Almanor
13	Marvin K. Alexander Beach Day Use Area	Picnic	Lake Almanor
14	Lake Almanor Boat Launch Area	Picnic	Lake Almanor
15	Lake Almanor West (Private)	Park	Lake Almanor
16	Foxwood Community Park (Private)	Park	Lake Almanor
17	LACC Rec Area 1 (Private)	Park	Lake Almanor
18	LACC Rec Area 2 (Private)	Park	Lake Almanor
19	Ray Adams Boat Launch & Picnic Area	Picnic	Butt Valley Reservoir
20	Greenville Park	Park	Greenville
21	Greenville Campground Picnic Area	Picnic	Greenville
22	Greenville Little League Ballpark	Ballpark	Greenville
23	Round Valley Picnic Area	Picnic	Greenville
24	County Rodeo Grounds	Park	Taylorville
25	Eby Stamp Mill Rest Area	Rest Area	Canyon
26	Sandy Point Day Use	Picnic	Bucks Lake
27	BSA Camp Timberwolf (Private)	Picnic	Bucks Lake
28	Lowell Bader Park	Park	Meadow Valley
29	Gasner Park Picnic Area	Park	Quincy
30	Dame Shirley Plaza	Park	Quincy
31	Gansner Ballpark	Ballpark	Quincy
32	Courthouse Lawn	Picnic	Quincy
33	Pioneer Park	Park	East Quincy
34	Rotary Field Ballpark	Ballpark	East Quincy
35	Massack Roadside Rest Area	Rest Area	Massack
36	Blue Water Beach Picnic Area	Picnic	Little Grass Valley
37	Pancake Beach Picnic Area	Picnic	Little Grass Valley
38	Jackson Creek (USFS)	Picnic	Cromberg/Sloat
39	Plumas Pines Rec Center (Private)	Park	Plumas Eureka
40	Madora Lake Nature Walk Picnic Area	Picnic	Graeagle
41	Plumas-Eureka State Park Picnic Area	Picnic	Johnsville
42	Herb Rowe Park	Park	Graeagle
43	Graeagle Mill Pond	Picnic	Graeagle
44	Graeagle Picnic Grounds	Picnic	Graeagle
45	Graeagle Tennis Courts	Recreation	Graeagle
46	Frazier Falls Picnic Area	Picnic	Lake Basin Area
47	Unknown	Picnic	Delleker
48	Carmichael Elementary School	Open Area	Portola
49	Riverside Picnic Area (City of Portola)	Picnic	City of Portola
50	Portola City Park & George Demery Field	Park	City of Portola
51	Baldwin Park (City of Portola)	Park	City of Portola
52	West City Park (City of Portola)	Park	City of Portola
53	Bench Park (City of Portola)	Pocket	City of Portola
54	Caboose Park (City of Portola)	Pocket	City of Portola
55	Clock Park (City of Portola)	Pocket	City of Portola
56	Volleyball Park (City of Portola)	Pocket	City of Portola
57	Portola Visitor Center	Picnic	City of Portola
58	Davis Roadside Rest Area	Rest Area	Beckwourth
59	Coot Bay Fishing Access Picnic Area	Picnic	Lake Davis
60	Frenchman Lake Picnic Area	Picnic	Frenchman Lake
61	Antelope Picnic Area	Picnic	Antelope Lake
62	Lost Cove Picnic Area	Picnic	Antelope Lake



PLUMAS COUNTY GIS
555 Main Street
Quincy, CA 95971
(530) 283-7011
www.plumascounty.us



Plot Date: 7/19/2017
Mapper: Becky Osborn / Date: 7/19/2017
Map File Name: Parks_Map_7-18-17.mxd
Data Sources: Plumas County Framework Data
Projection: California State Plane, Zone 1, NAD 1983

0 2.5 5 10 Miles

**For reprints, mapping or additional information
please contact Plumas County GIS**

Disclaimer:
Although a great deal of effort was made by Plumas County GIS to gather the mapping elements presented in this document, it does not constitute a complete and accurate representation of actual physical elements on the ground. Reasonable efforts have been made by Plumas County GIS to verify that this map accurately interprets the source data used in its preparation, however, a degree of error is inherent in all maps, and this map may contain omissions and errors in scale, resolution, rectification, positional accuracy, development methodology, interpretation of source data, and other circumstances. As additional data becomes available to Plumas County GIS, and as verification of source data continues, this map may be reinterpreted or updated by Plumas County GIS. This map is date specific and is intended for use only at the published scale. This map is distributed "as-is" without warranty of any kind and has been created for graphical purposes only.